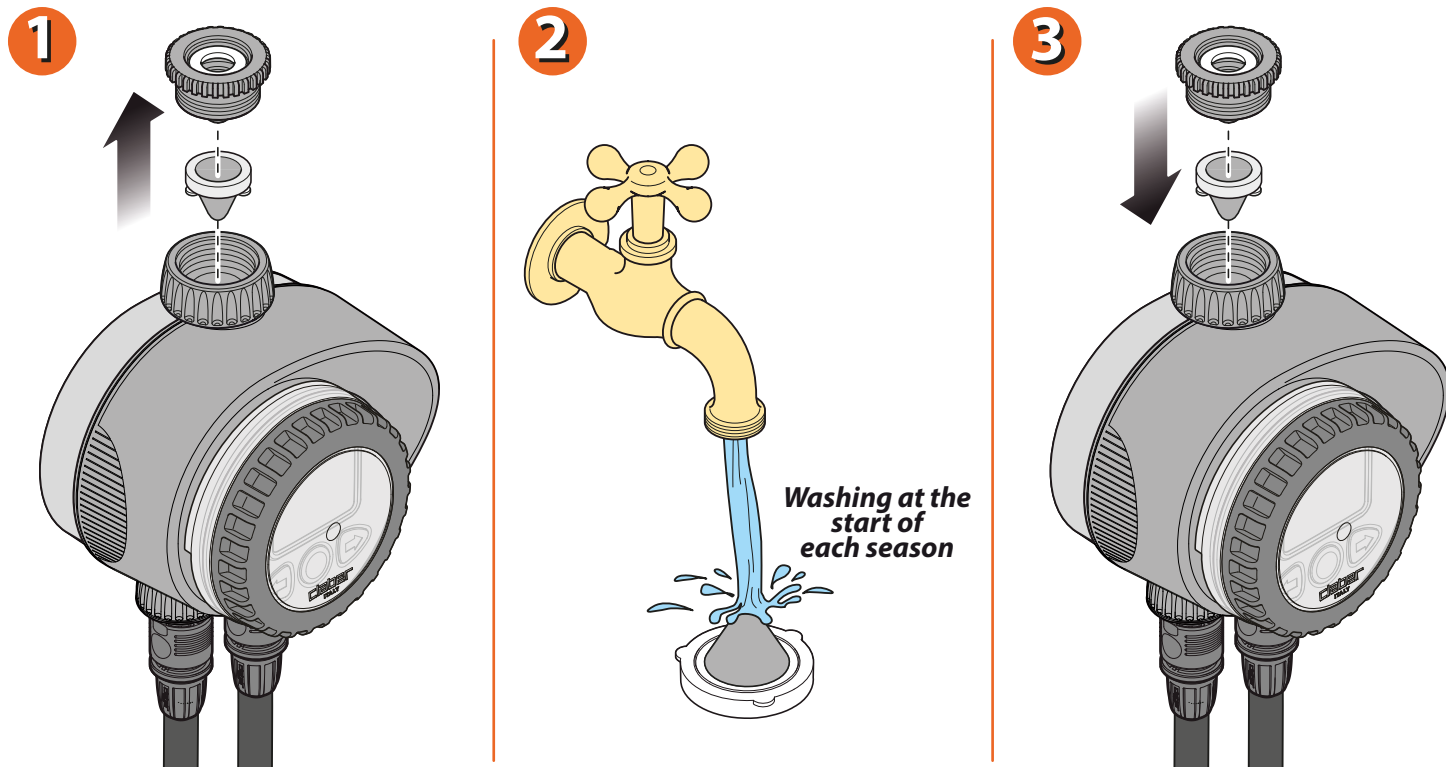


CLEANING THE FILTER. The timer is protected by a wire mesh filter that ensures long-lasting and trouble-free operation. The filter should be inspected periodically and washed at the start of each season. Simply remove the filter from the connector and rinse clean under running water.



For Duplo RF (code): 90832

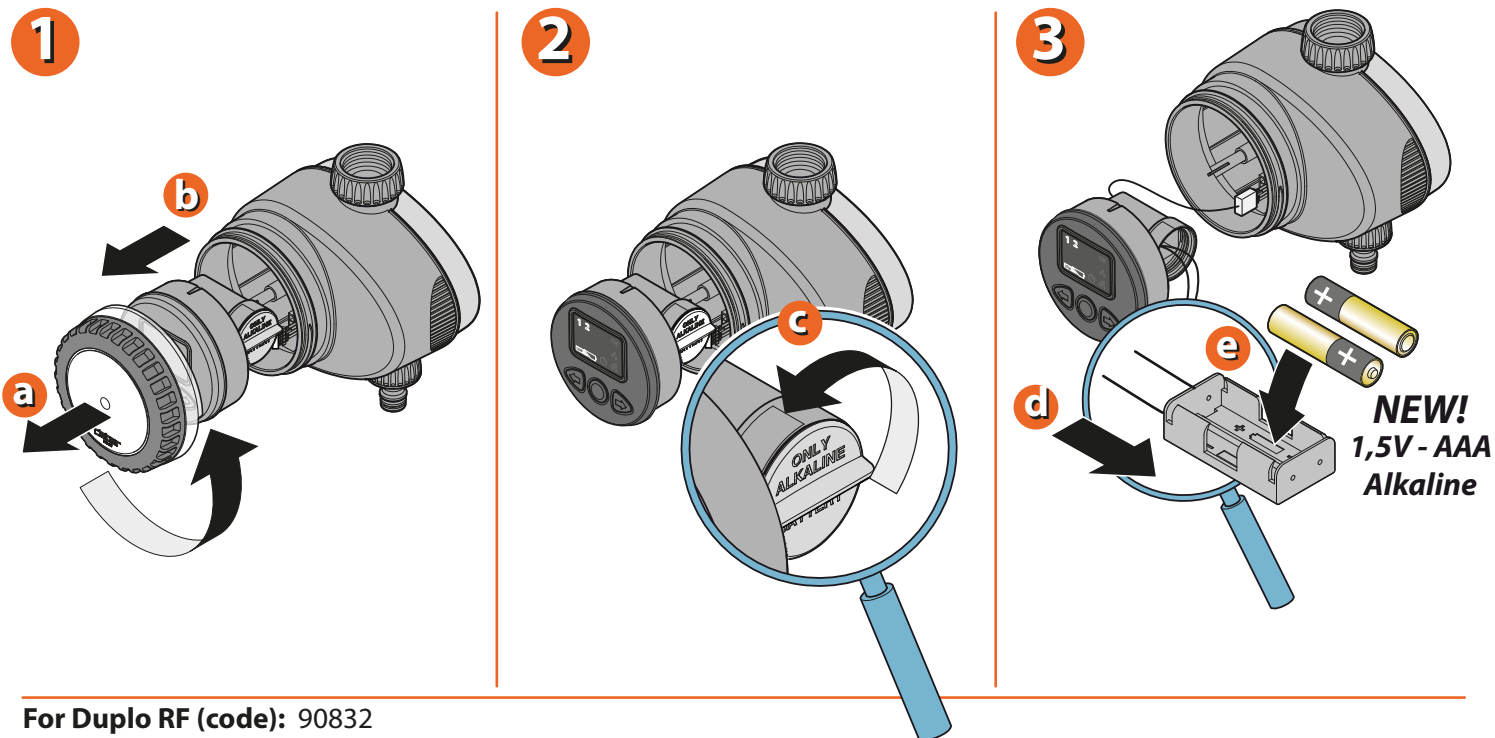
FITTING THE BATTERIES.

Unscrew the transparent cover and remove the control unit.

Unscrew the cap of the battery housing.

Draw the battery holder out of the housing.

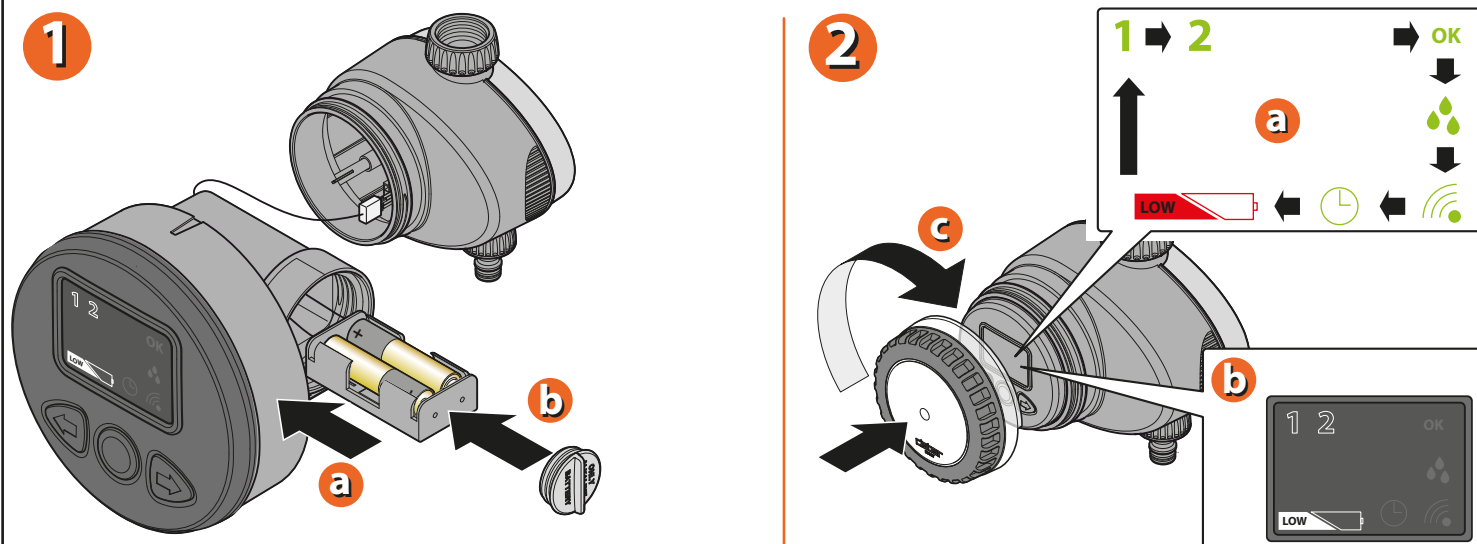
Remove flat batteries, if in place, and fit the new ones in the holder, observing the correct polarity.



For Duplo RF (code): 90832

Replace the battery holder in the housing; retighten the cap, checking that the seal is positioned correctly in its seat. Use only 2 new AAA 1.5 V alkaline batteries.

Once the batteries are fitted, an initialization routine will start (display Leds light up in sequence, valves close in sequence).
Warning: 30 seconds after having fitted the batteries or pressed any button, the Leds on the panel will go out. To refresh the display, press any button.



For Duplo RF (code): 90832

INSTALLATION

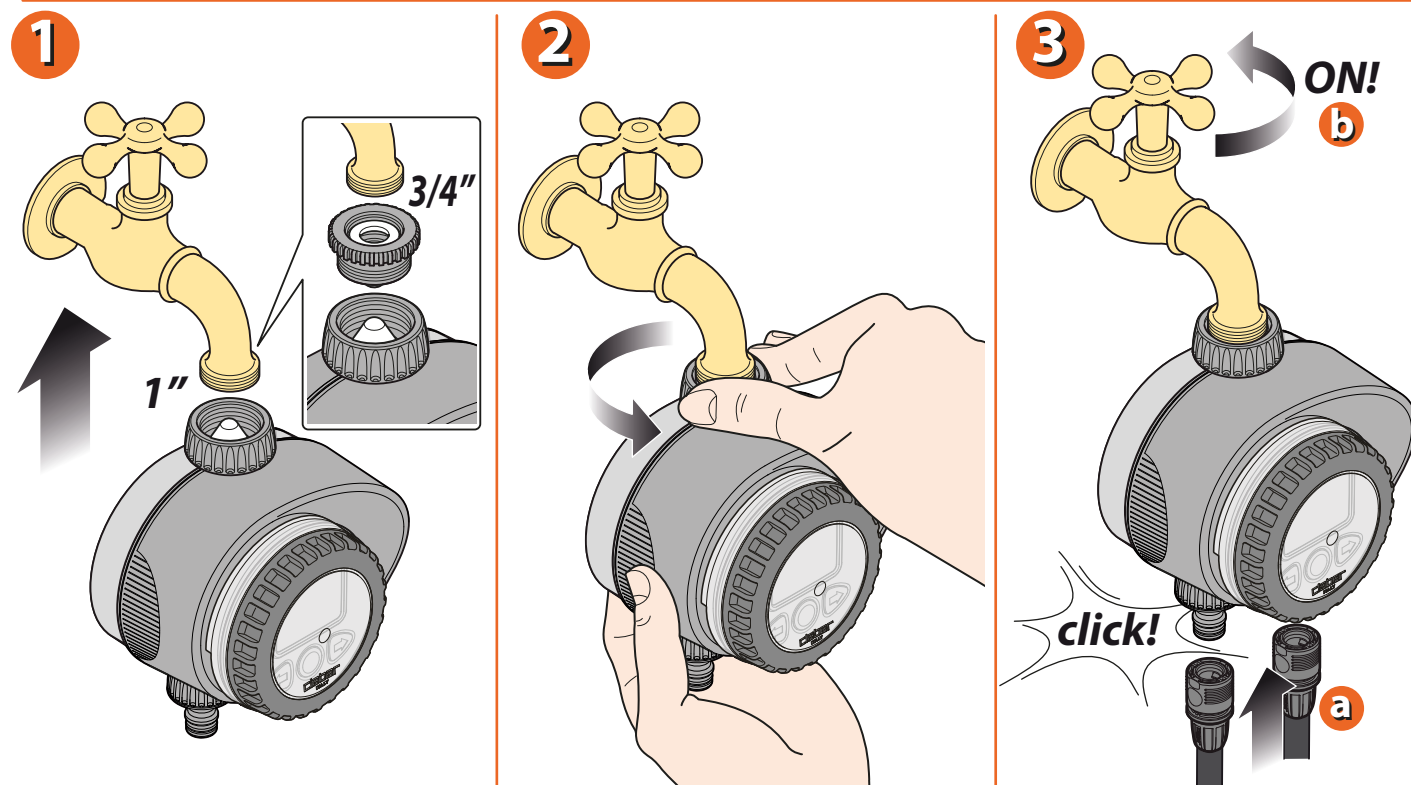
Fit the timer to a cold water tap, following these simple instructions.

The spout of the tap should have a 3/4" or 1" male thread (if not, use an adapter)

Screw the ring nut of the 3/4" or 1" female fitting onto the tap.






Caution: tighten the ring nut using hand pressure only. Do not use wrenches or other tools. Connect the watering lines to the respective quick-click or threaded fittings, using the appropriate connectors.

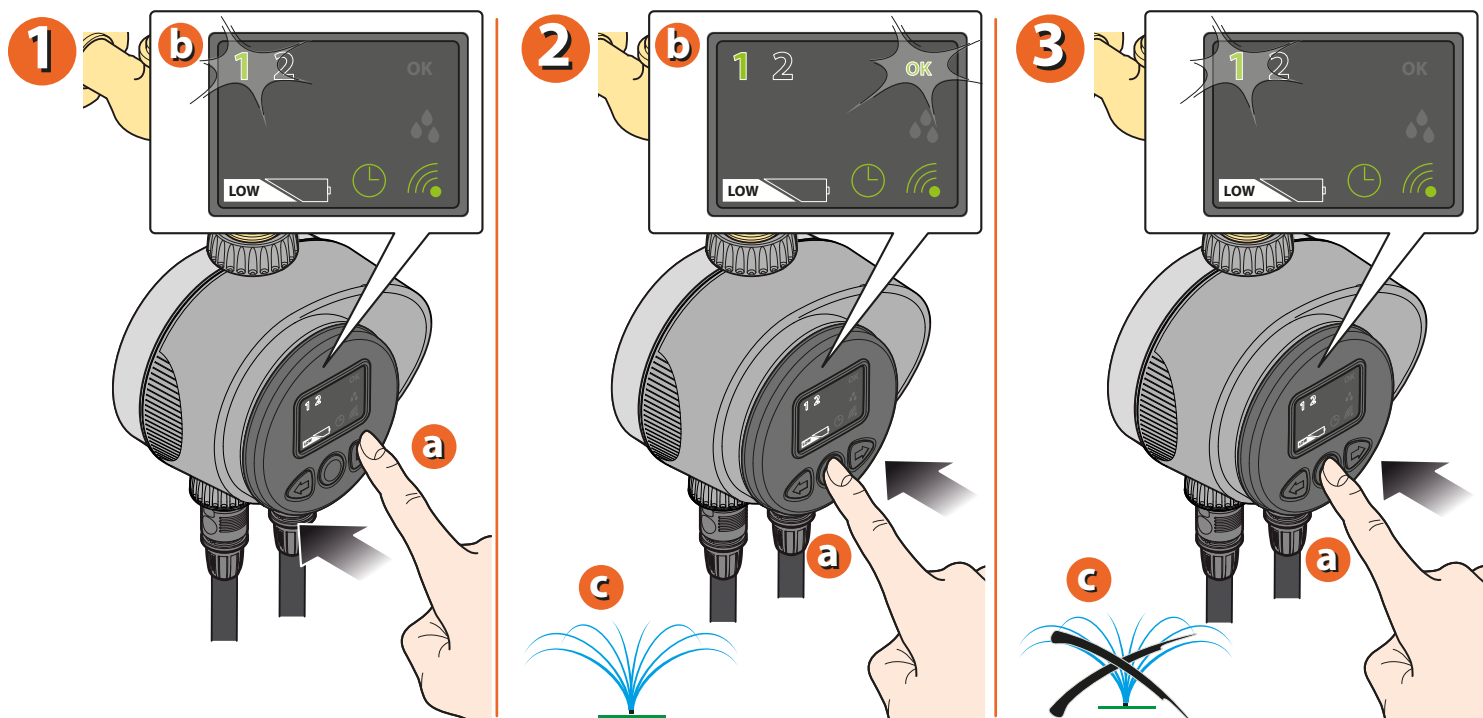
Remember to turn on the water tap!



For Duplo RF (code): 90832

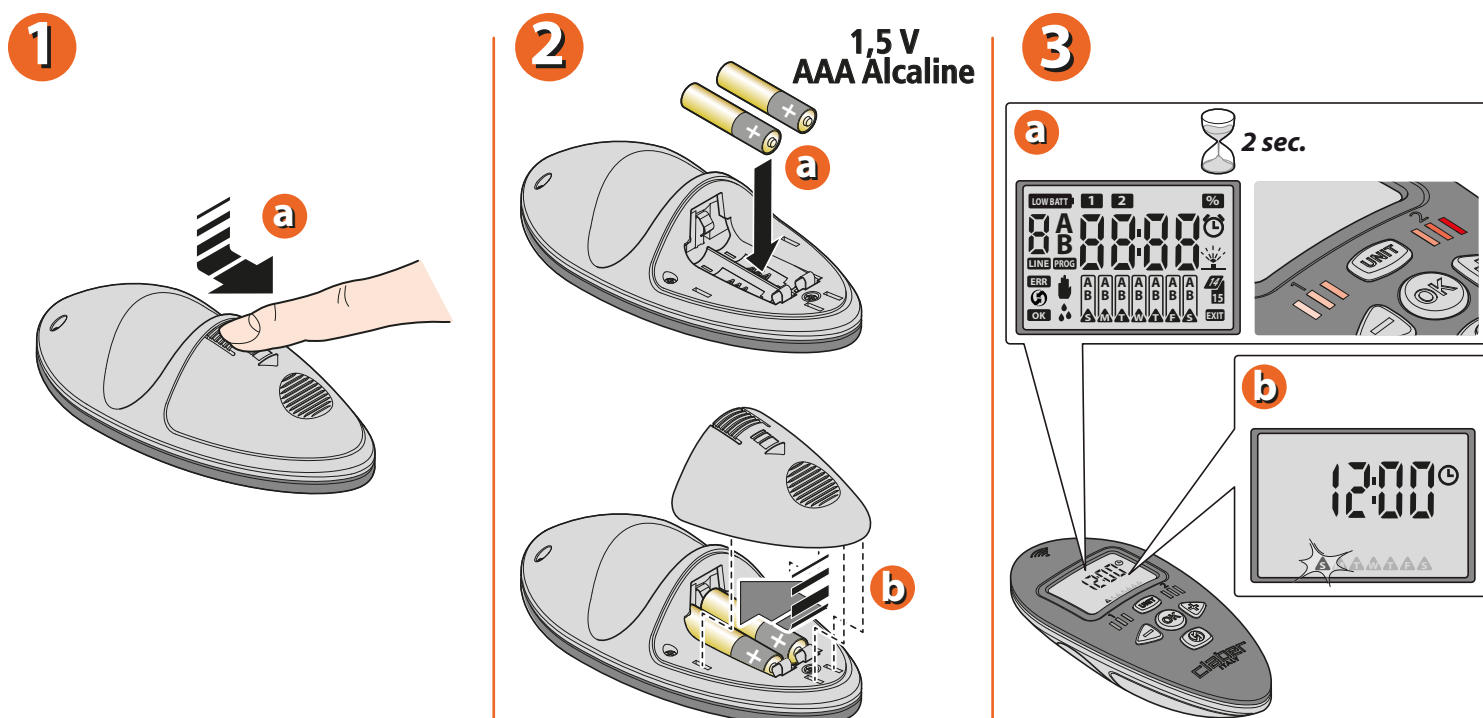
MANUAL PROGRAMMING OF RF TIMER.

Using the   buttons, select a line to be opened manually (n° 1, for example). The number of the line will blink. Press  to open the line. Press OK a second time to close the line. Use the   buttons to select the other line and repeat the procedure described above.



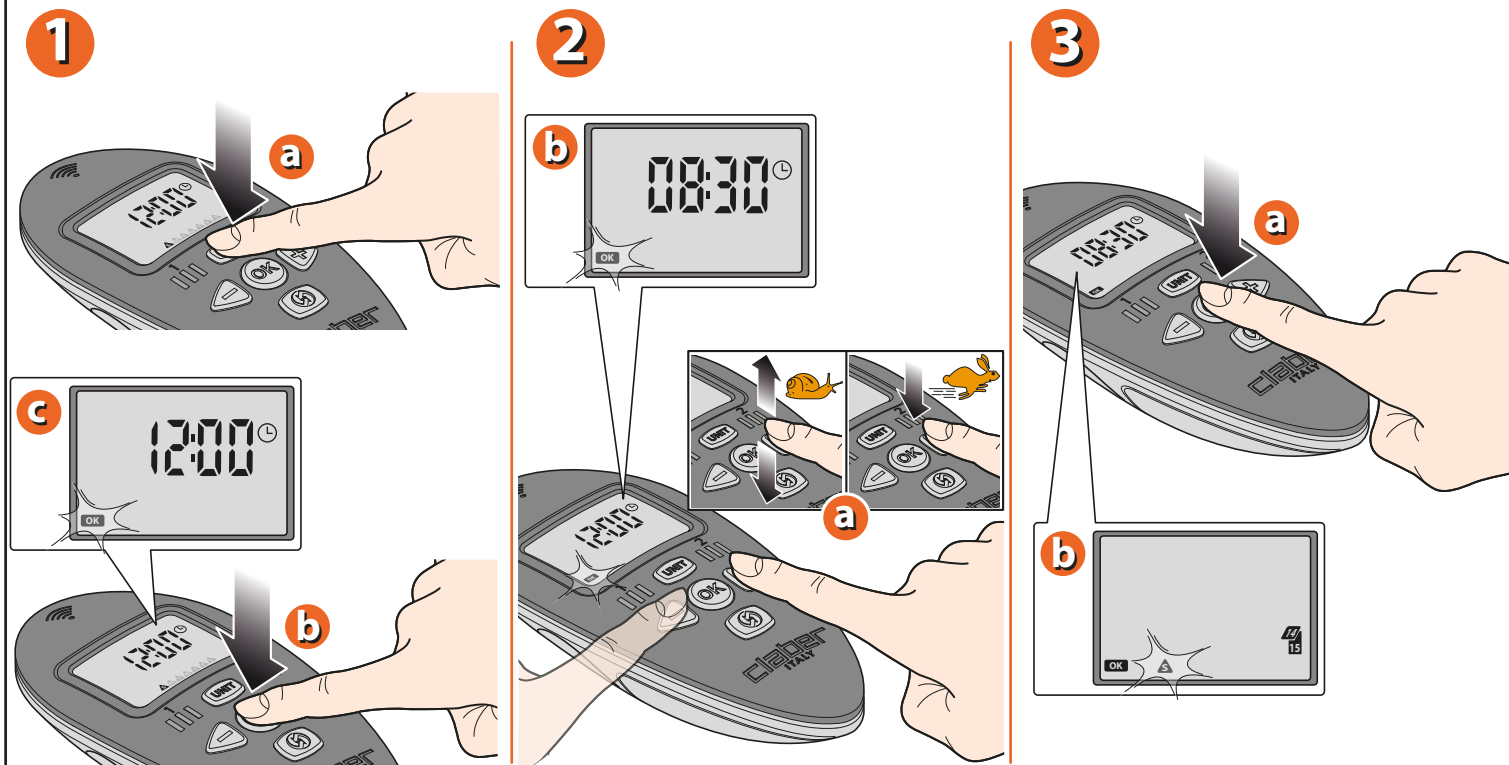
For Duplo RF (code): 90832

RADIO REMOTE CONTROL. FITTING THE BATTERIES. Remove the cover of the battery housing and fit the 2 batteries in the holder, observing the correct polarity; use only 2 new AAA 1.5V alkaline batteries. Refit the cover of the battery housing. The first time that the batteries are fitted, the initial TIME/DAY page appears on the display, indicating 12:00 and S for Sunday.



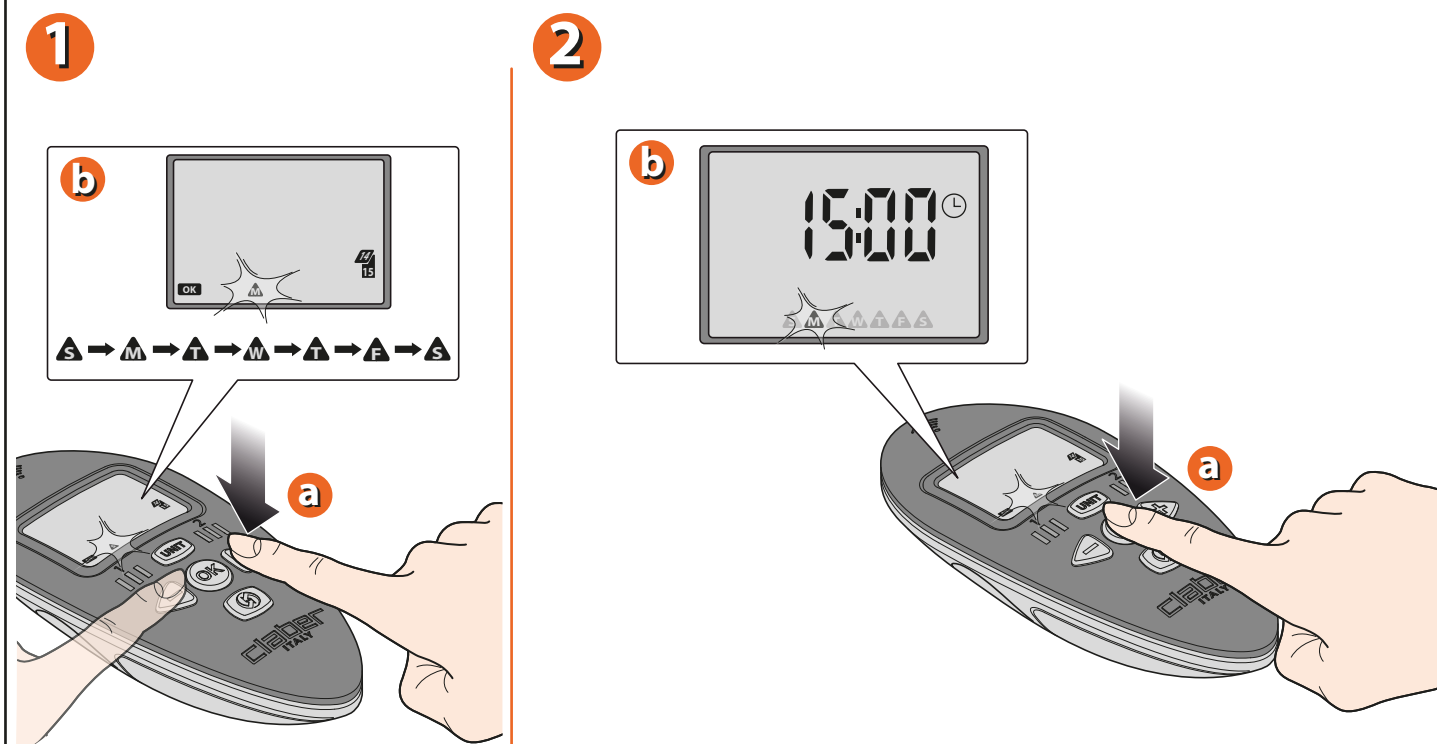
For Duplo RF (code): 90832

RADIO REMOTE CONTROL. SETTING THE TIME AND DAY. Press the **(UNIT)** button repeatedly to bring up the TIME/DAY page. To set the time, press **(OK)** — the OK symbol will blink — then proceed to set the required time (e.g. 08:30) using the **(←)** **(→)** buttons. Press **(OK)** to confirm the time, and the page for programming the day of the week will appear.



For Duplo RF (code): 90832

RADIO REMOTE CONTROL. SETTING THE DAY OF THE WEEK. Use the **(←)** **(→)** buttons to select the day of the week: S=Sunday – M=Monday – T=Tuesday – W=Wednesday – T=Thursday – F=Friday – S=Saturday. To confirm and quit, press **(OK)**; the main screen will appear with the current time and day blinking.




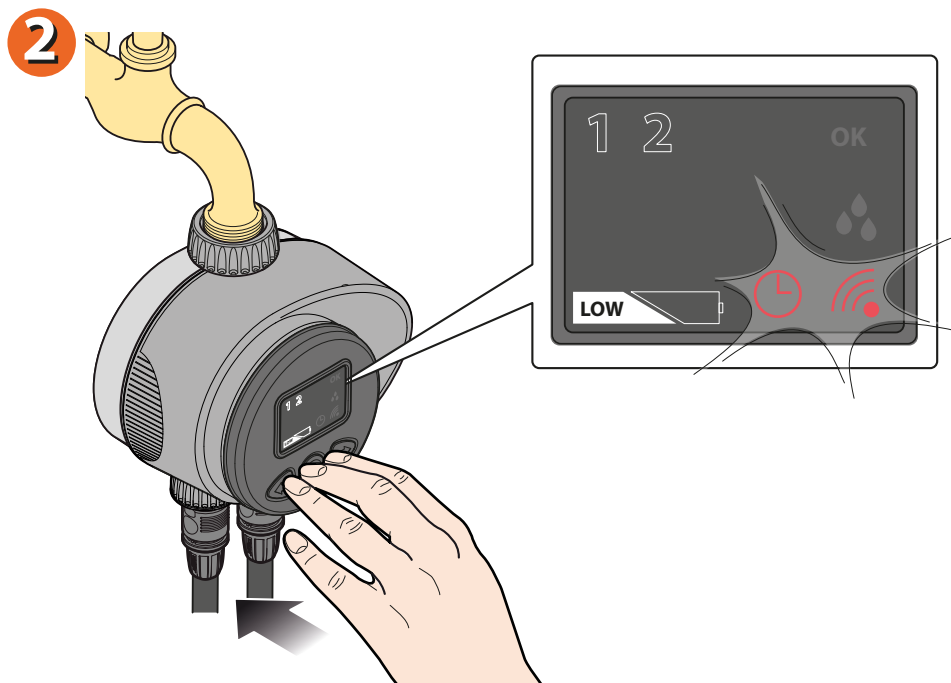
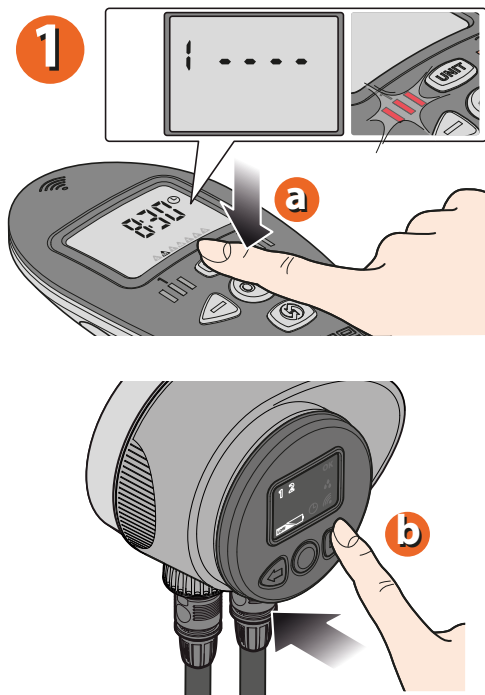
For Duplo RF (code): 90832

CONNECTION OF REMOTE CONTROL WITH RF 2-WAY TIMER.



On the remote control select the unit to be connected; in this instance 1---- or 2----. After selecting the unit (for example "1"), the Leds will blink in red.

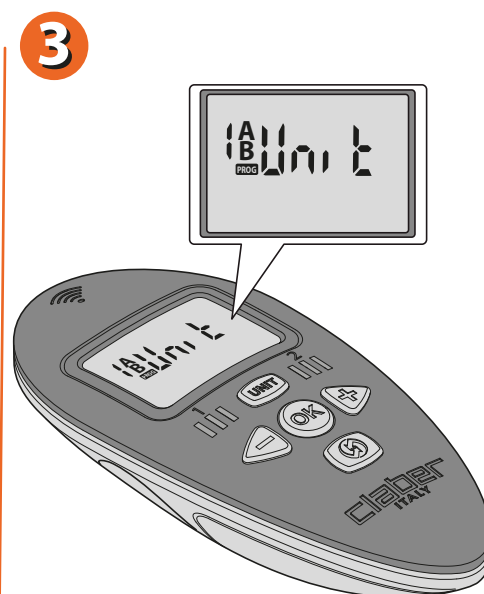
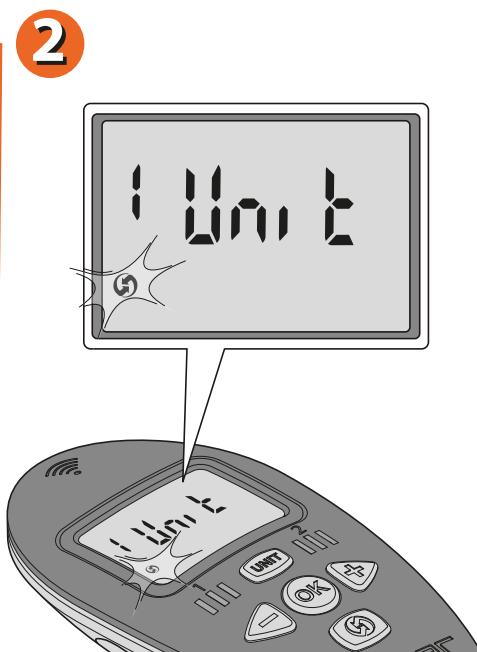
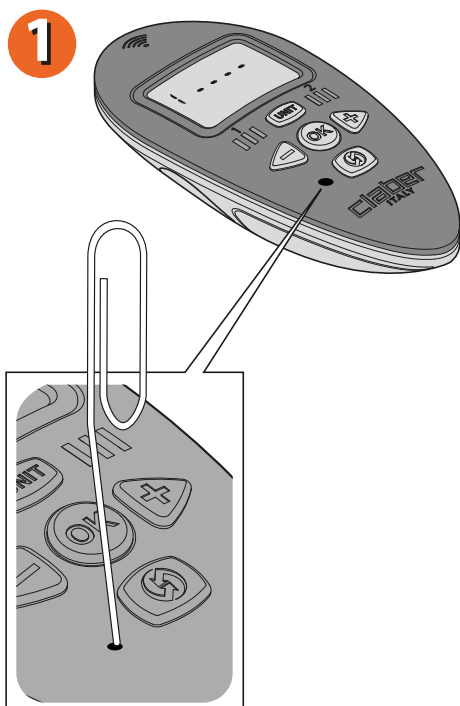
Press any button on the timer to light up the display.

Press the three buttons of the timer simultaneously, until they blink in red .



For Duplo RF (code): 90832

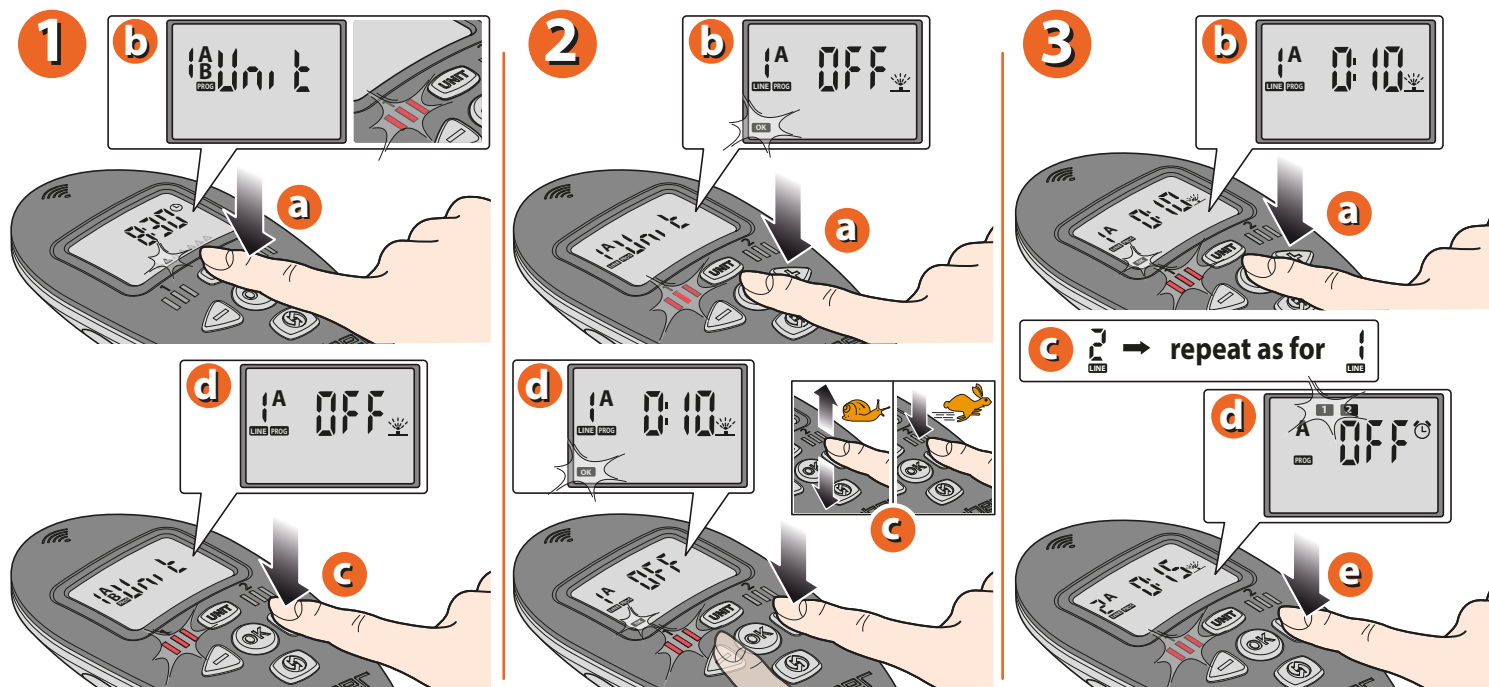
While the timer display keeps blinking, press the hidden button on the radio remote control with the tip of a paper clip. The display will start to blink and the symbol  will appear. The connection will be successfully completed when the message  appears on the remote control and the timer starts an initialization cycle (Leds light up in sequence, valves close in sequence).



For Duplo RF (code): 90832

PROGRAMMING. Set the duration of the watering cycles (RUN TIME) for the 2 LINES of RF Unit 1.

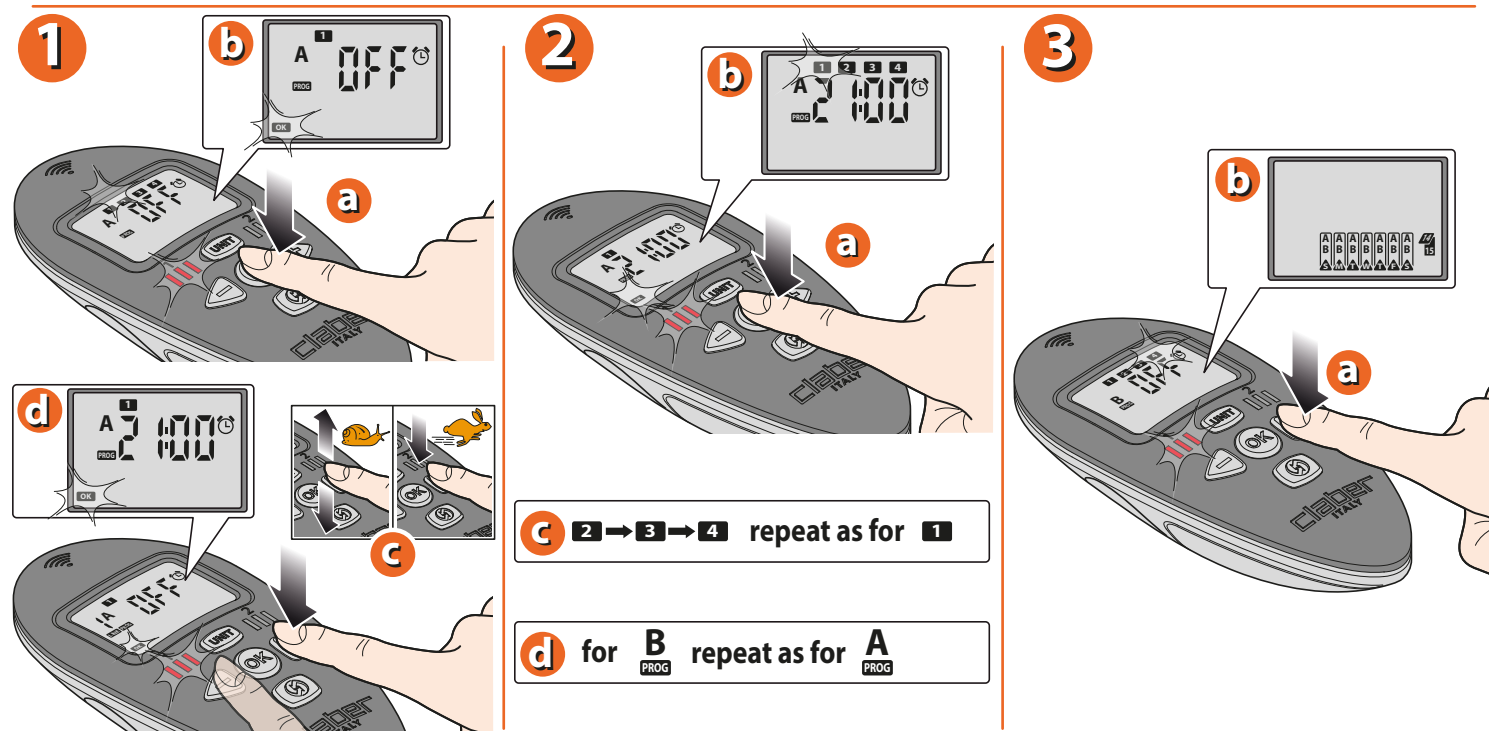
On the TIME/DAY page, press the **UNIT** button: this activates the UNIT page and the red Leds on RF Unit 1 will blink. Press the **➡** button to access the RUN TIME page. Press **OK** to set the run time on LINE 1 (the OK symbol will blink): use the **⏮** **⏭** buttons to set the minutes of watering (e.g.: 10 min.) (keeping the buttons pressed down, the numbers will scroll faster). Press **OK** to confirm the selected time. Press **➡** to set the run times for the other line, repeating the steps described above. Press **➡** to display the next programming page.



For Duplo RF (code): 90832

PROGRAMMING. Set up to 4 START TIMES for the watering cycle programmed on RF Unit 1.

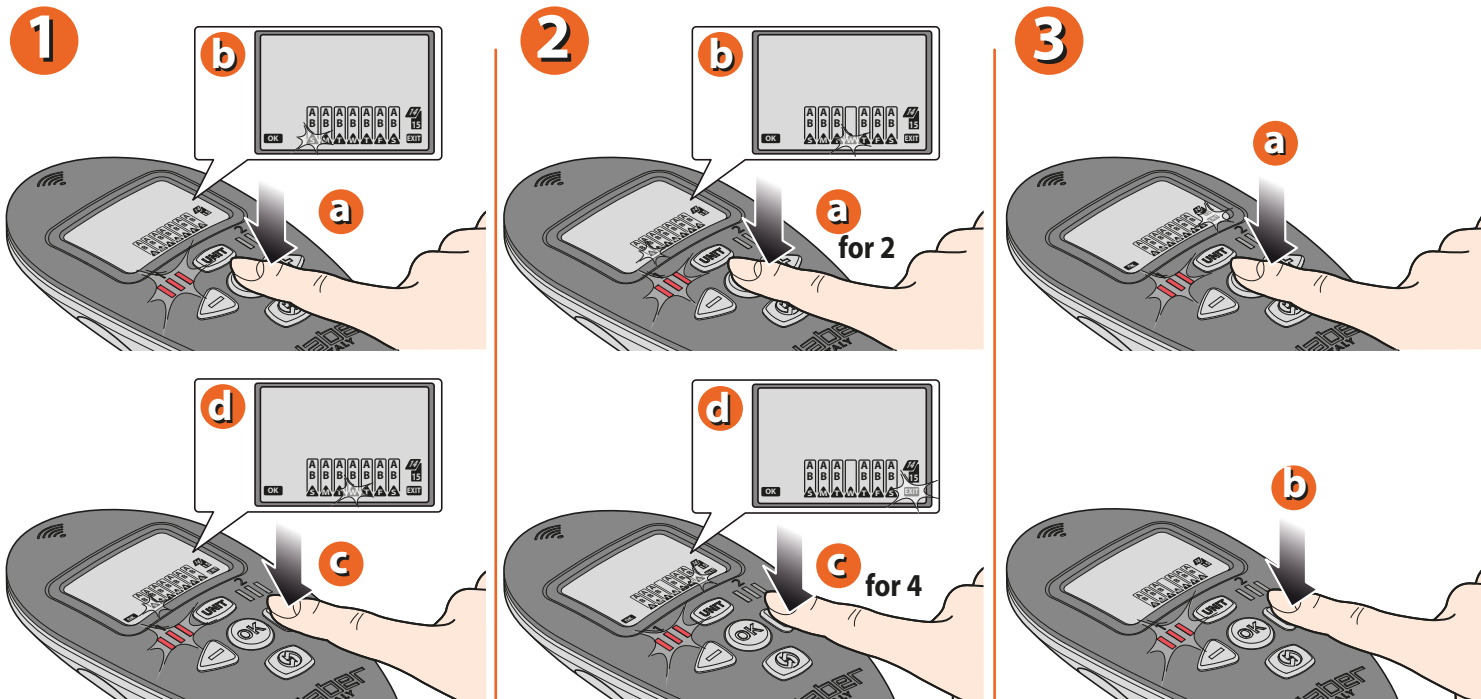
Press **OK** to set start time 1 — the n° 1 symbol remains permanently alight. Use the **⏮** **⏭** buttons to set start time n° 1 (e.g.: 21.00) (keeping the buttons pressed down, the numbers will scroll faster). Press **OK** to confirm the selected time. Press **➡** to set the subsequent start times 2, 3, 4 and repeat the steps described above: start times can also be set to OFF, using the **⏮** **⏭** buttons, so as to skip the relative watering cycle if not required. Press **➡** to display the next programming page.



For Duplo RF (code): 90832

PROGRAMMING. Select the days of the week on which to activate the programmed watering cycles (WEEKLY SCHEDULE).

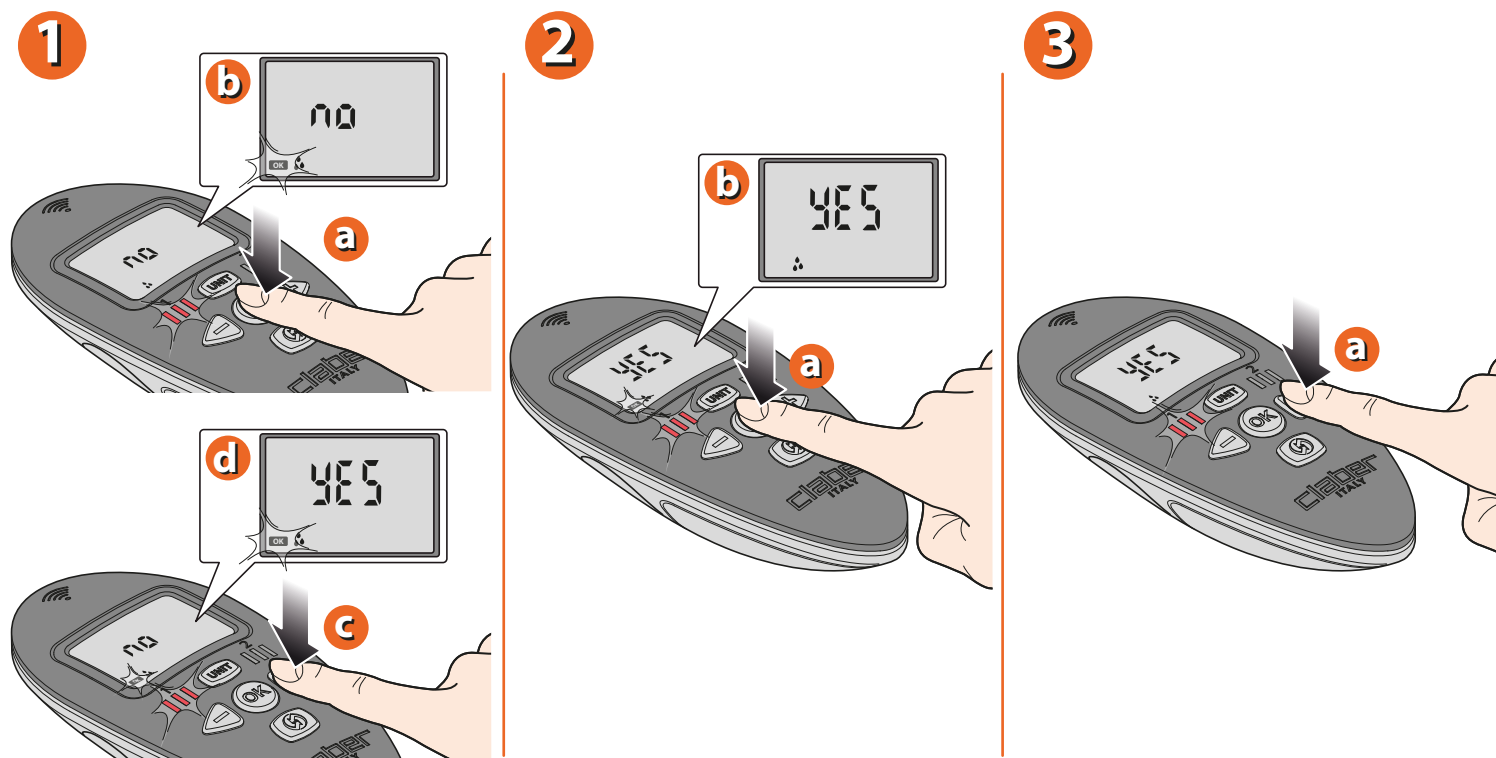
Press **OK** to access weekly programming (the S symbol blinks for Sunday). Press the **←** **→** buttons to cycle through the days of the week, which will blink when selected. Press the **OK** button repeatedly to skip watering on the day selected (in this example, Wednesday is skipped, W = WEDNESDAY). To quit, press the **←** **→** buttons so as to select EXIT; when EXIT starts blinking, press OK. Press **→** to display the next programming page.





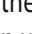
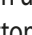



For Duplo RF (code): 90832

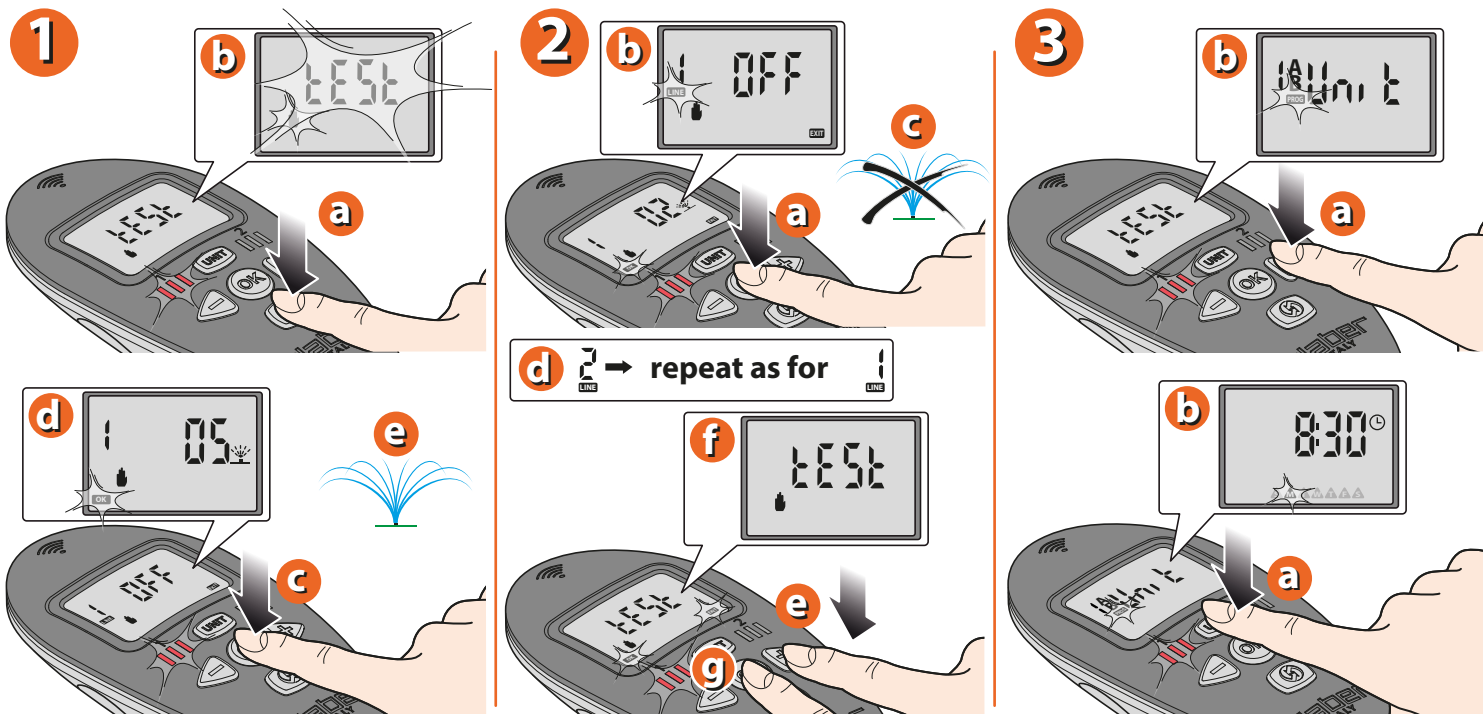
RAIN SENSOR.

Press the **OK** button to access activation/deactivation of the Rain Sensor; the OK message will blink. Pressing the **←** **→** buttons, the option can be toggled between YES (sensor activated) and NO (sensor deactivated). Press **OK** to confirm. Press **→** to display the next programming page.



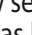





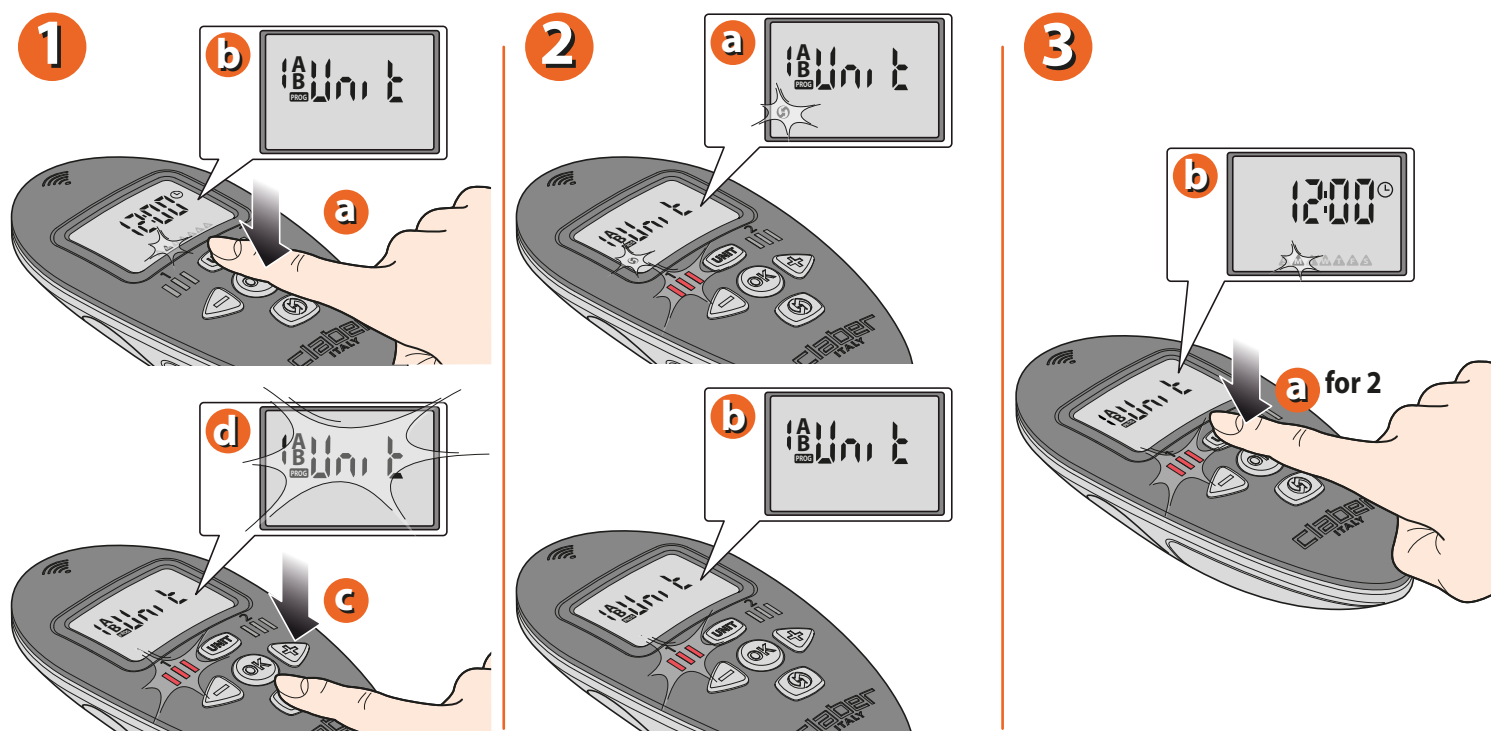
For Duplo RF (code): 90832

RADIO REMOTE CONTROL. TEST/MANUAL WATERING. Press the  button to activate communication between remote control and RF timer; the TEST message will blink briefly. The display shows line 1 and the message OFF; press  to activate watering for a preset time of 5 minutes. Press  a second time to stop watering before the end of the preset time. To open the valves on the other line, press  and repeat the same sequence of steps. To quit the function, press the  button until the TEST message appears, then press . Press  to go back to the UNIT page. To go back to the TIME/DAY page, press the UNIT button twice.



For Duplo RF (code): 90832

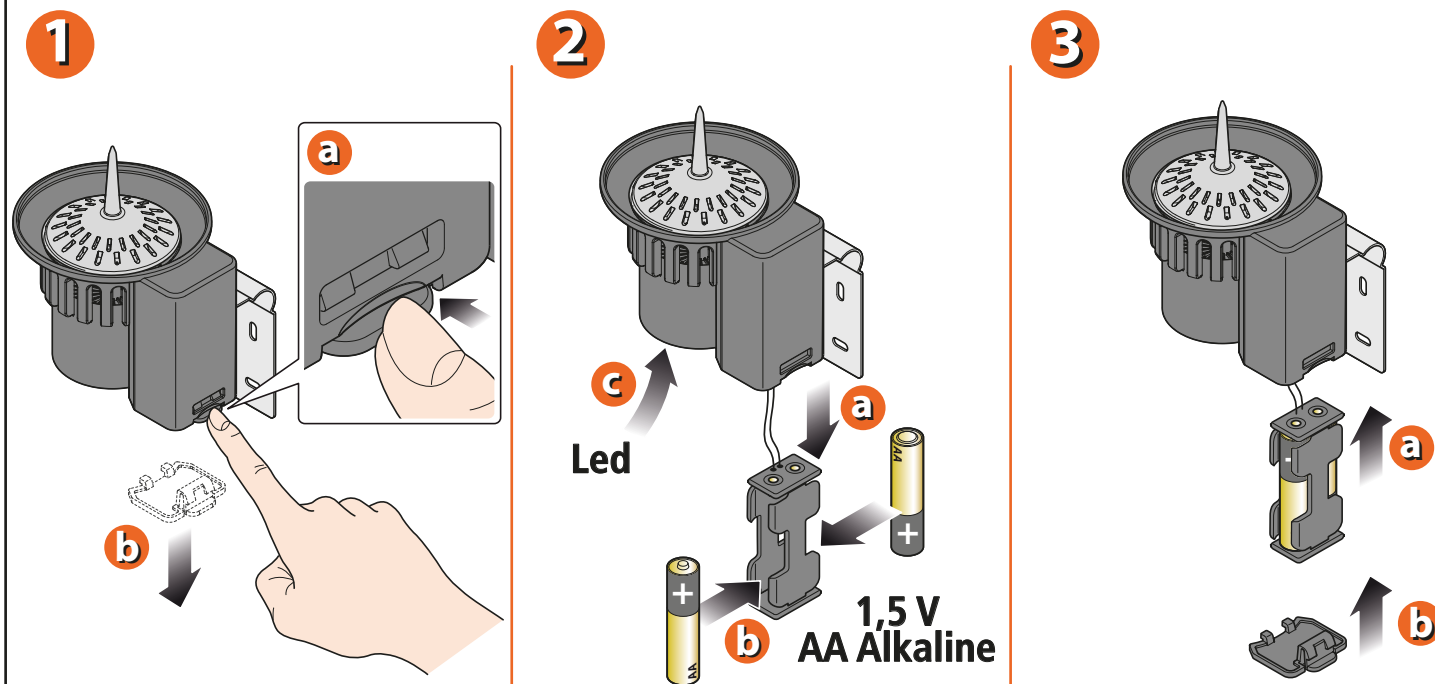
TRANSFER OF PROGRAMMING DATA TO TIMER. Press the  button to access , then press the  button. The RF icon  will appear blinking on the display of the remote control for few seconds, with the green reception signal blinking on the timer. The disappearance of the RF symbol  indicates that the update has been completed successfully, and the watering programmes will start automatically. In case that the ERR message appears on the remote control, bring it closer to the timer and repeat the operation described previously. To go back to the TIME/DAY page, press the  button twice.



For Duplo RF (code): 90832

RAIN SENSOR. FITTING THE BATTERIES.

Fitting/replacement procedure: press on the tab firmly and pull downwards. Remove the cover of the battery housing, draw the battery holder out of the housing and fit the 2 batteries in the holder, observing the correct polarity. Reposition the battery holder in the housing and refit its cover.



For Duplo RF (code): 90832

For further information, please refer to the instruction manual supplied with the product.