

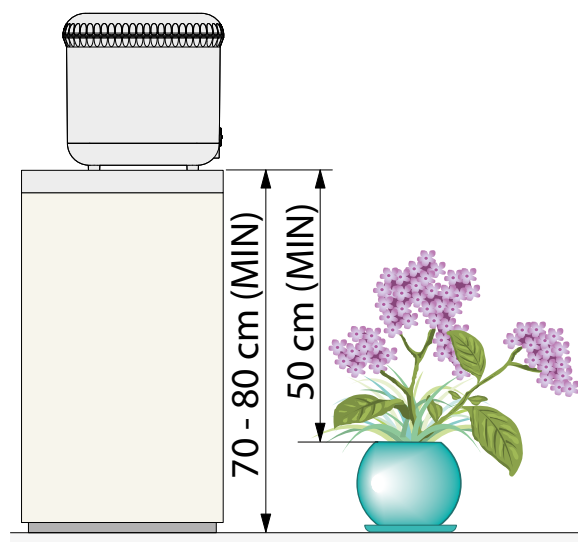
**Position.** Oasis® must be installed in closed environments, protected from atmospheric agents and poor weather conditions. To prevent the water in the internal tank from overheating, position Oasis® in a shaded and cool area, away from windows or glass partitions and in any case, away from direct sunlight.

Once the installation position has been selected, lift Oasis® holding it at the bottom with both hands and place it on a unit or a shelf, at a height of approximately 70-80 cm from the ground: the unit or the shelf must be stable, level and be able to support the weight of Oasis® when full of water (approximately 30 kg). Also, make sure that Oasis® is at least 50 cm from the edge of the tallest pot.

1



2



For Oasis (cod.): 8053

**Position.** Position the plant pots on the floor near the unit where Oasis® is positioned.

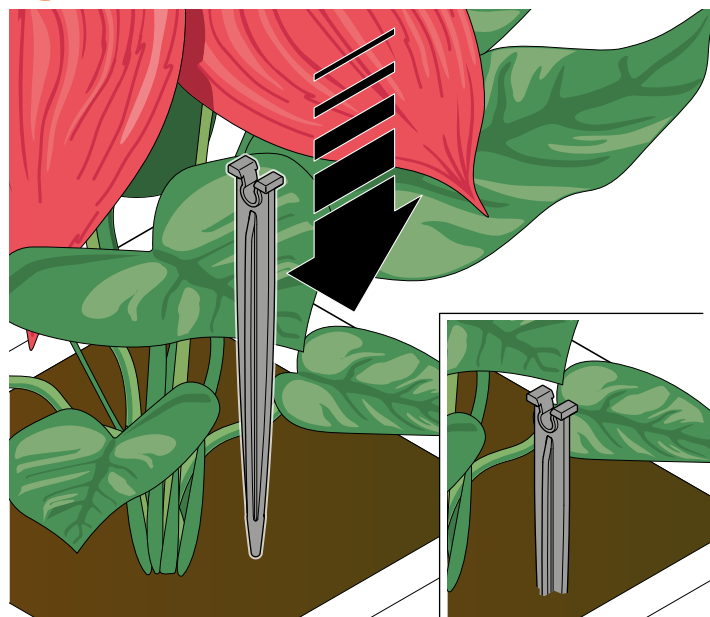
Remember to place a pot saucer below the plants to collect any excess water.

Plant the plastic stakes provided in the soil: each stake will correspond to a dripper (the maximum number of drippers which can be used with Oasis® is 20). Useful suggestions: place the stakes close to the stems of the plants; use one or more stakes per pot, depending on the pot size and individual plants' water requirements.

1

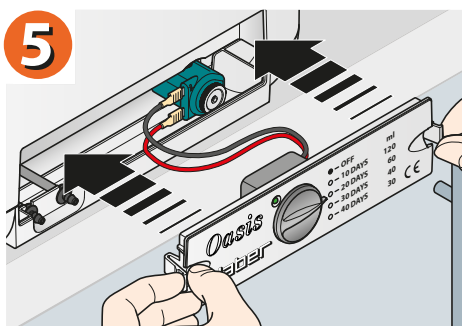
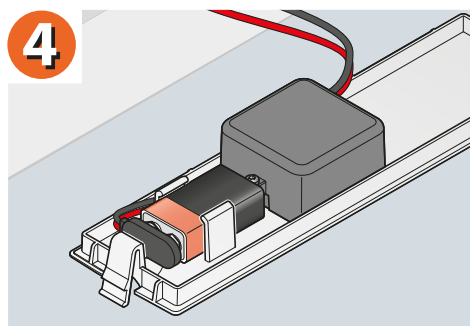
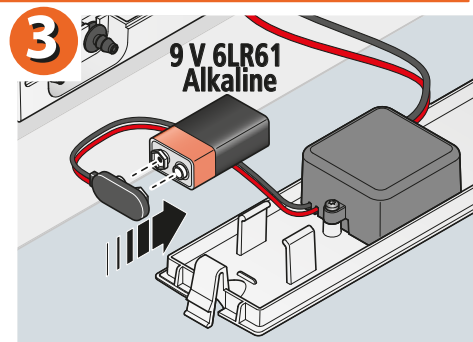
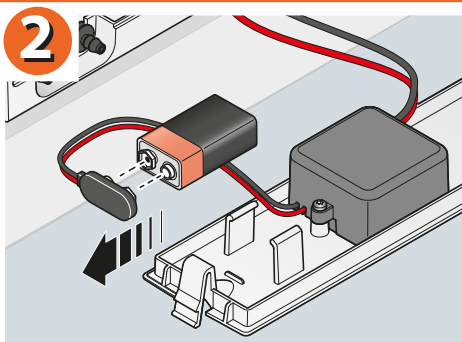
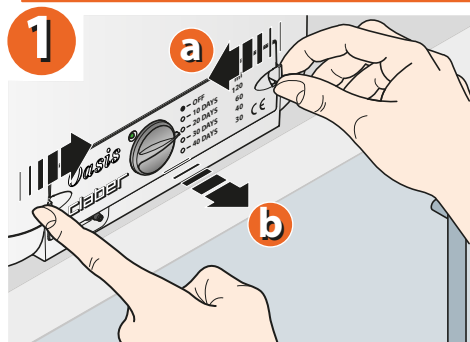


2



For Oasis (cod.): 8053

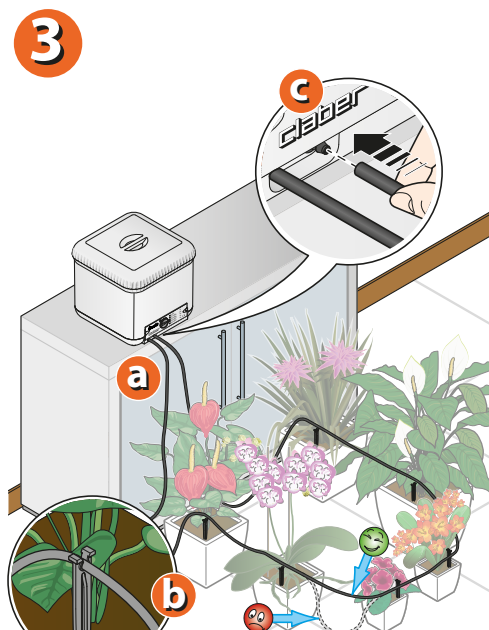
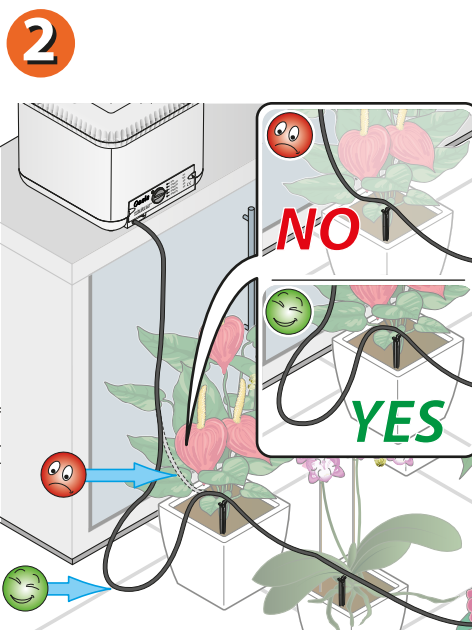
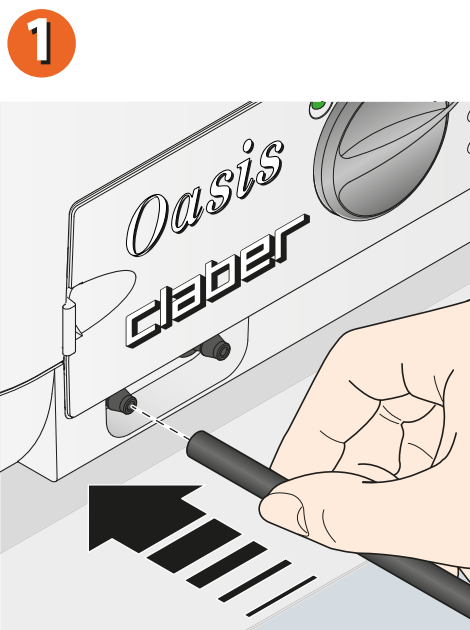
**Fitting the battery.** In order to operate, Oasis® requires a new 9V (6LR61) Alkaline battery, with an expiry date exceeding one year. To insert or replace the battery, proceed as follows: Act on the keys on the sides of the front panel (1) until you hear it engage. If present, remove the flat battery (2). Connect the new battery to the connector respecting the polarity (3). Put the new battery into the battery compartment (4). Replace the front panel (5). For optimal operation, it is recommended that the battery is replaced at least once a year. In any case, before using Oasis®, check the battery charge by turning the programming selector switch to any programme and checking the led light: the led flashes approximately every 2 seconds the battery is charged, the led stays off the battery is drained and needs to be replaced.



For Oasis (cod.): 8053

**Connection.** In order to ensure that Oasis® operates correctly, the two lengths of hose leading from the tank panel must be long enough to touch the floor before they are connected to the drippers in the first pots: this simple precaution is necessary to make sure that watering starts correctly.

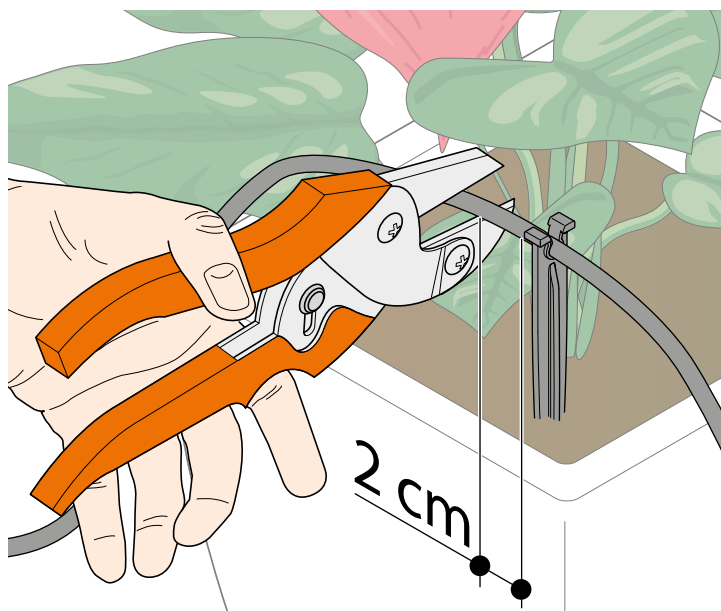
Unroll the hose moving around the plants making sure that they do not obstruct people or animals and select the shortest possible path. Insert the hose into the forks of the individual stakes until it takes on the correct shape, taking care not to create kinks in the hose. Once all the pots have been connected, bring the hose back to the second connector in the front panel of Oasis® (if necessary, cut off the excess hose using scissors).



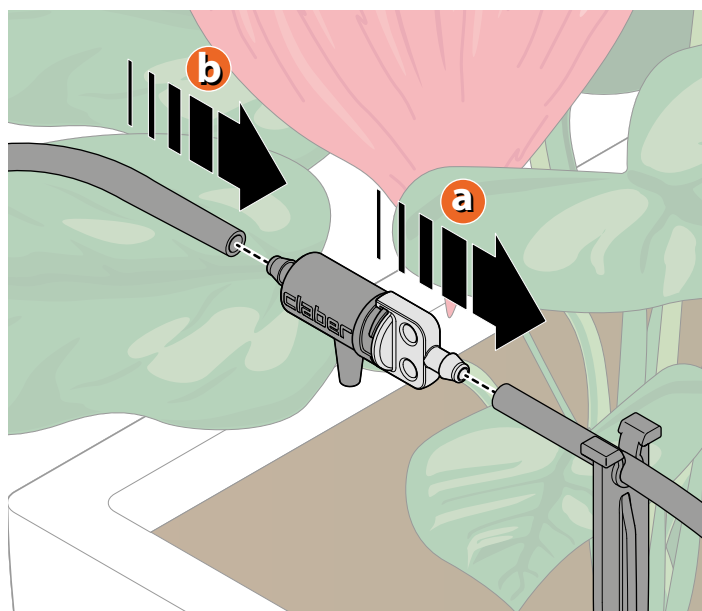
For Oasis (cod.): 8053

**Connection.** Cut the distribution hose approximately 2 cm from the stake. Connect a dripper by pressing the hose firmly onto each end: make sure that the dripper outlet is facing downwards. Use the same procedure for all the other stakes, until all the drippers required have been fitted. You have now created the circuit which will distribute the water to the pots, complete with drippers.

1



2

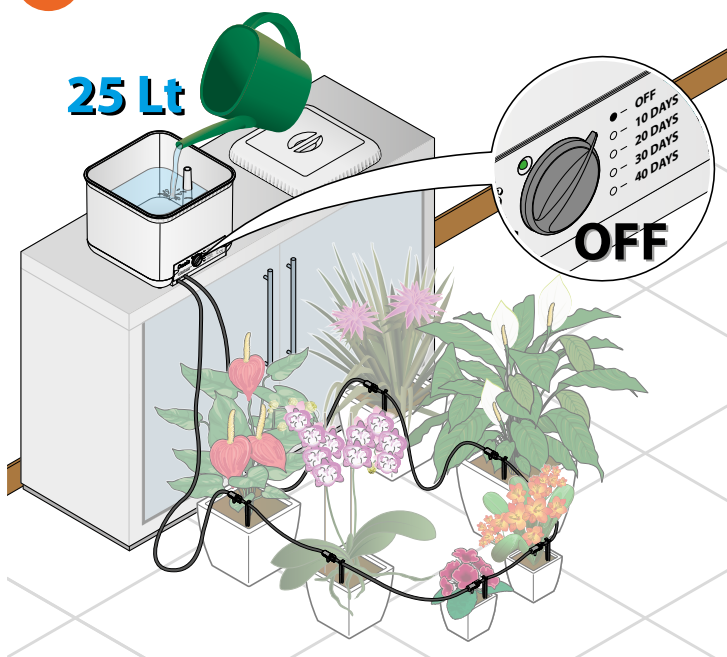


For Oasis (cod.): 8053

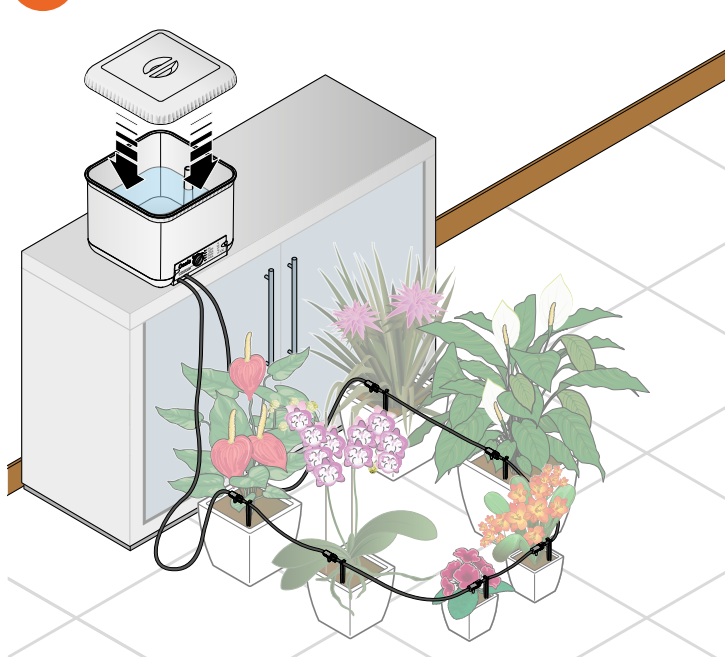
**Filling.** Check that the programming selector switch is set to ● - OFF and use a watering can to refill the water tank with 25 litres of water.

Any liquid or granular fertilisers are to be added directly to the soil in the pots, **do not under any circumstances** put them into the water in the tank. Close the cover before activating Oasis®.

1



2



For Oasis (cod.): 8053

**Selecting the watering programme.** Oasis® has 4 programmes, specially designed to allow independent operation for 10, 20, 30 or 40 days autonomy which can be selected using the programming selector switch on the front.

Distribution of the four programmes takes place at two separate times during the day as follows:

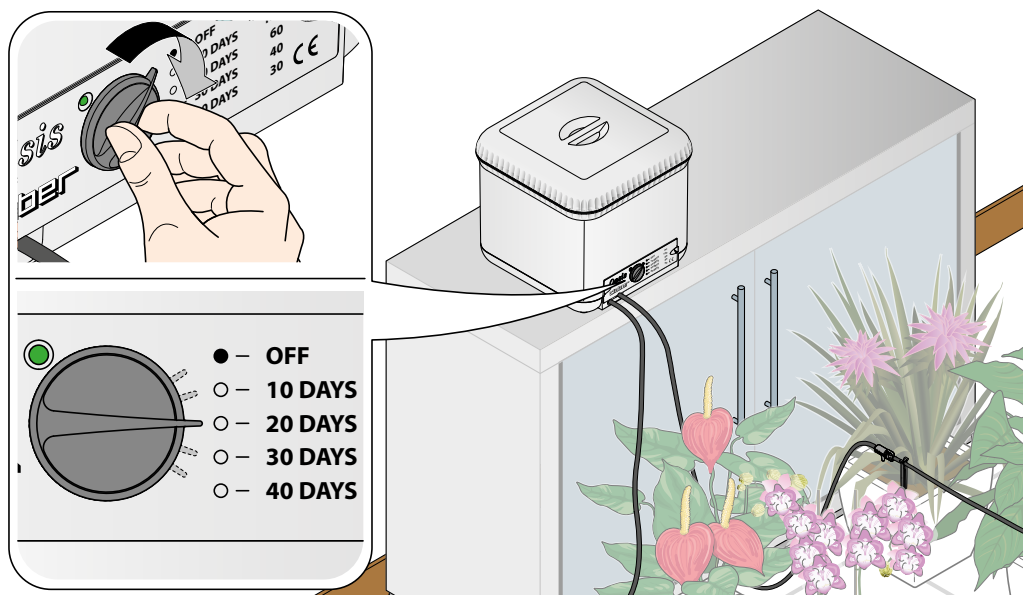
1

PROGRAMME	AUTONOMY (no. days)		WATER DISTRIBUTION PER DRIPPER (in cm <sup>3</sup> )	TOTAL DELIVERED (in litres)		TIME (in min)
	10 pots	20 pots		10 pots	20 pots	
<b>O - 10 DAYS</b>	20 days	10 days	<b>60x2 cc</b> per days	12 l	24 l	12x2
<b>O - 20 DAYS</b>	40 days	20 days	<b>30x2 cc</b> per days	12 l	24 l	6x2
<b>O - 30 DAYS</b>	60 days	30 days	<b>20x2 cc</b> per days	12 l	24 l	4x2
<b>O - 40 DAYS</b>	80 days	40 days	<b>15x2 cc</b> per days	12 l	24 l	3x2

For Oasis (cod.): 8053

**Selecting the watering programme.** To select the required programme, set the programming selector switch from ● - OFF to the required position: **10, 20, 30 or 40 days**. Oasis® is now in operation, automatically controlled by the electronic timer. Regardless of the water level in the tank, Oasis® will deliver the same amount of water to your pots each day, throughout the programmed period, thanks to a special internal device which automatically regulates the water pressure. As you can see from the table, the total amount delivered is always 24 litres. Since the tank's capacity is 25 litres, it will never be completely emptied. This will prevent air bubbles from entering the distribution hose.

1



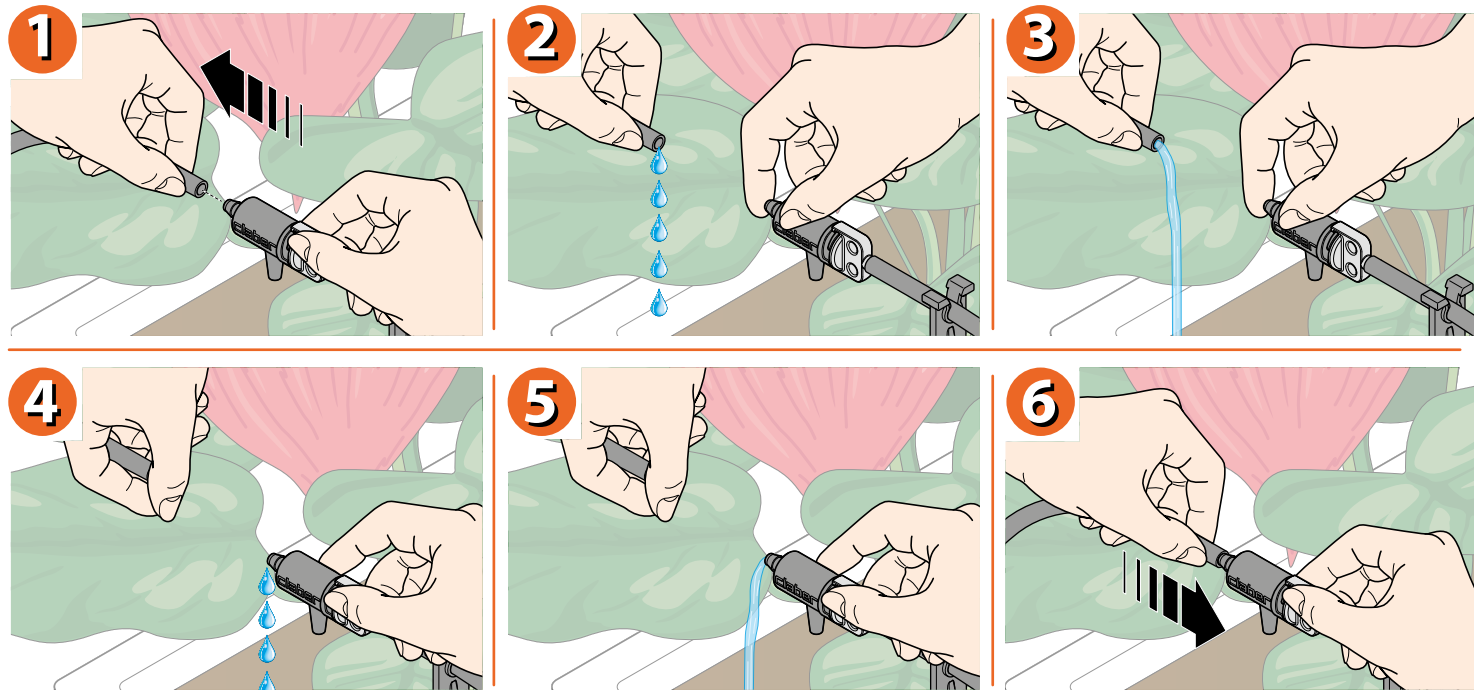
For Oasis (cod.): 8053



**Venting the air from the circuit.** For your Oasis® to operate correctly, you must expel all the air from inside the circuit. The procedure is very simple.

Set up the system and switch on your Oasis® with your preferred program.

Disconnect the hose connected to the dripper halfway along the loop circuit, put your finger over one end to seal it, and wait for water to flow from the free end. Now put a finger over the end of the hose from which water is flowing, and at the same time remove your finger from the other end of the circuit allowing the water to flow. At this point, reconnect the hose to the dripper and restore the loop circuit.



For Oasis (cod.): 8053

**Cleaning the filter.** The filter must only be removed and refitted when the tank is empty.

Before each use check the state of the filter and eliminate any impurities from the water which may have been caught by the mesh. If necessary, remove the filter and rinse under running water.

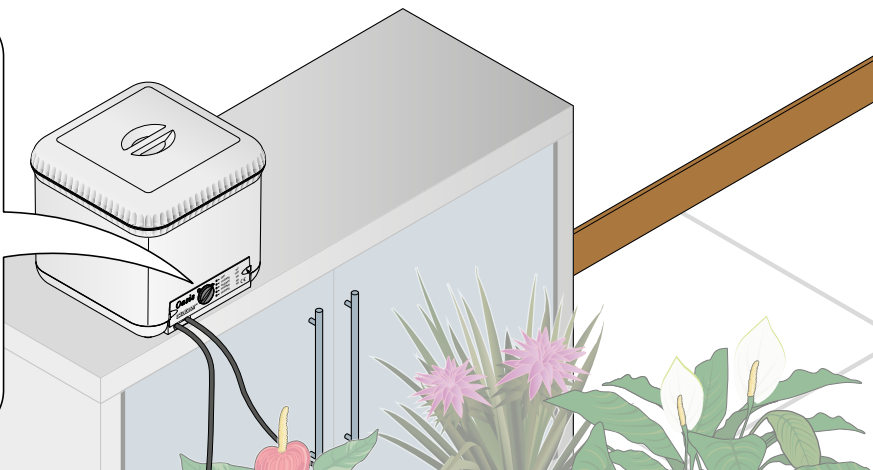
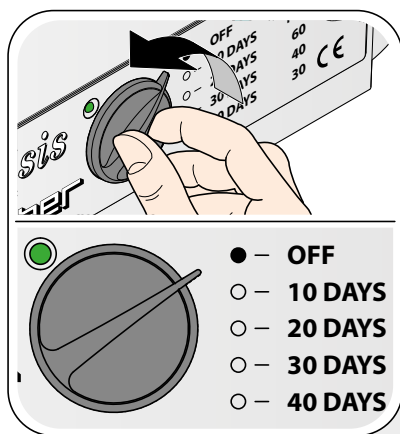
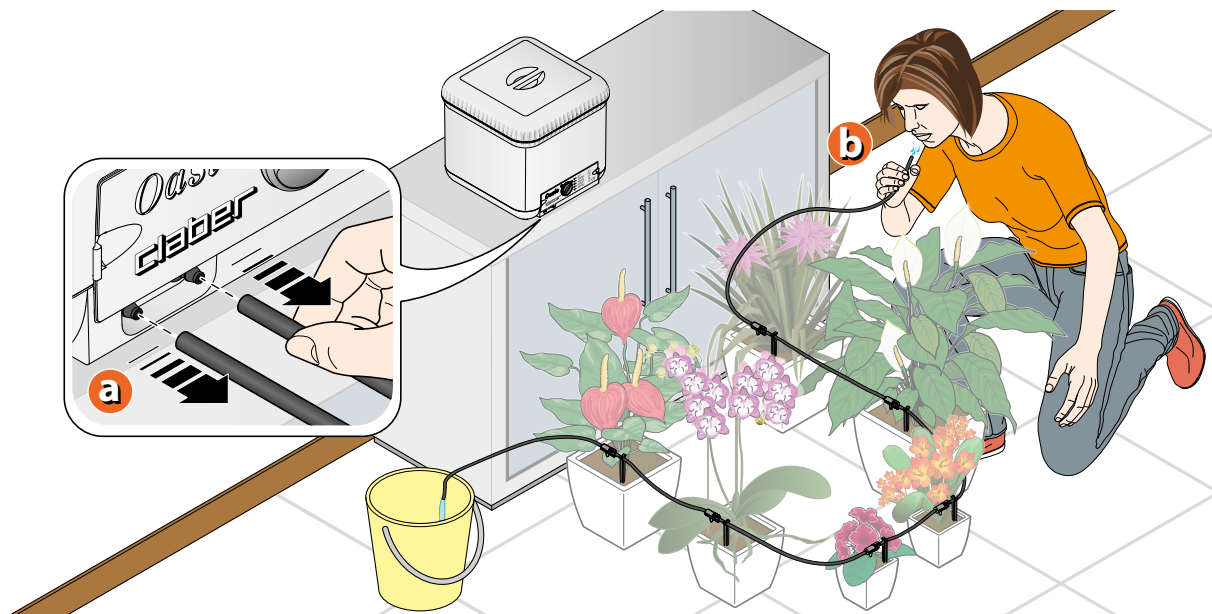
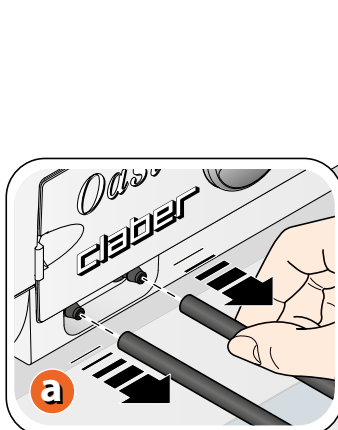
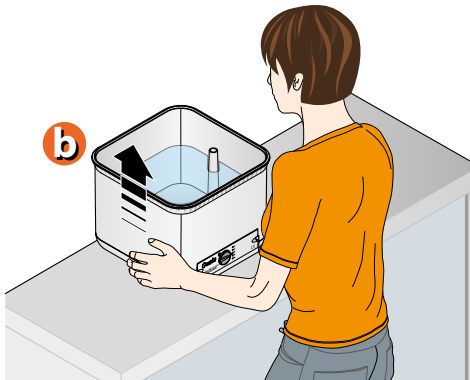
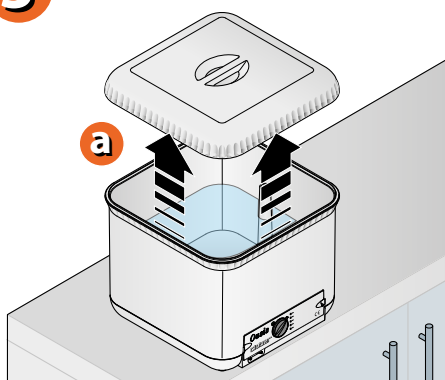
**Cleaning the drippers.** The drippers can be cleaned and inspected to allow them to be cleaned inside if necessary: to do this, separate the two pieces which make up the dripper and rinse them under running water.



For Oasis (cod.): 8053

**Cleaning and maintenance.** When no longer in use:

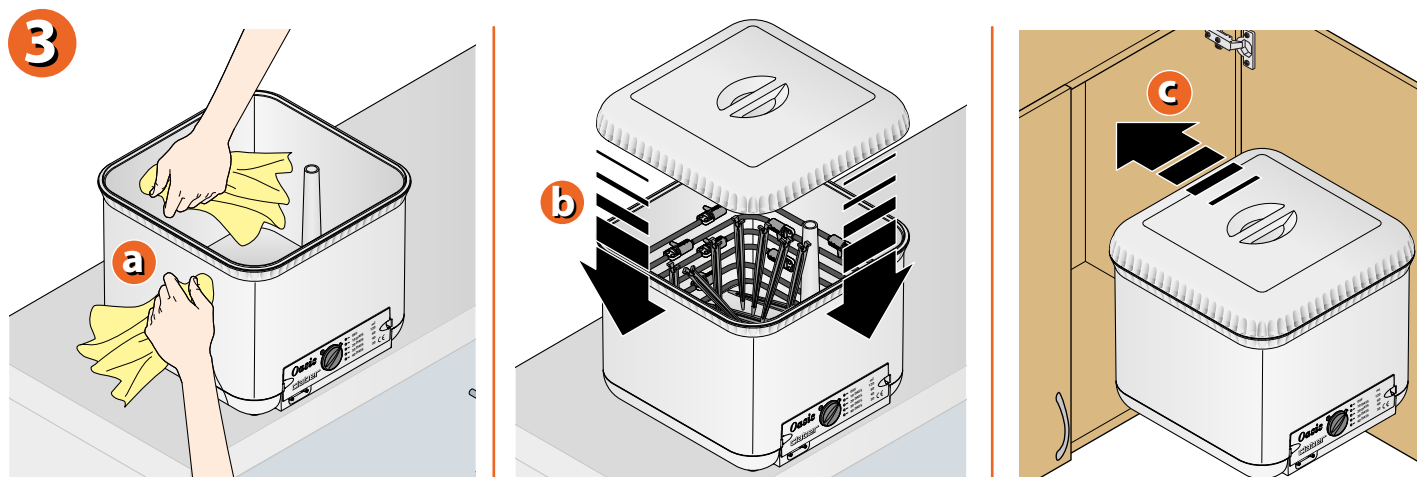
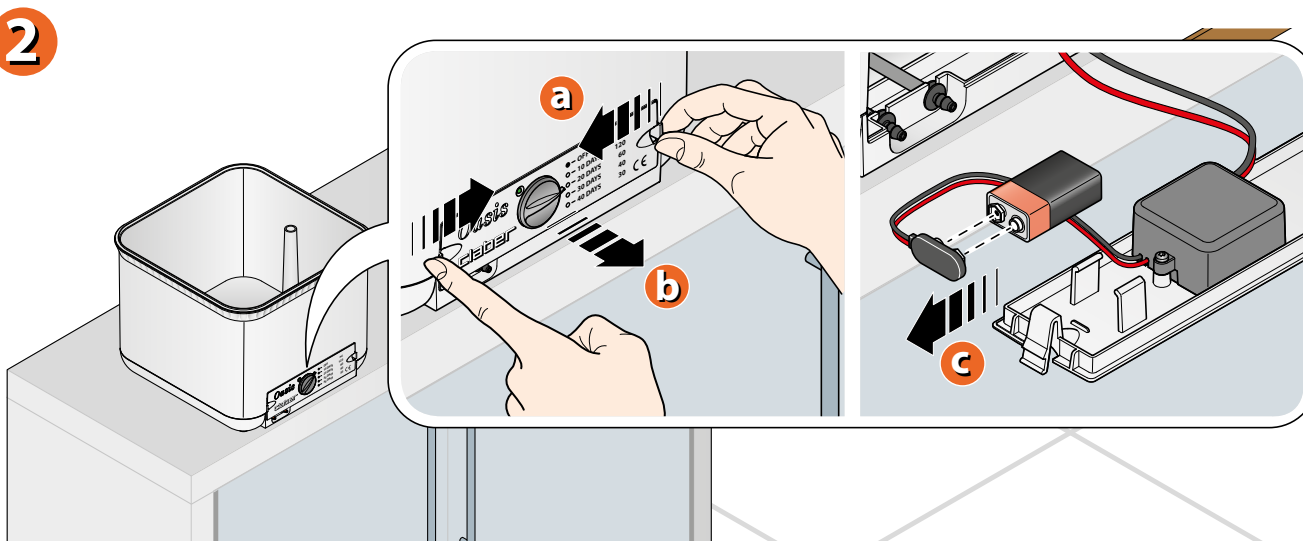
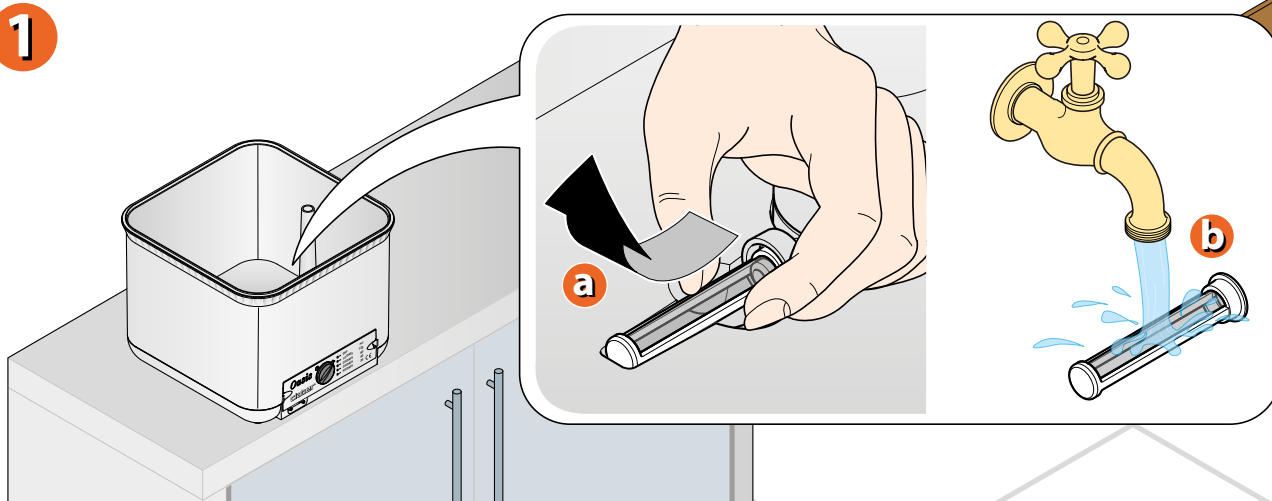
- Set the programming selector switch to ● - OFF.
- disconnect both ends of the hose from their connectors, blow into the hose to drive all the water out and into a container (for example, a watering can).
- Remove the cover and lift Oasis® from the bottom using both hands and then empty into a sink.

**1****2****3**

**Cleaning and maintenance.**

- check the state of the filter and eliminate any impurities from the water which may have been caught by the mesh.
- Remove the battery.
- Use a soft cloth to dry the inside and outside of the tank and put Oasis® back with the cover fitted.

Do not disconnect the drippers from the hose: this avoids the risk of pieces being lost, and the distribution circuit will be ready the next time it is needed. Remove any remaining soil from the stakes. For convenient storage, all the parts can be placed inside the empty tank.



**For Oasis (cod.): 8053**

For more information and further details, please consult the instruction manual supplied with the product.