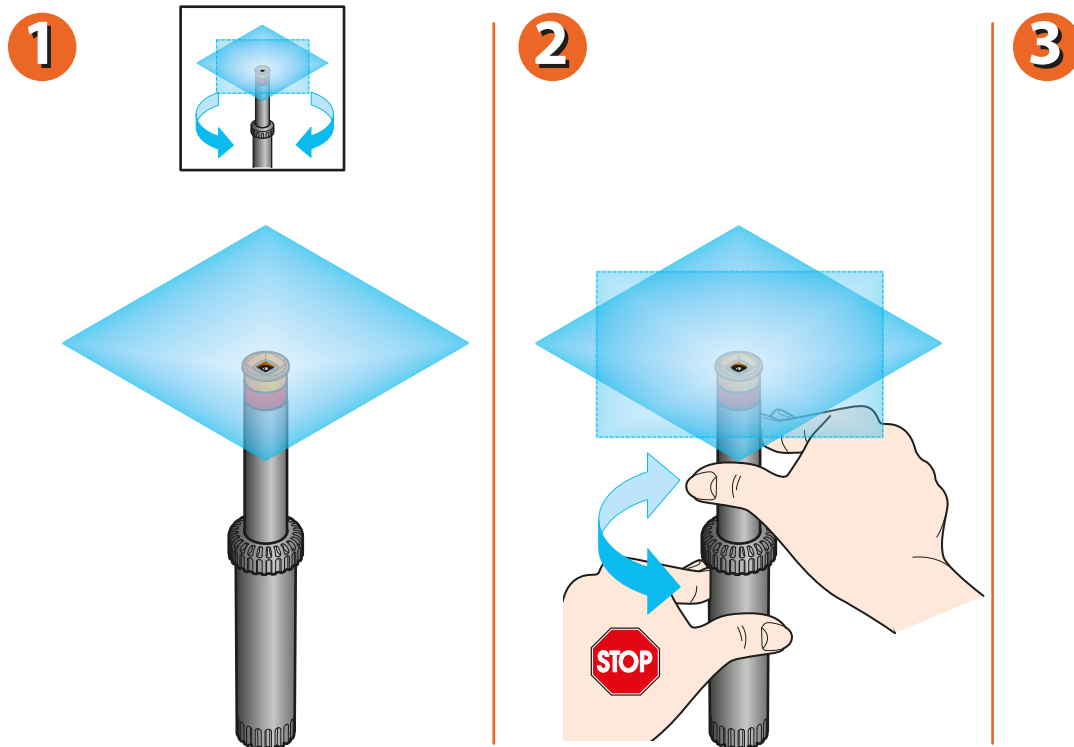


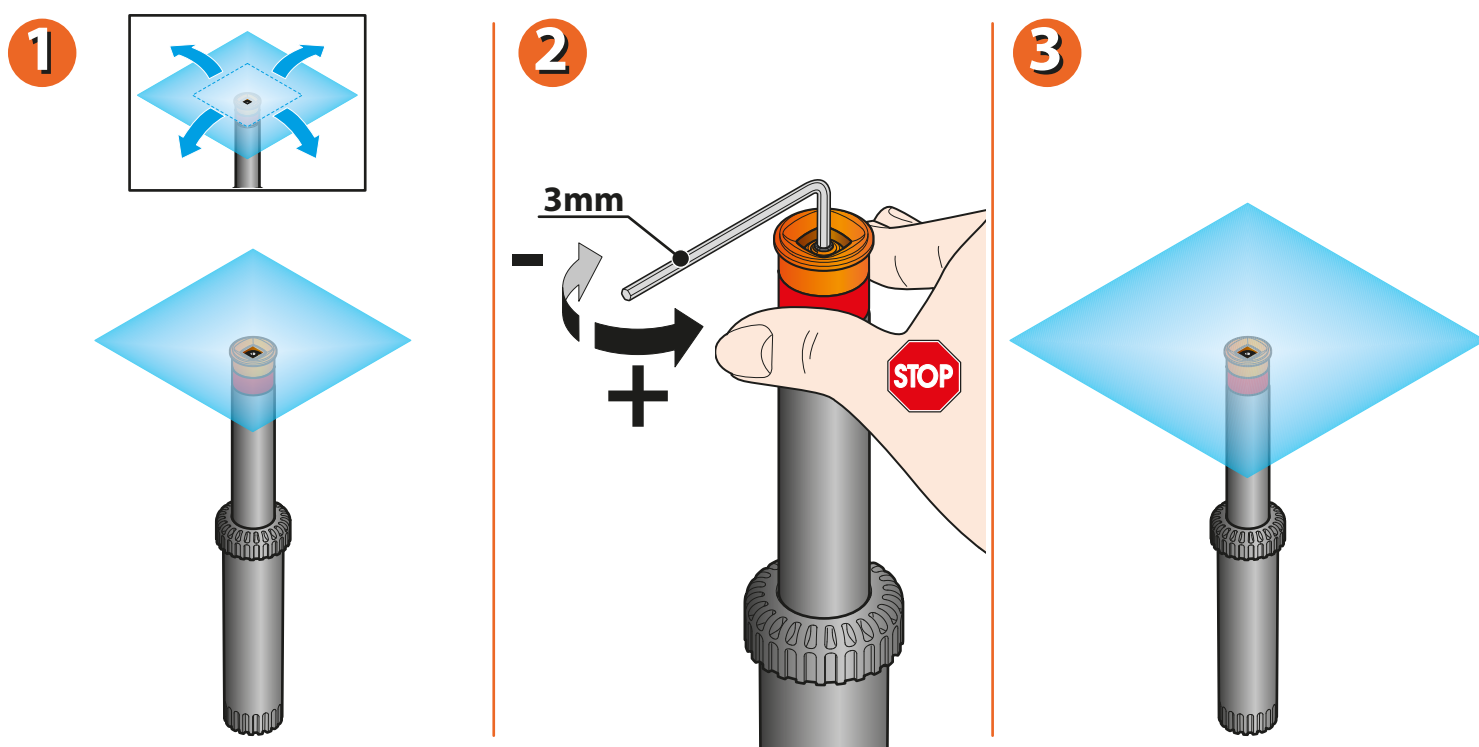
**SETTING THE DIRECTION OF THE JET.** This operation is required to vary the direction of the spray jet, and must be carried out with the system in operation.

Hold the body of the pop-up sprinkler fast with one hand, and turn the stem with the other.



For Pop-Up (cod.): 90133

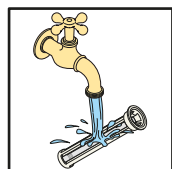
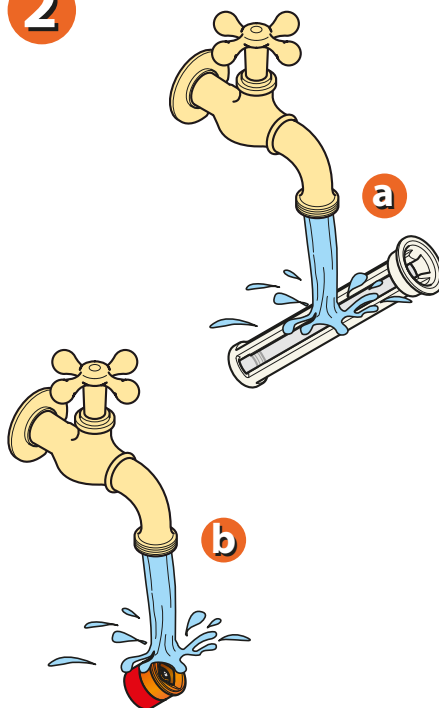
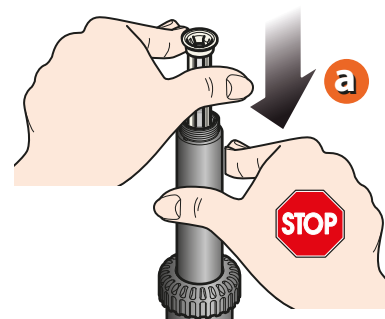
**ADJUSTING THE RANGE.** To increase or reduce the length of the jet, just a few simple steps are required. Using a 3mm hex socket key, turn the internal adjuster screw anticlockwise for a longer jet, or clockwise for a shorter one.



For Pop-Up (cod.): 90133


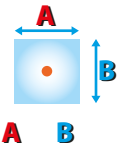
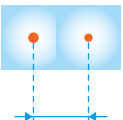
Should the head become fouled by grit, sand, soil or other dirt, proceed as follows:

- holding the the stem with one hand, unscrew the upper part
- take out the filter and clean it, together with the upper part of the sprinkler, under running water
- reposition the filter and reassemble the upper part of the sprinkler.

**1**

**2**

**3**


For Pop-Up (cod.): 90133

Tables indicating water usage of sprinklers.

Pop-Up square area (cod.): 90133				64 m <sup>2</sup>
Bar	l/min	m <sup>2</sup>		
1,5	8,9	36,0	6 x 6 m	5,5 m
2,0	10,3	49,0	7 x 7 m	6,3 m
3,0	12,6	64,0	8 x 8 m	7,3 m

For Pop-Up (cod.): 90133

For more information and further details, please consult the instruction manual supplied with the product.