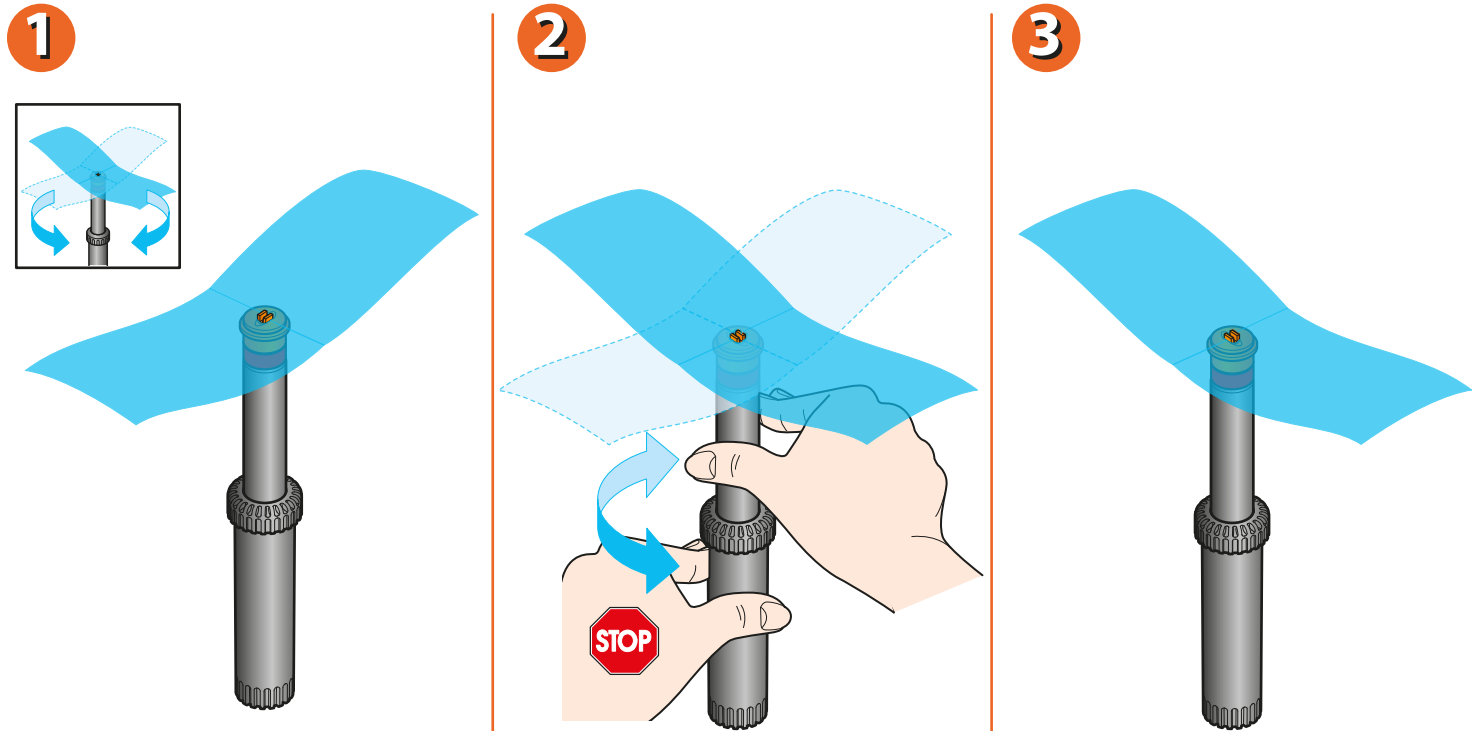
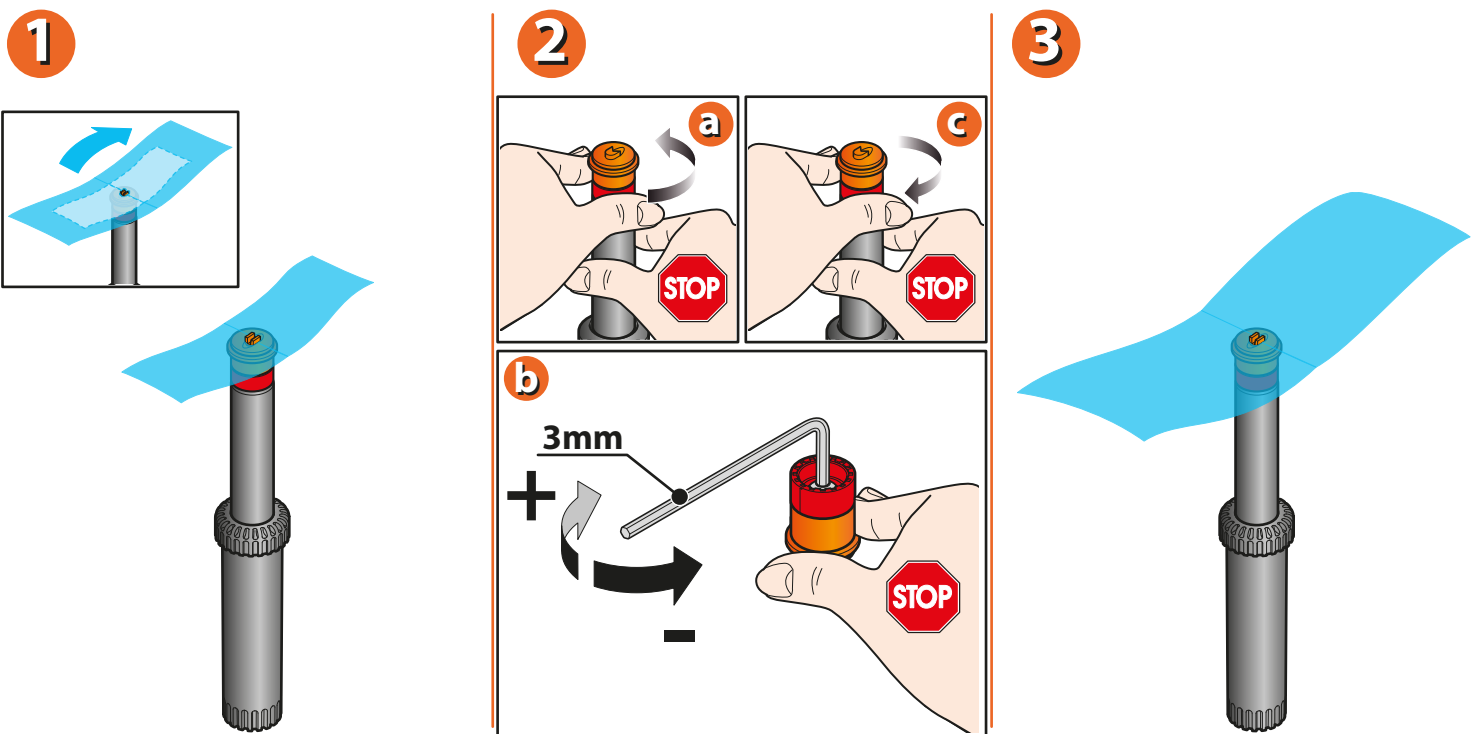


SETTING THE DIRECTION OF THE JET. This operation is required to vary the direction of the spray jet, and must be carried out with the system in operation. Hold the body of the pop-up sprinkler fast with one hand, and turn the stem with the other.



For Pop-Up (cod.): 90109

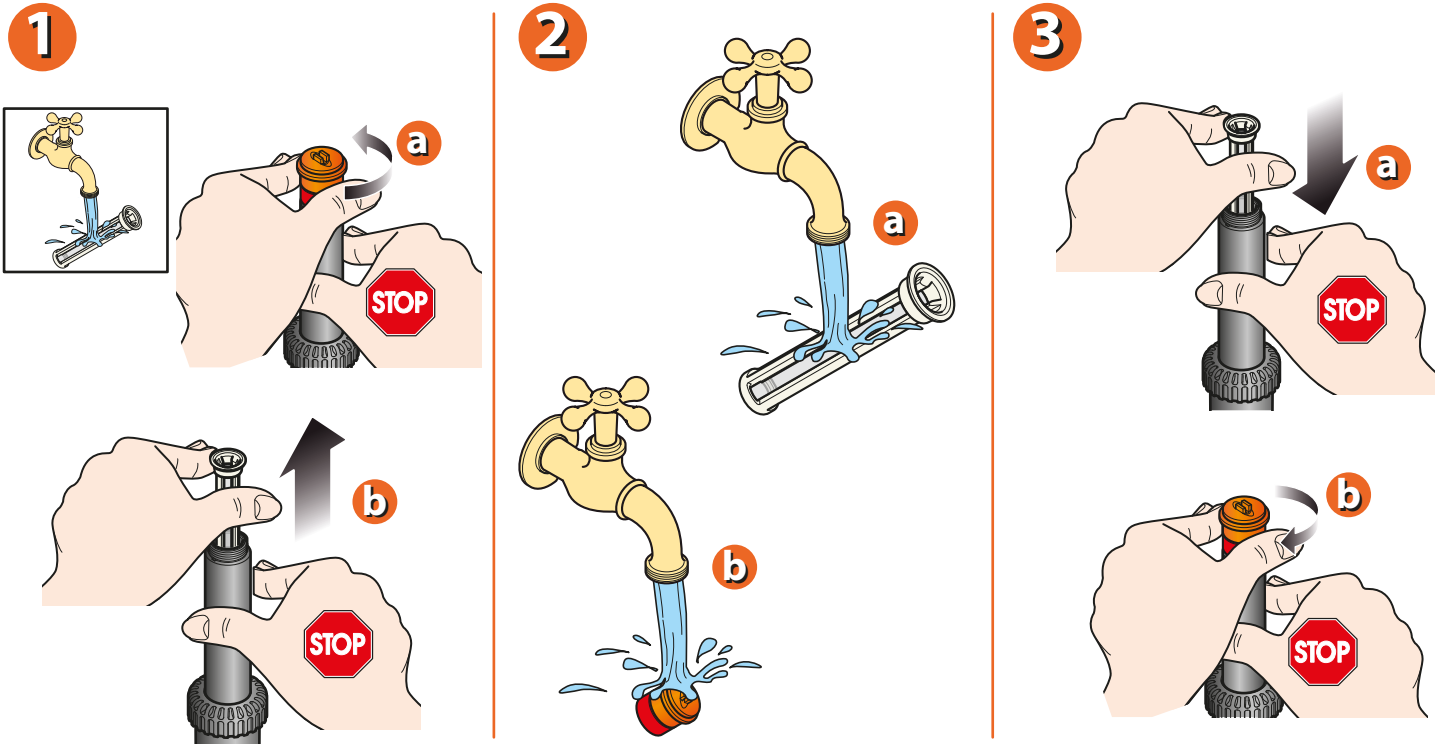
ADJUSTING THE RANGE. To increase or reduce the length of the jet, just a few simple steps are required. Unscrew the sprinkler head and, using a 3mm hex socket key, turn the internal adjuster screw anticlockwise for a shorter jetw, or clockwise for a longer one.



For Pop-Up (cod.): 90109


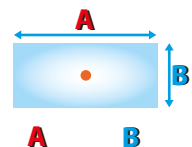
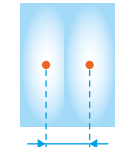
Should the head become fouled by grit, sand, soil or other dirt, proceed as follows:

- holding the stem with one hand, unscrew the upper part
- take out the filter and clean it, together with the upper part of the sprinkler, under running water
- reposition the filter and reassemble the upper part of the sprinkler.



For Pop-Up (cod.): 90109

Tables indicating water usage of sprinklers.

Pop-Up centre-strip (cod.): 90109				20,3 m ²
Bar	l/min	m ²		
1,5	6,8	13,2	12,0 x 1,1 m	1,2 m
2,0	8,3	17,2	13,2 x 1,3 m	1,2 m
3,0	10,2	20,3	13,5 x 1,5 m	1,2 m

For Pop-Up (cod.): 90109