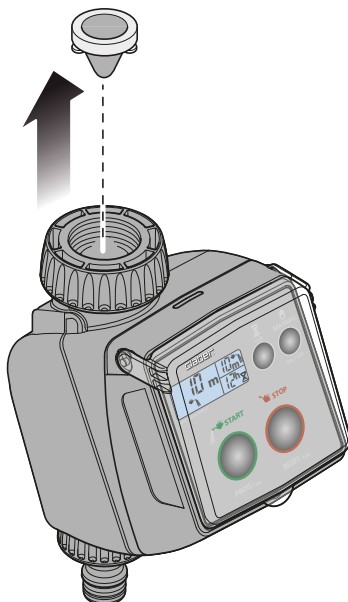
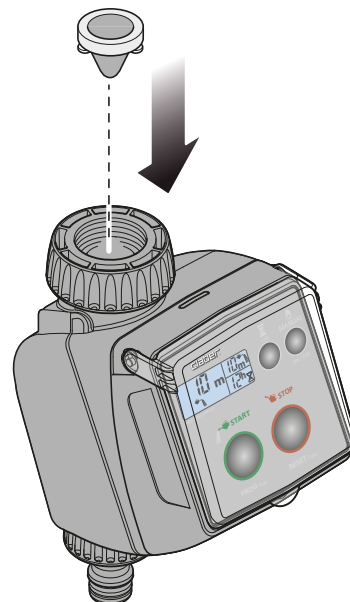


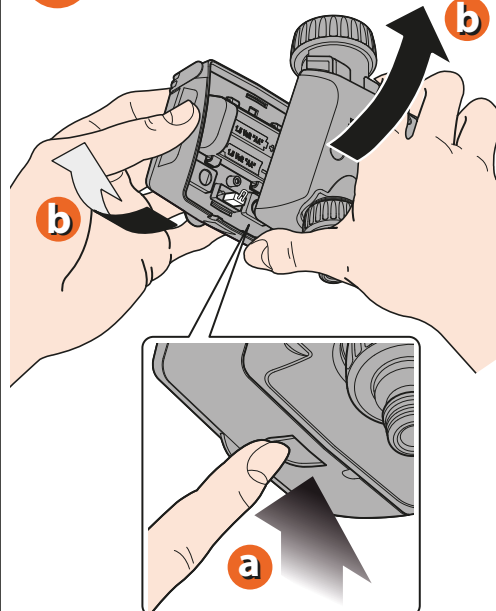
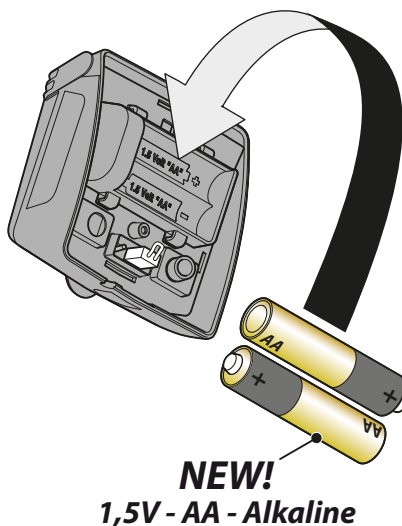
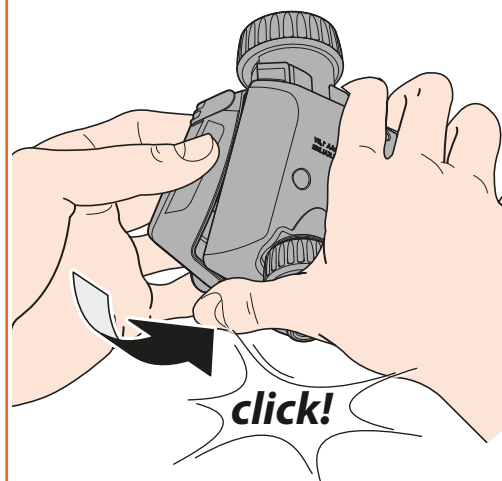
CLEANING THE FILTER. The timer is protected by a wire mesh filter that ensures long-lasting and trouble-free operation. The filter should be inspected periodically and washed at the start of each season. Simply remove the filter from the connector and rinse clean under running water.

1

2

3


For Tempo Pratic (code): 8489

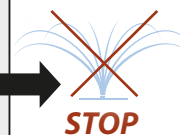
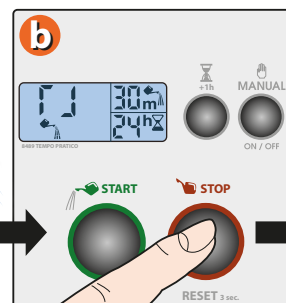
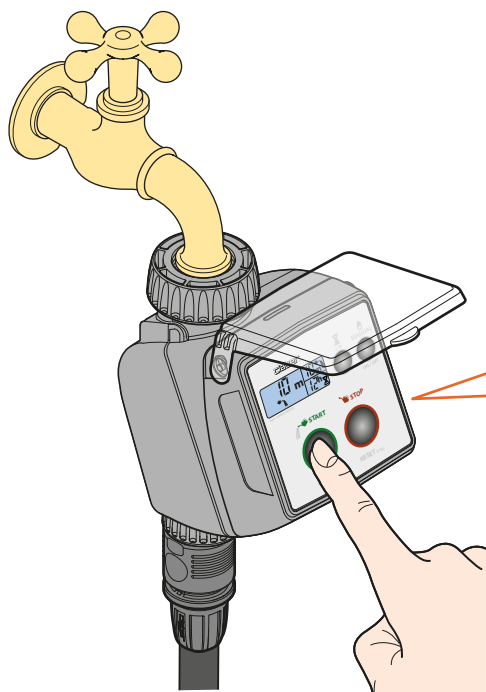
FITTING/REPLACING THE BATTERIES. To fit or replace the batteries, press the bottom locking tab fully in to release the front part of the timer, which can then be detached. Fit 2 new batteries in the holder, observing the correct polarity. As long as the batteries are replaced within 2 minutes, the current settings will remain stored; if not, the timer must be reprogrammed. Refit the front part of the timer to the back and press, ensuring that the locking tab clicks into place. Important: always replace the batteries at the start of each season! Remember to turn on the water tap!

1

2

3


For Tempo Pratic (code): 8489

PROGRAMMING WITH "PILOT" WATERING CYCLE.

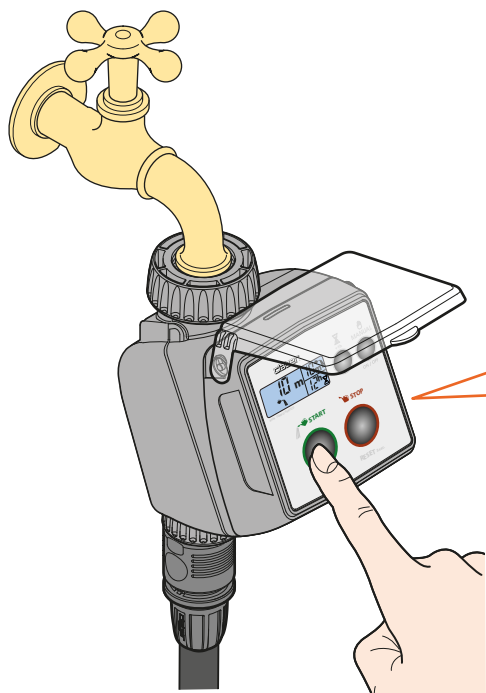
Press any button once to light up the display. **a** Press the  **START** button to start watering. **b** Once watering is sufficient (maximum 60 minutes), press  **STOP** to shut off the flow. The timer will memorize the number of minutes that have elapsed and repeat the programme every day at the same time.



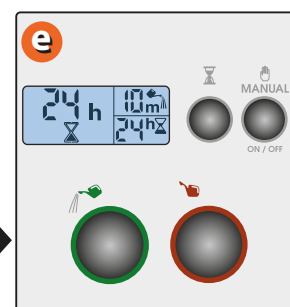
For Tempo Pratic (code): 8489

PROGRAMMING WITH SELECTION OF RUN TIME.

Press any button once to light up the display. **a** Press the  **START** button and hold it for 3 seconds. **b** Release the button when the message PR appears. **c** Press  **START** repeatedly, until the required watering time (e.g. 10 minutes) appears in display field "B". **d** Press  **STOP** to confirm the set time.



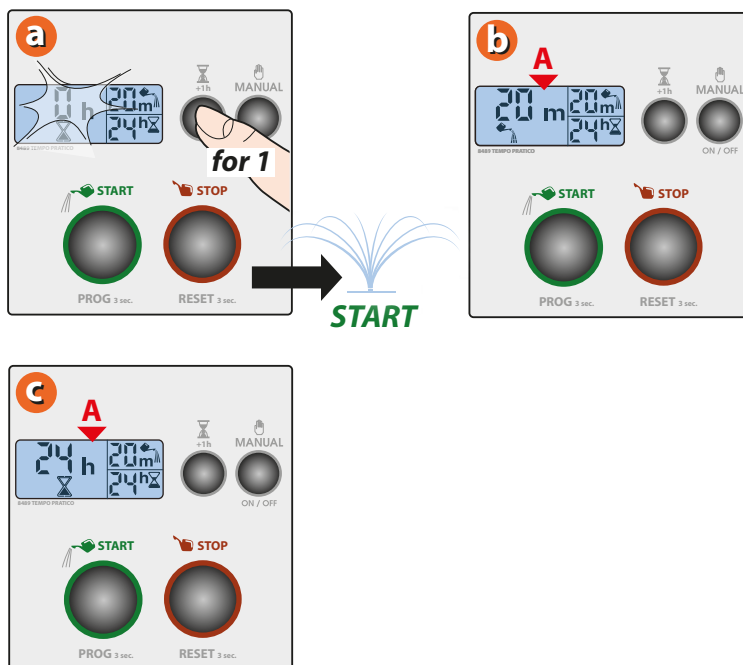
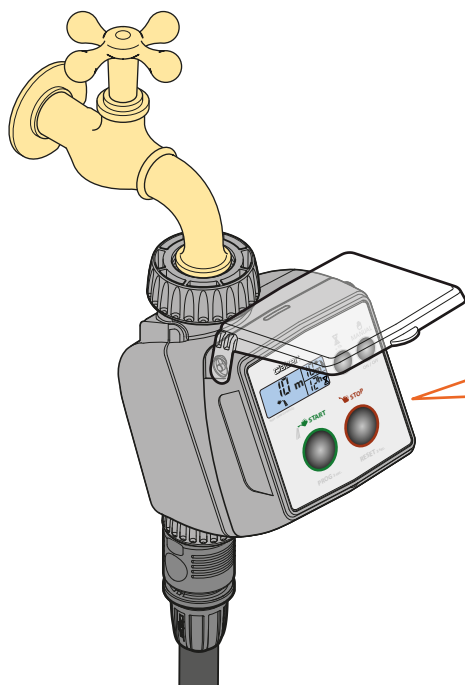
for 9



For Tempo Pratic (code): 8489

Immediate start

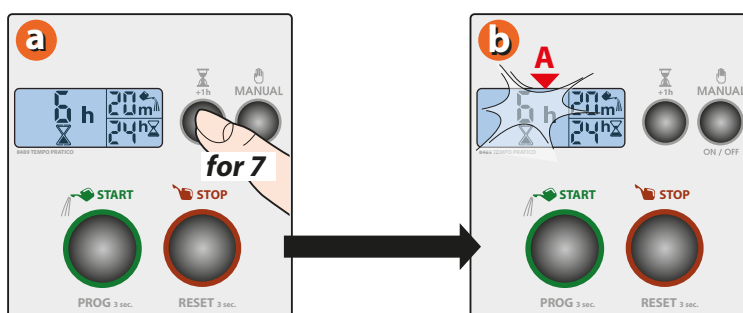
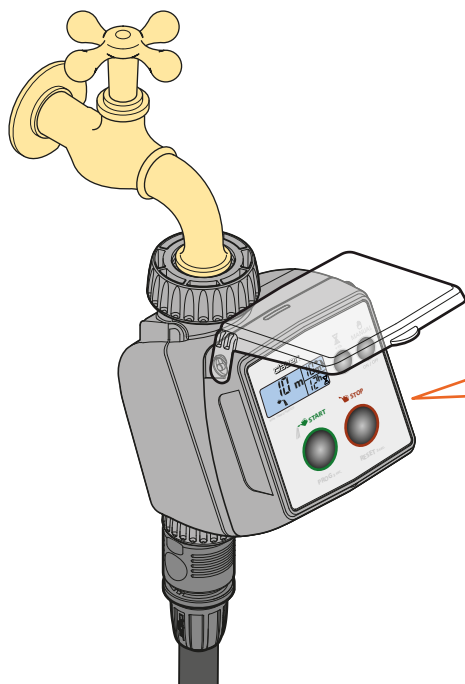
a After selecting the programme, press the "+1h" button once only. Releasing the button, the message "0 h" blinks 3 times on the display, and the automatic watering cycle will start immediately. **b** The watering-in-progress symbol (watering can) appears in display field "A", together with the time remaining until the end of the cycle. **c** At the end of the cycle, display field "A" shows the hourglass symbol together with the time remaining until the start of the next watering cycle.



For Tempo Pratic (code): 8489


Delayed start

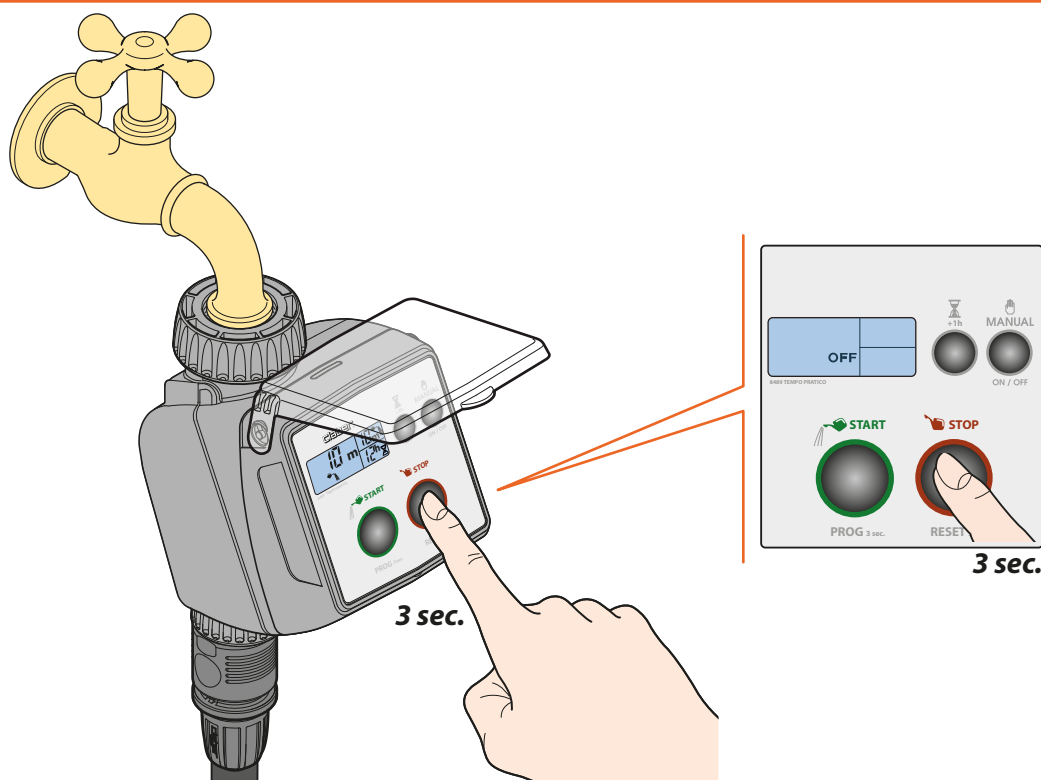
a After selecting the programme, press the "+1h" button repeatedly until display field "A" shows the required delay, between 1 and 23 hours, before the start of the automatic watering cycle (e.g. 6 hours). **b** Release the button, the number of hours will blink 3 times and the countdown to the start of the next watering cycle will begin, as shown in display field "A" above the symbol (hourglass).



For Tempo Pratic (code): 8489



Change the watering programme


To delete the programme set, press the  **STOP** button and hold it for 3 seconds until the message "OFF" appears on the display. Once the programme has been deleted, a new one can be set.

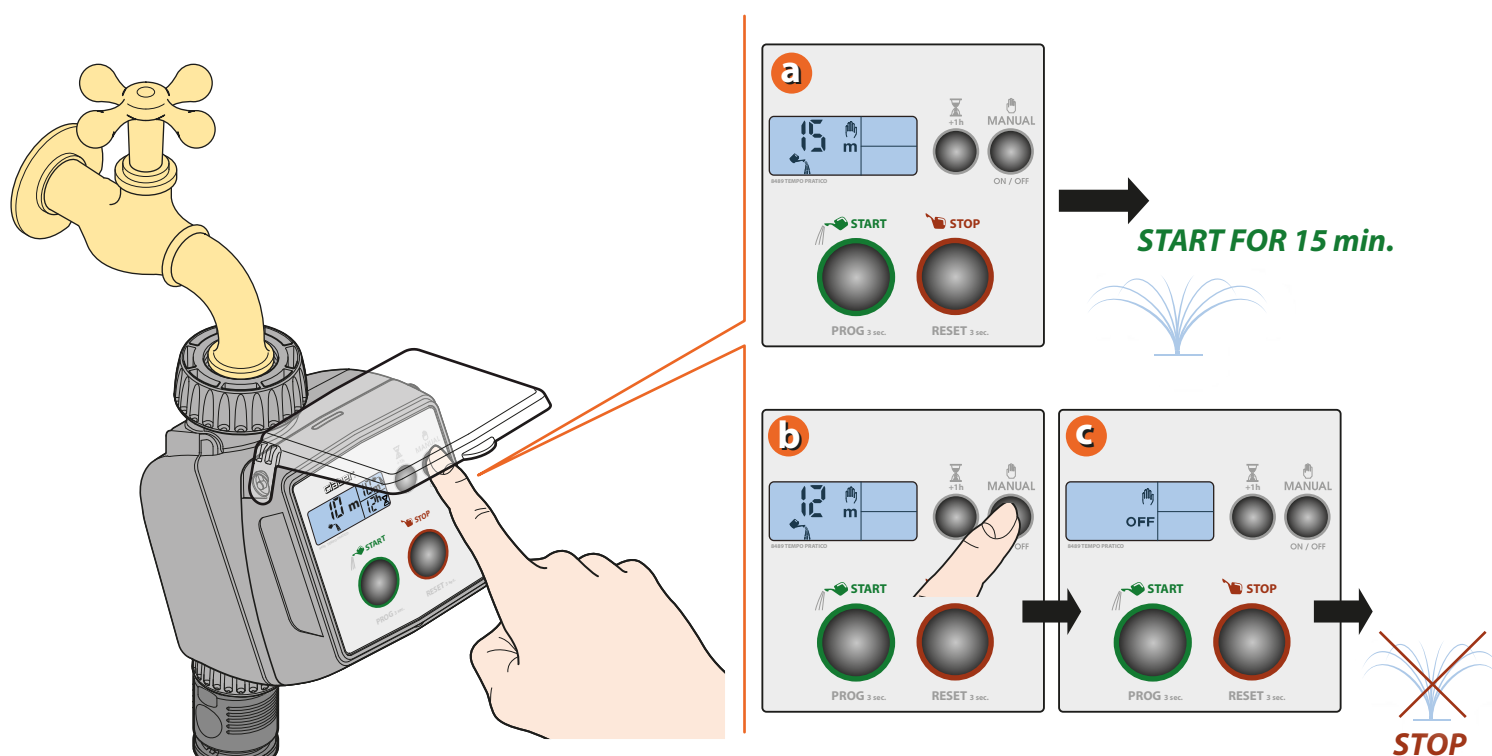


For Tempo Pratic (code): 8489

MANUAL WATERING


Press the  button; watering will start after few seconds and will last for 15 minutes (this setting cannot be changed by the user). The watering-in-progress symbol is displayed  (watering can).

To stop watering before 15 minutes have elapsed, press the  button a second time.

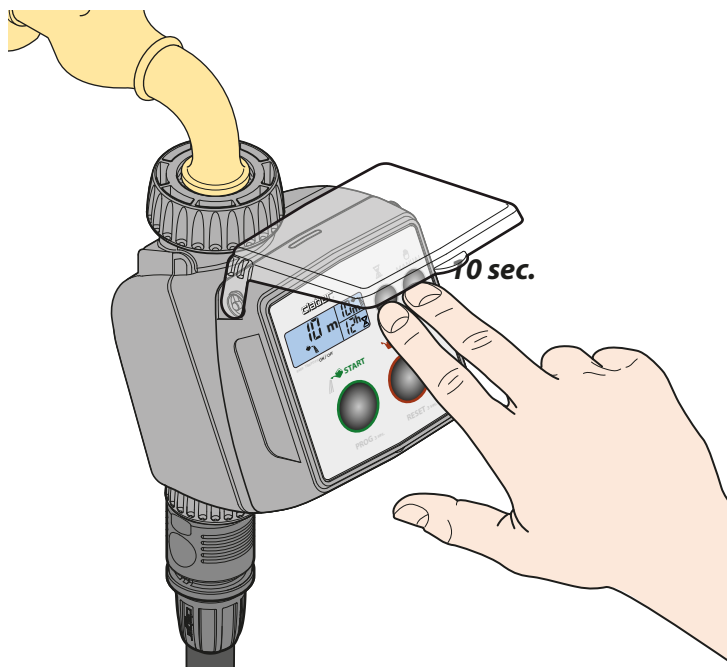


For Tempo Pratic (code): 8489

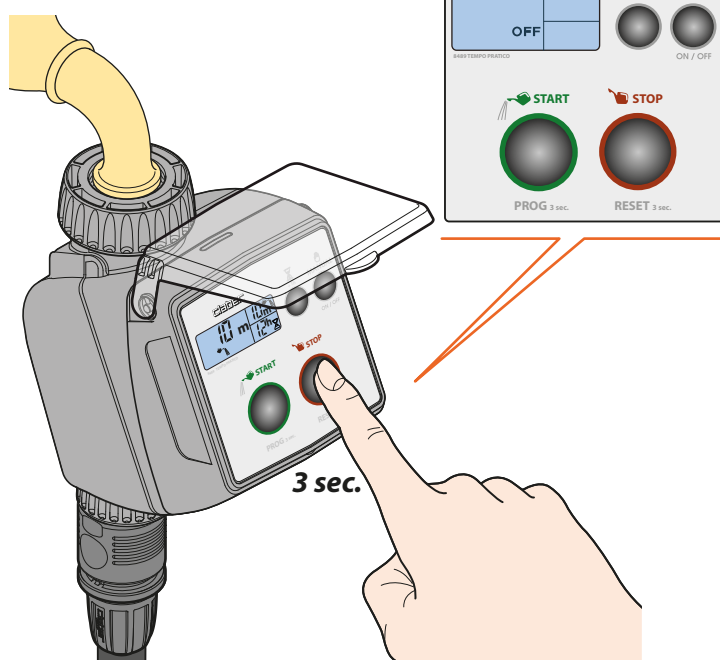
FACTORY SETTINGS. The factory settings of the timer can be restored by pressing the "MANUAL" and "+1h" buttons simultaneously and holding them for at least 10 seconds.

SWITCHING OFF. If the timer needs to be switched off, for example to store it indoors during winter, press  **STOP** and hold it for 3 seconds. The message "OFF" appears on the display.

1 FACTORY SETTINGS



2 SWITCHING OFF



For Tempo Pratic (code): 8489

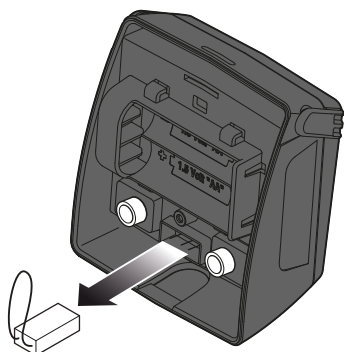
RAIN SENSOR. The timer can be connected to a Rain Sensor, by wire or by radio. When the level of water in the Rain Sensor rises above 5 mm, the watering programme will be suspended automatically, then resumed once the rainwater in the cup has evaporated.

Installation. Remove the protective jumper from the rain sensor contacts (no tools are needed). If the Rain Sensor is not going to be used, the jumper must remain in place across the contacts.

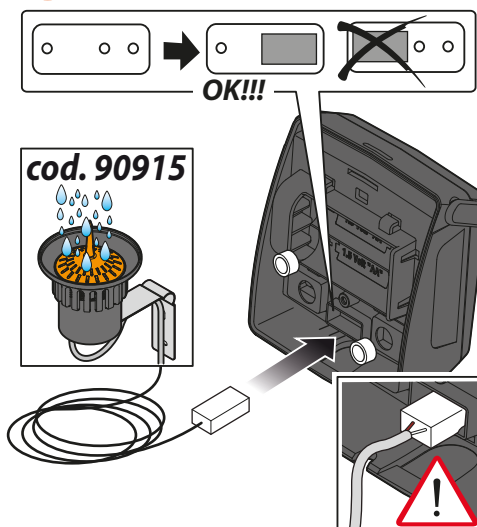
Wired Rain Sensor. Fit the connector of the sensor lead. Check that the two-core cable enters the timer by way of the slot provided in the bottom part of the housing.

RF Rain Sensor. Install the RF Rain Sensor Interface, routing the wire antenna through the relative clips.

1



2 RAIN SENSOR



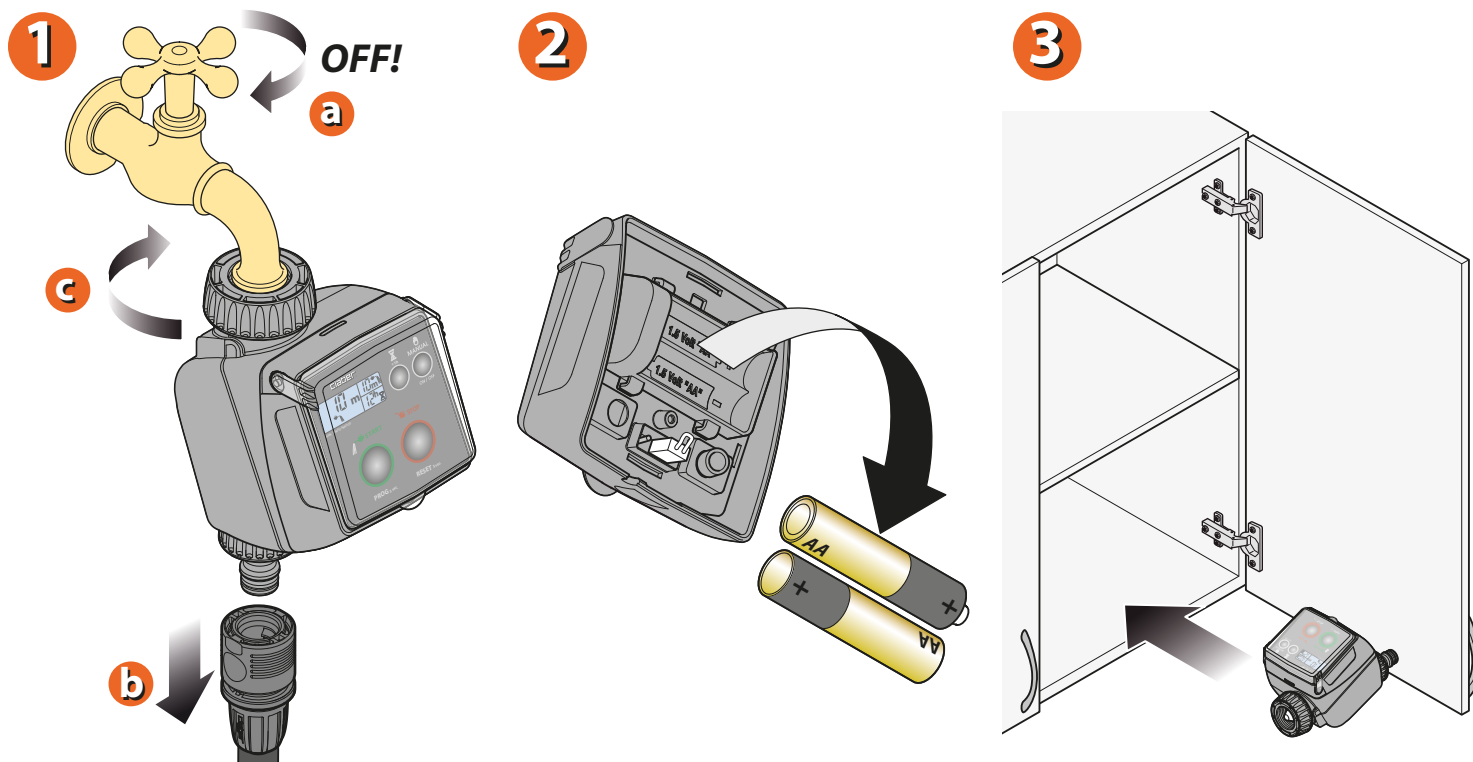
3 RAIN SENSOR RF



For Tempo Pratic (code): 8489

PROTECTION IN WINTER.

At the end of the watering season and before winter, disconnect the timer from the tap, remove the batteries and store the device indoors, protected from frost and damp. This will ensure that the timer remains as good as new for many years to come.



For Tempo Pratic (code): 8489

For further information, please refer to the instruction manual supplied with the product.