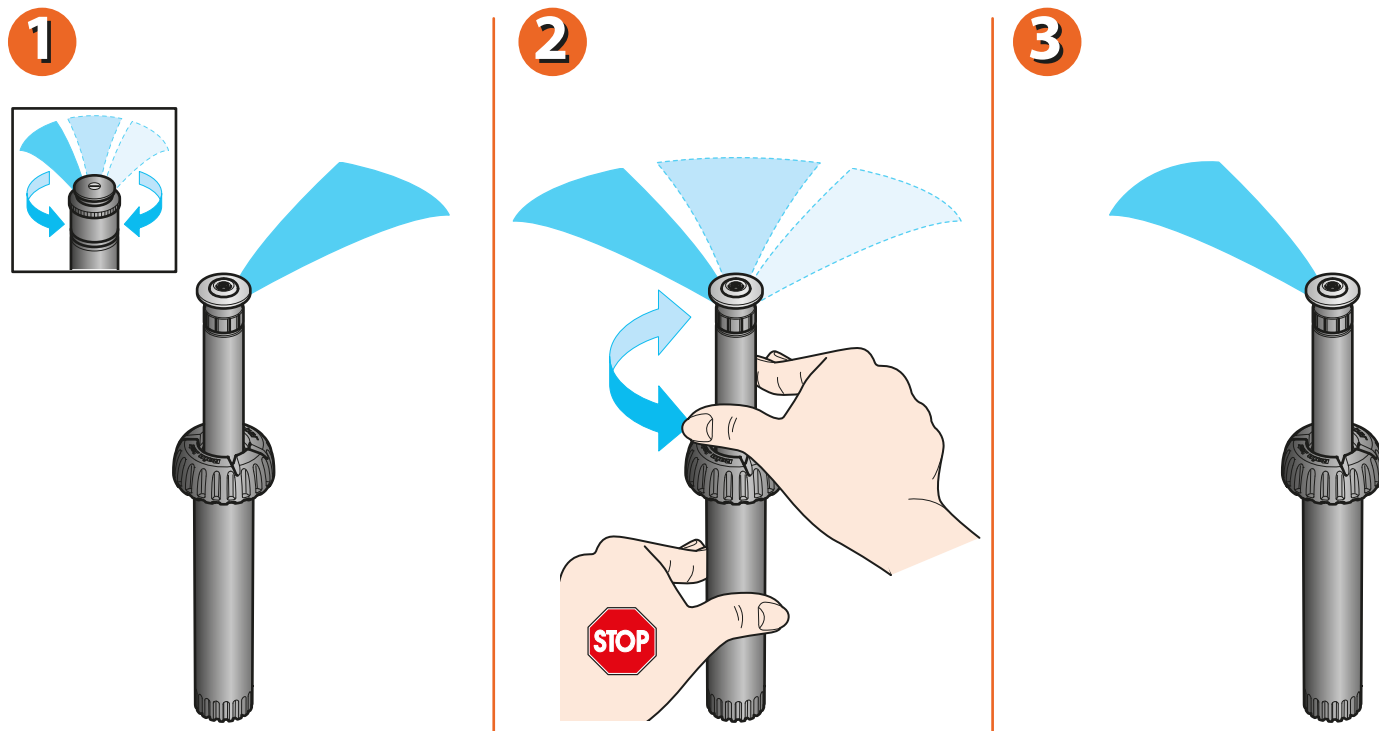


CHANGE THE DIRECTION OF THE JET. This operation serves to vary the direction of the sprinkler jet, and must be carried out with the system in operation. Proceed as follows:

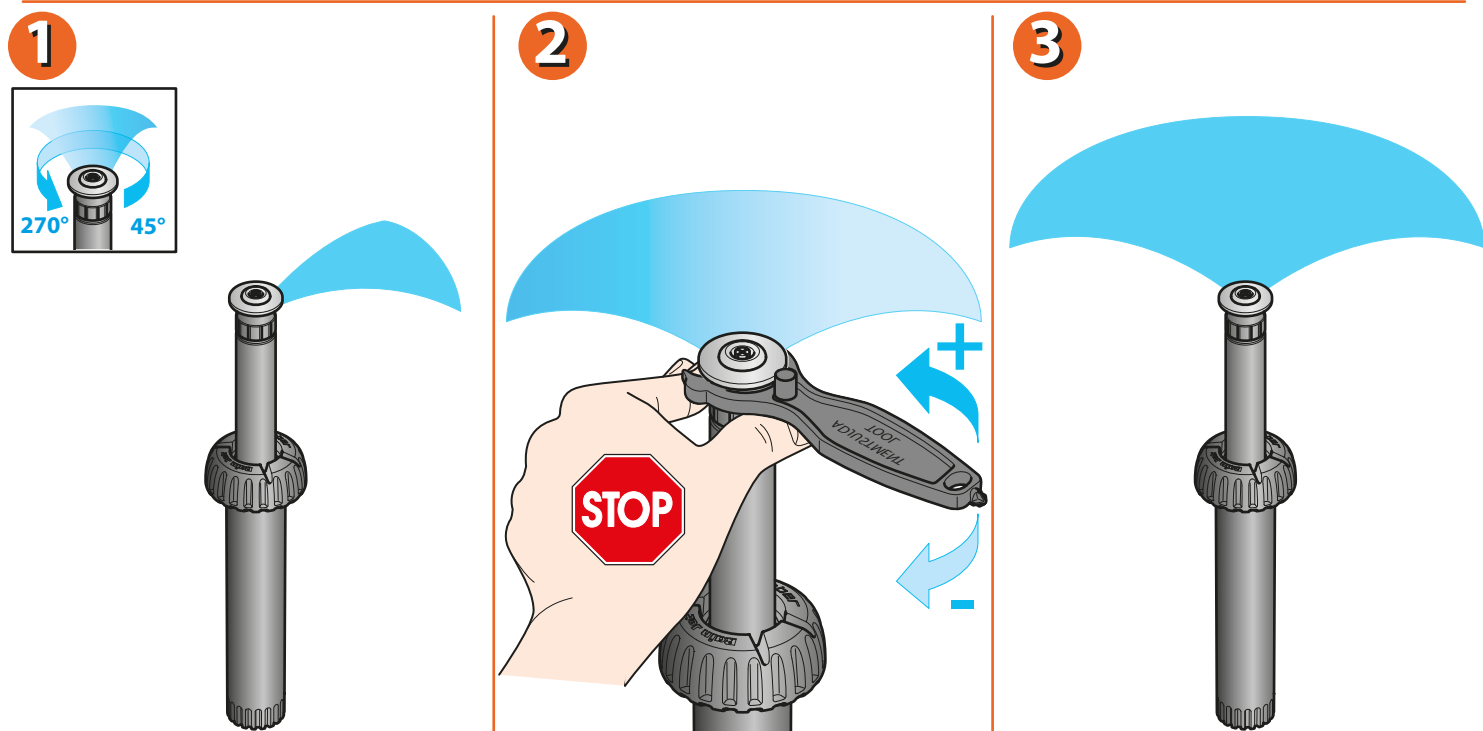
- turn the stem of the sprinkler while holding the body fast.



For Turbo Jet 45° - 270° (cod.): 90260

For Turbo Jet 360° (cod.): 90262

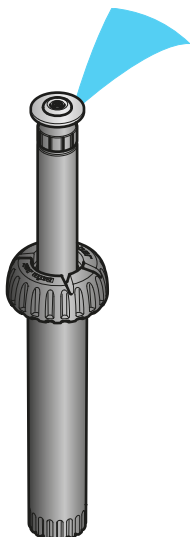
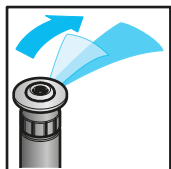
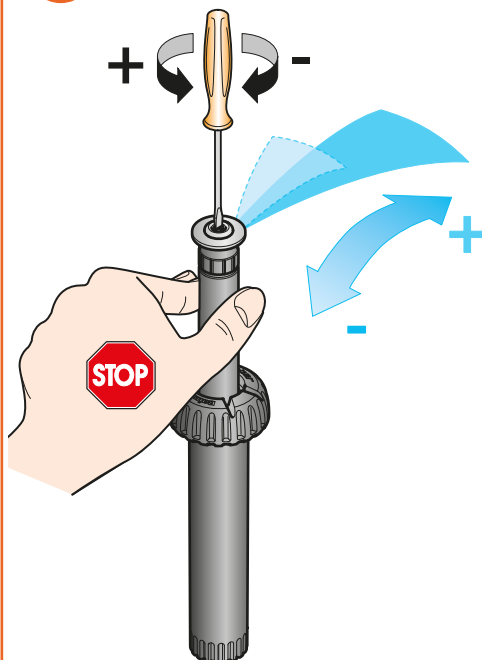
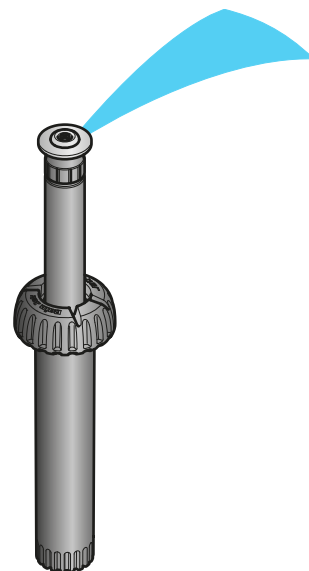
ADJUSTMENT OF SPRAY ANGLE BETWEEN 45° AND 270°. This adjustment serves to increase or reduce the coverage of the sprinkler. Using the key provided, turn the collar located under the sprinkler head, which is marked with symbols for adjustment purposes. To select the required working angle, hold the sprinkler head (marked with the symbol "R") and the stem fast, and turn the collar anticlockwise to increase the coverage, or clockwise to reduce it.



For Turbo Jet 45° - 270° (cod.): 90260

ADJUSTMENT OF JET RANGE. This adjustment serves to increase or reduce the length of the sprinkler jet. Proceed as follows:

- turn the water on, and engage the screw on the sprinkler head with a suitable screwdriver;
- turn anticlockwise for a longer jet, or clockwise for a shorter one.

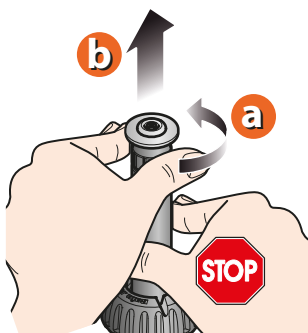
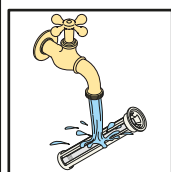
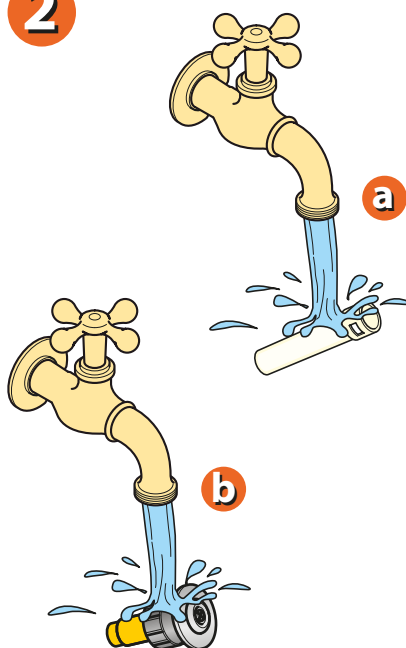
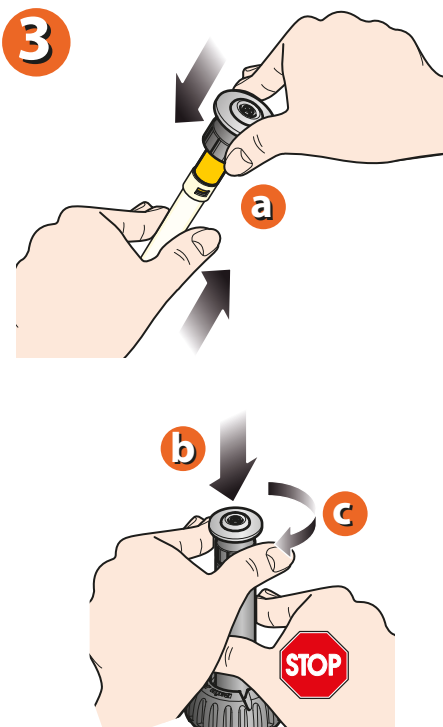
1

2

3


For Turbo Jet 45° - 270° (cod.): 90260

For Turbo Jet 360° (cod.): 90262

Should the turbine become fouled by grit, sand, soil or other dirt, proceed as follows:



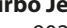


- holding the sprinkler collar fast with one hand, unscrew the upper part;
- take out the filter and clean it, together with the upper part of the sprinkler, under running water;
- reposition the filter and reassemble the upper part of the sprinkler.




1

2

3


For Turbo Jet 45° - 270° (cod.): 90260

For Turbo Jet 360° (cod.): 90262

Tables indicating water usage of sprinklers.

Turbo Jet (cod.): 90260												 45° - 270°	
													
Bar	l/min	m²		l/min	m²		l/min	m²		l/min	m²		
1,5	1,45	9,61	4,0	5,9 m	2,95	19,23	3,5	4,9 m	4,40	28,84	3,0	4,9 m	
2,0	1,83	15,89	5,0	7,0 m	3,85	31,79	5,0	7,0 m	5,33	47,68	4,0	6,0 m	
3,0	2,40	28,26	6,5	9,0 m	4,80	56,52	6,0	8,4 m	7,07	84,78	5,5	8,4 m	

Turbo Jet (cod.): 90262  360°				
Bar	l/min	m²		
1,5	6,40	38,46	3,5 m	4,9 m
2,0	8,40	63,58	4,5 m	6,4 m
3,0	11	113,04	6,0 m	8,4 m

For Turbo Jet 45° - 270° (cod.): 90260

For Turbo Jet 360° (cod.): 90262