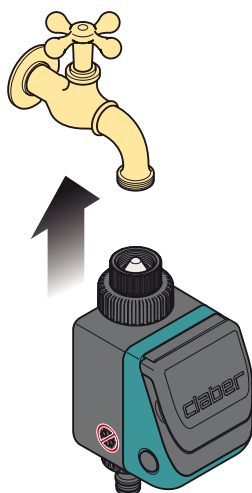
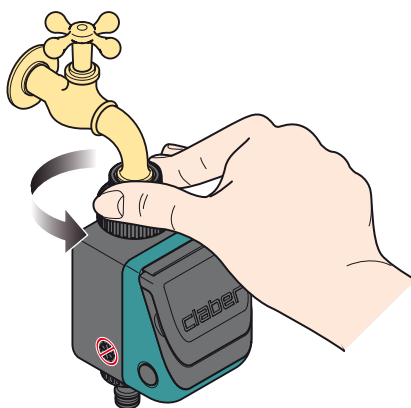


Connect the timer to the tap.

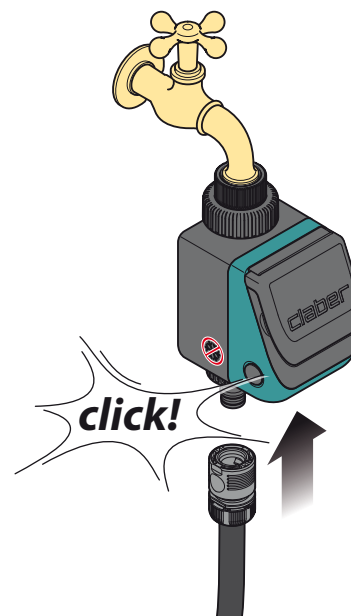
1



2



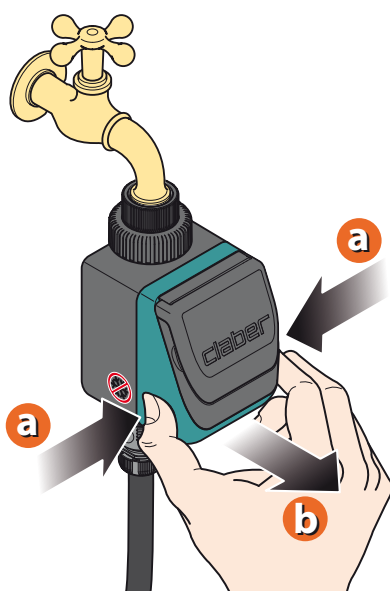
3



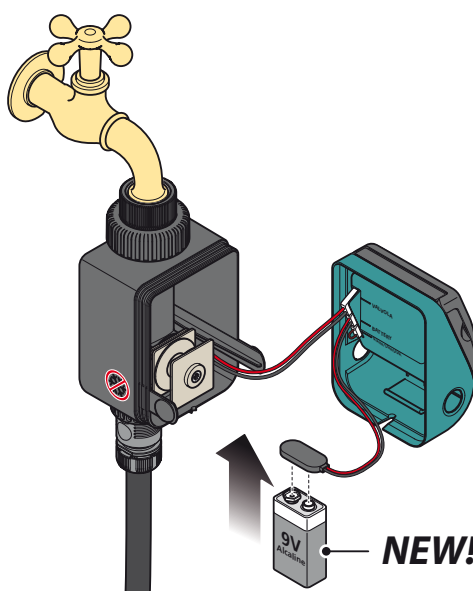
For Aquauno Logica Balcony (p/n): 8446
For Aquauno Logica Balcony Plus (p/n): 8415

Open the timer unit by pressing the two buttons on the sides, and fit a 9V alkaline battery.
Important: remember to turn on the water tap!

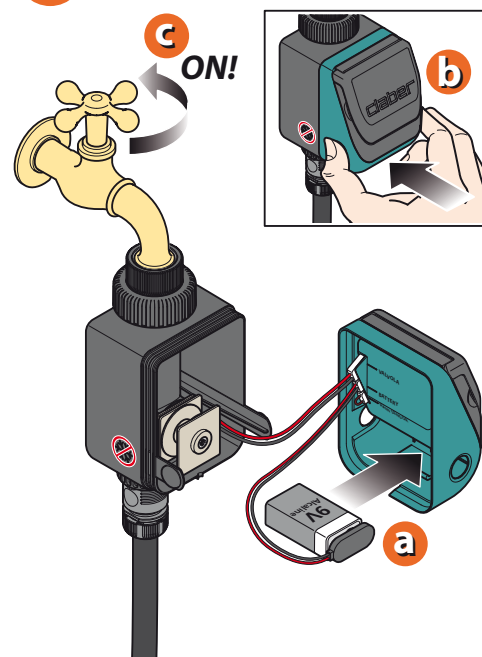
1



2

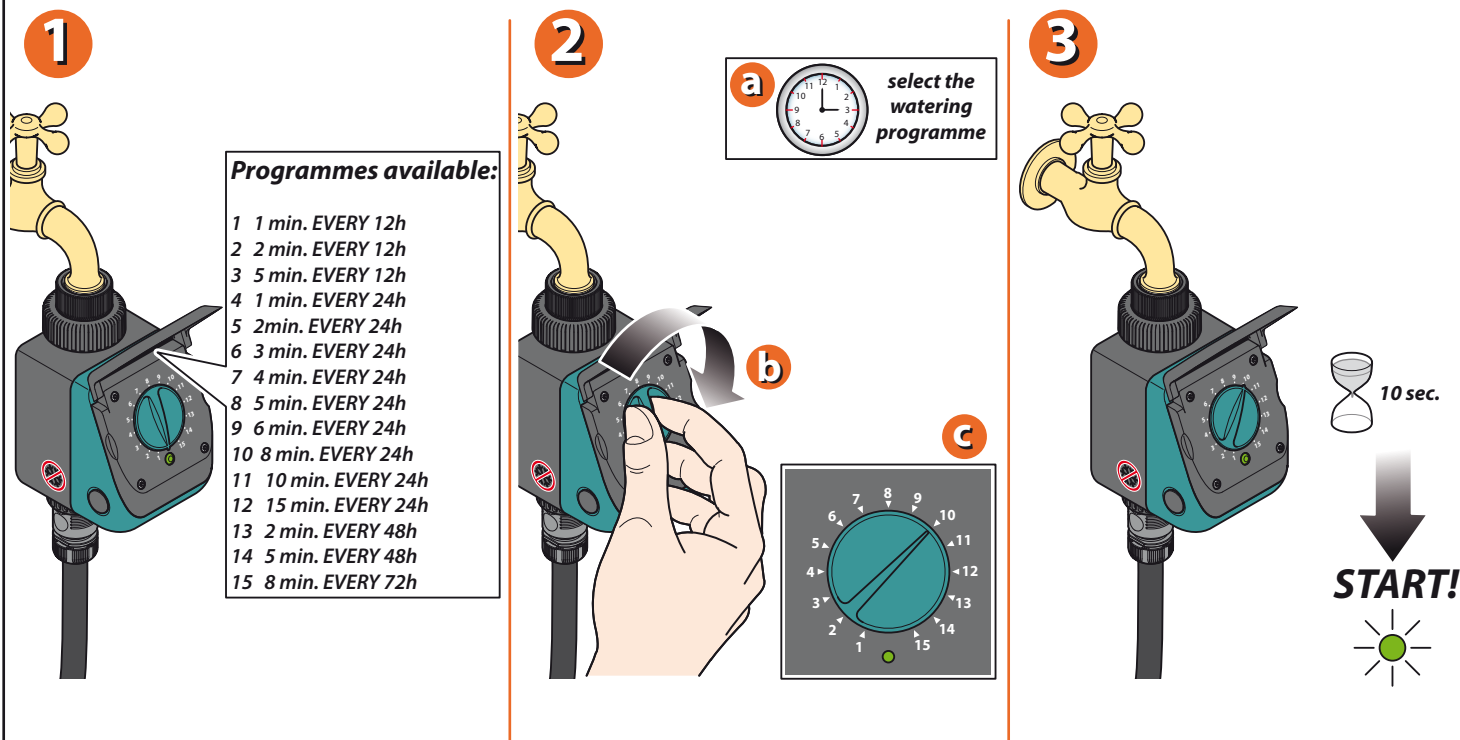


3



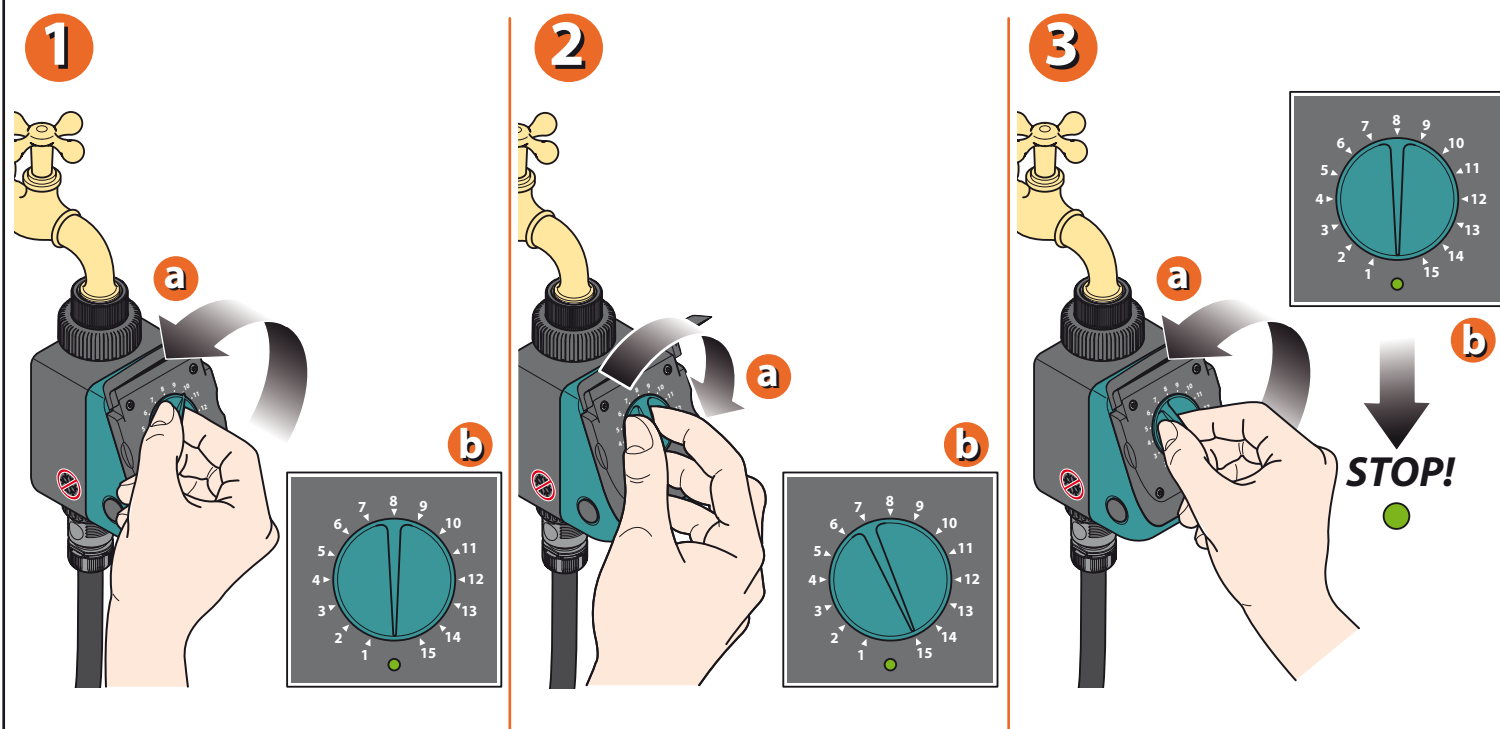
For Aquauno Logica Balcony (p/n): 8446
For Aquauno Logica Balcony Plus (p/n): 8415

Select the required watering cycle by simply turning the knob to one of the 15 preset programmes. The descriptions of the different programmes are listed on the protective cover. The selected programme starts after 10 seconds. A Led will blink during the operation of the timer.



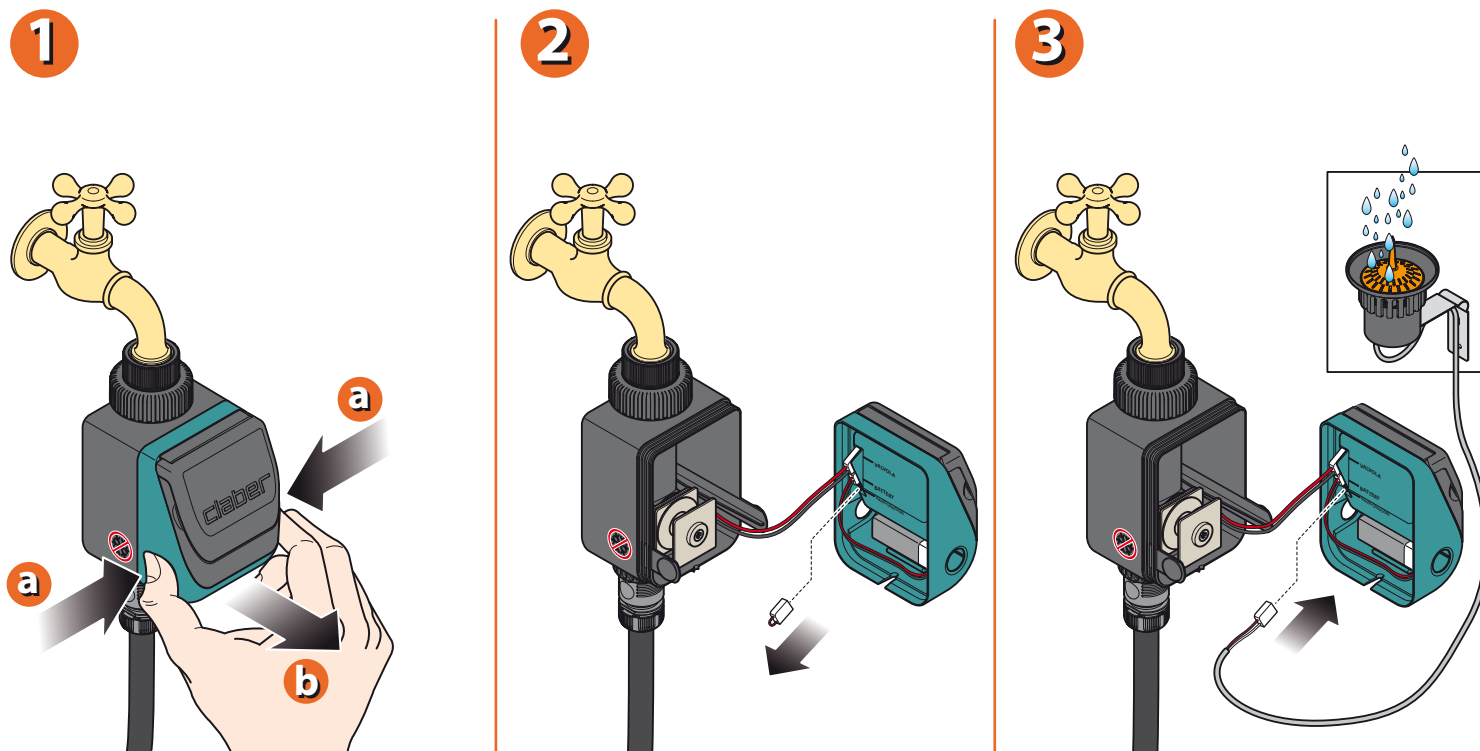
For Aquauno Logica Balcony (p/n): 8446
For Aquauno Logica Balcony Plus (p/n): 8415

The programme can be changed anytime by turning the knob to "0", then positioning it on another number. Positioning the knob at "0", the programme currently running will be cancelled



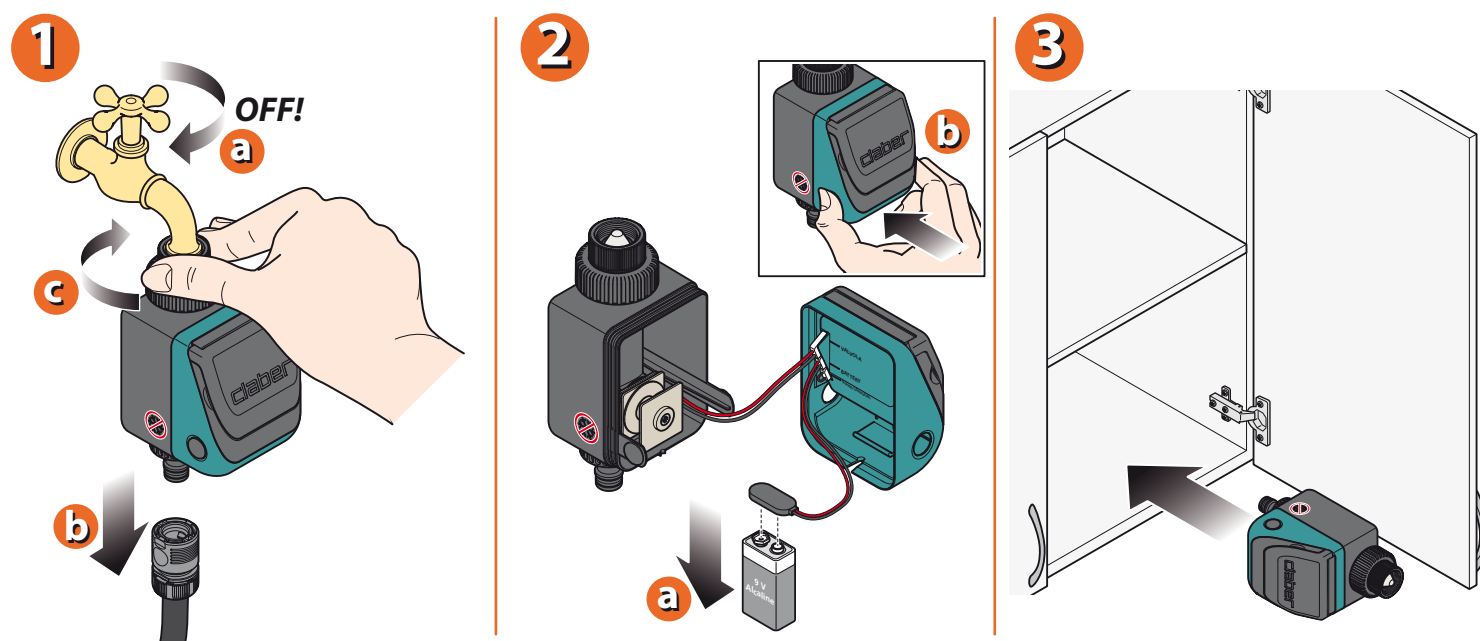
For Aquauno Logica Balcony (p/n): 8446
For Aquauno Logica Balcony Plus (p/n): 8415

The timer can also be connected to the Rain Sensor, using the socket provided, in which case the protective jumper must be removed.



For Aquauno Logica Balcony Plus (p/n): 8415

At the end of the warm season and before the first winter frosts, disconnect the timer from the tap and store it indoors, bearing in mind to remove the battery.



For Aquauno Logica Balcony (p/n): 8446
For Aquauno Logica Balcony Plus (p/n): 8415

For more information and further details, please consult the instruction manual supplied with the product.