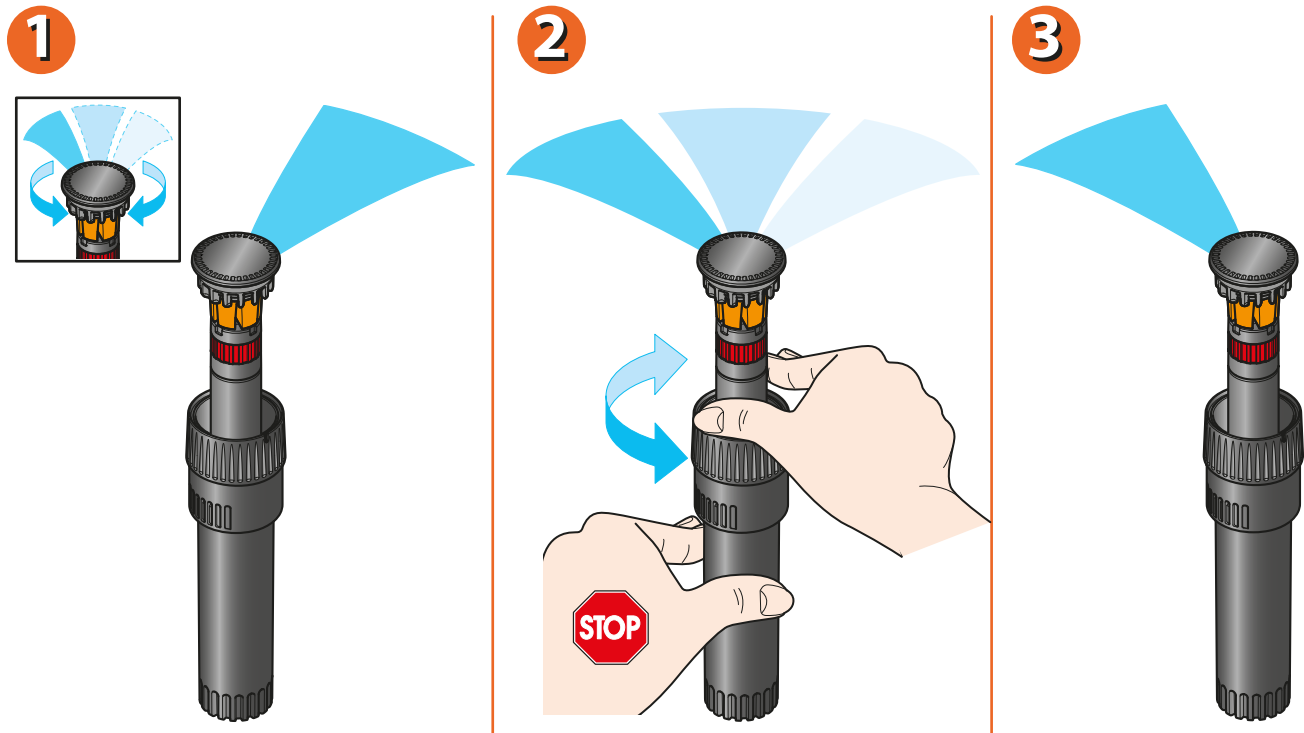
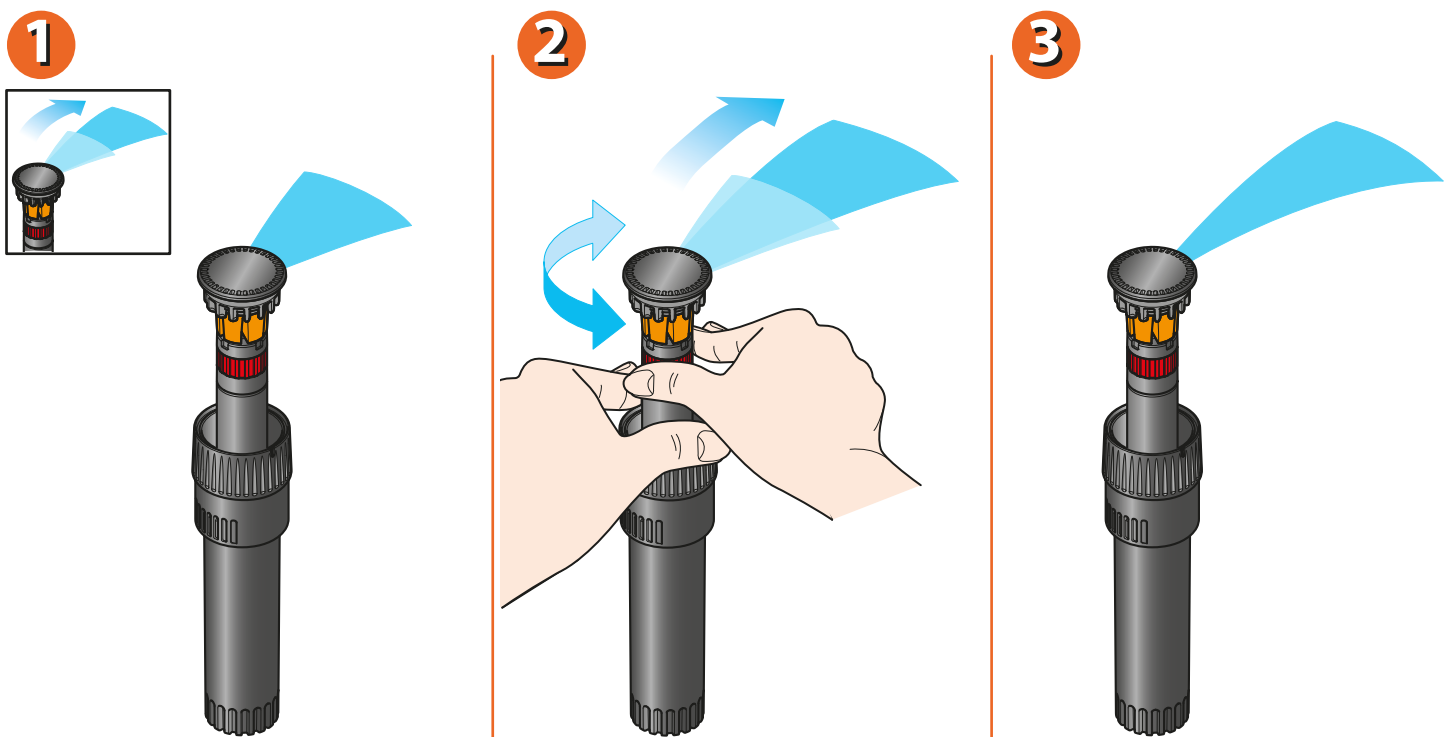


To change the direction of the jet, turn the stem clockwise or anticlockwise while the body of the sprinkler is held fast.
This adjustment must be made while the system is in operation.



For Colibrì Evolution 90° - 180° (cod.): 90230 - 90220

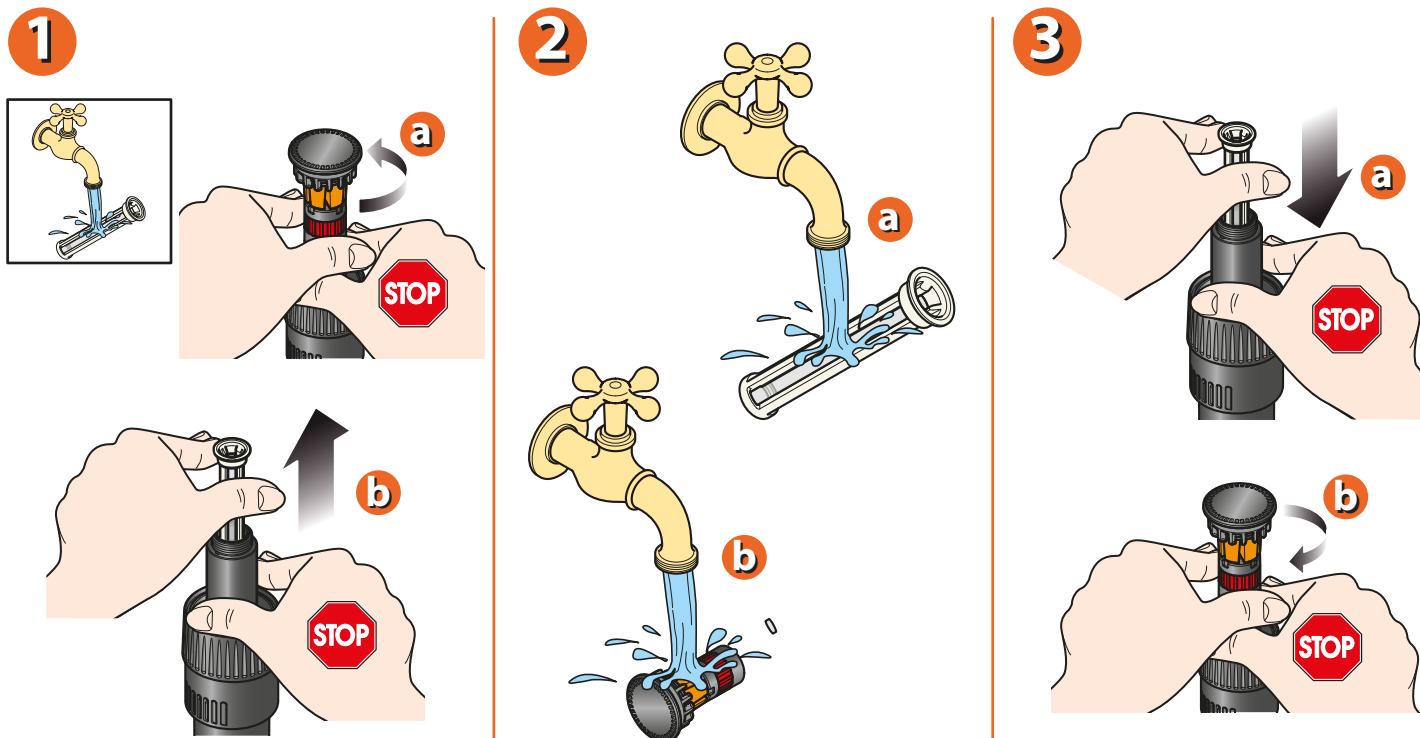
To increase or reduce the length of the jet:
- turn the red ring anticlockwise for a shorter jet or clockwise for a longer one.



For Colibrì Evolution 90° - 180° - 360° (cod.): 90230 - 90220 - 90210

Should the turbine become fouled by grit, sand, soil or other dirt, proceed as follows:

- holding the stem with one hand, unscrew the upper part
- take out the filter and clean it, together with the upper part of the sprinkler, under running water
- reposition the filter and reassemble the upper part of the sprinkler.



For Colibrì Evolution 90° - 180° - 360° (cod.): 90230 - 90220 - 90210

Tables indicating water usage of sprinklers.

	Colibrì 90° (cod.): 90230				
	Bar	l/min	m ²		
	1,5	1,1	13,8	4,2 m	6,0 m
	2,0	1,3	15,9	4,5 m	6,4 m
	3,0	1,5	17,3	4,7 m	6,7 m

	Colibrì 180° (cod.): 90220				
	Bar	l/min	m ²		
	1,5	1,7	25,1	4,0 m	5,7 m
	2,0	2,0	31,8	4,5 m	6,4 m
	3,0	2,3	34,7	4,7 m	6,7 m

	Colibrì 360° (cod.): 90210				
	Bar	l/min	m ²		
	1,5	3,3	43,0	3,7 m	5,3 m
	2,0	3,7	55,4	4,2 m	6,0 m
	3,0	4,2	63,6	4,5 m	6,4 m

For Colibrì Evolution 90° - 180° - 360° (cod.): 90230 - 90220 - 90210