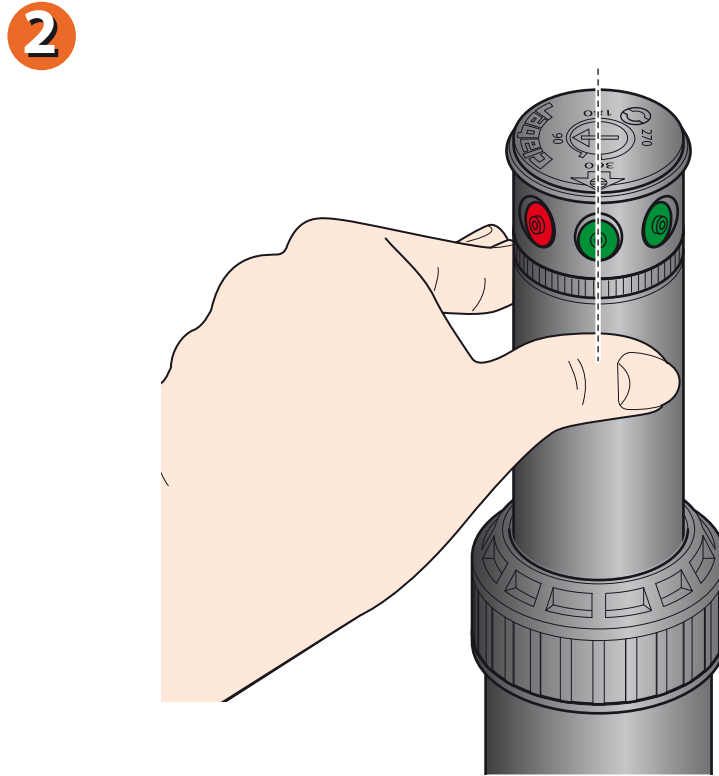
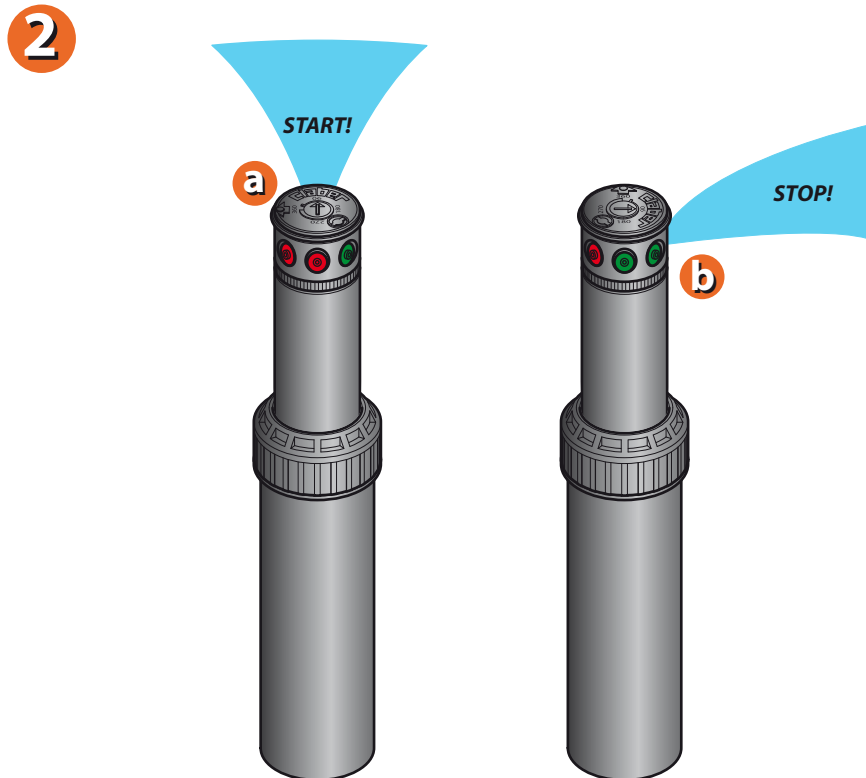
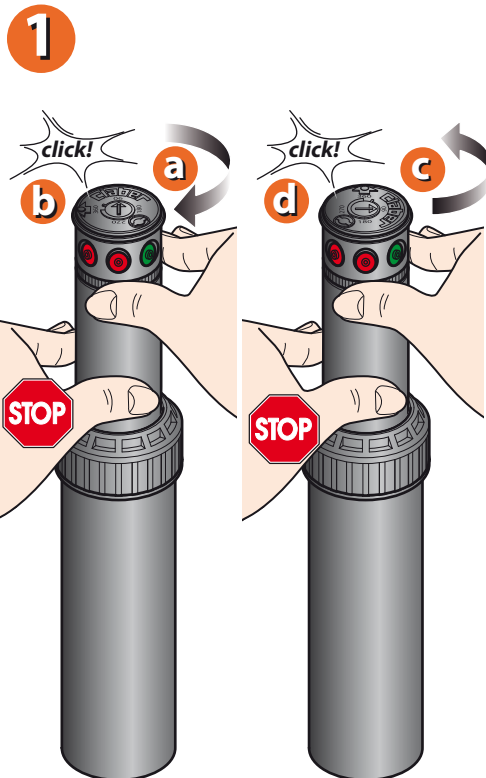


Select the nozzle by inserting the Claber key, or a flat head screwdriver, in the slot on the top of the turbine. Turn the key or screwdriver to the point at which the required nozzle is in line with the arrow on the rim.



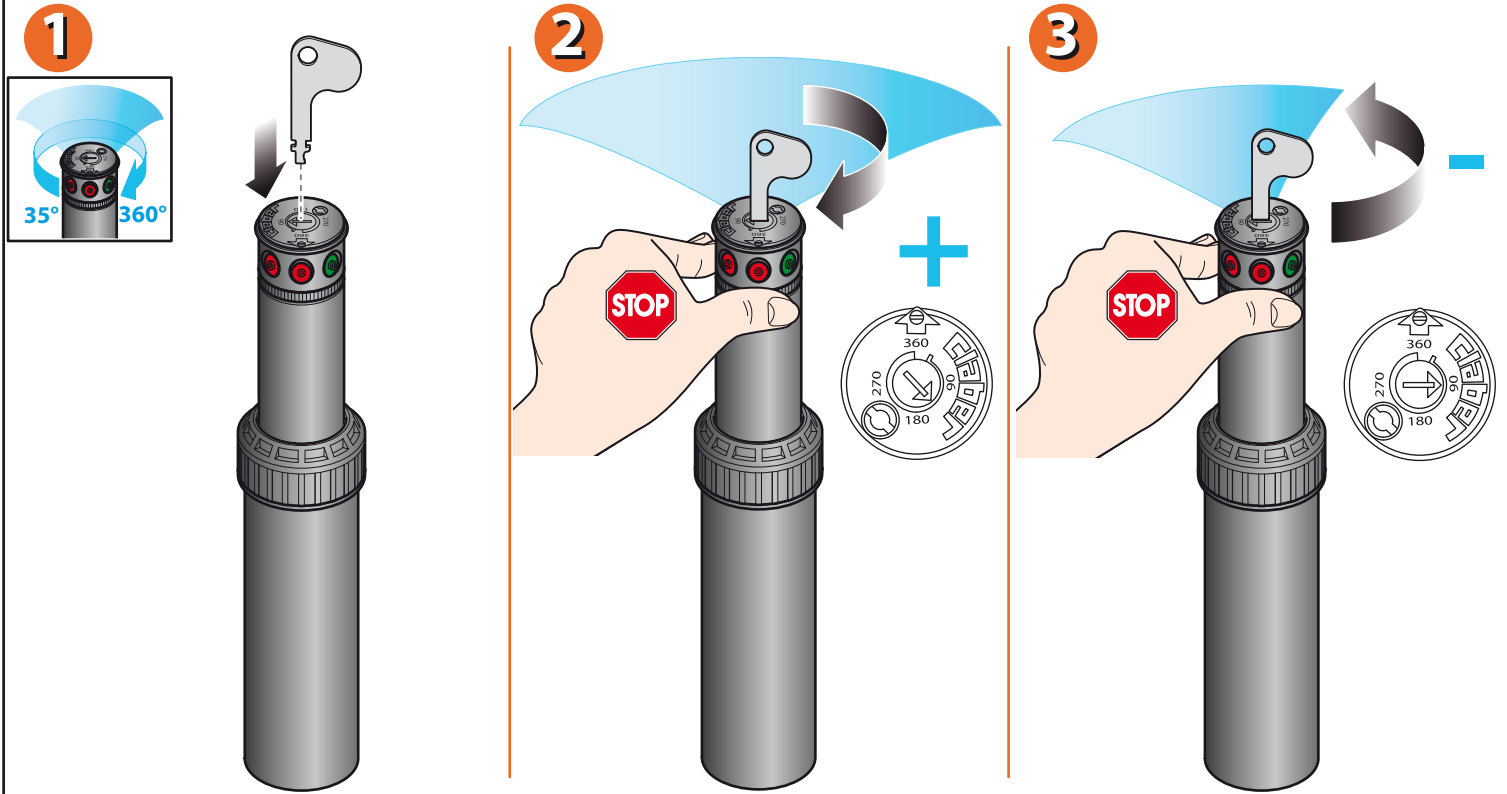
Multijet turbine sprinkler (p/n): 90139

Rotate the turret clockwise using thumb and forefinger, without forcing, to reach the "stop" position; now rotate anticlockwise as far as the limit in the opposite direction. The sprinkler will begin to operate, spinning clockwise.



Multijet turbine sprinkler (p/n): 90139

To widen or narrow the sector covered by the sprinkler jet, insert the key in the slot above the arrow, hold the turret fast with one hand, and turn the key clockwise until the arrow is positioned at the required work arc.



Multijet turbine sprinkler (p/n): 90139

Tables indicating water usage of sprinklers.

Multijet turbine sprinkler (p/n): 90139		35°-360°		
Bar		l/min		
2,0	1	3,78	9,1 m	12,9 m
	2	7,57	9,8 m	13,9 m
	3	10,98	10,1 m	14,3 m
	4	15,14	9,8 m	13,9 m
3,0	1	4,54	9,2 m	13,0 m
	2	9,08	10,7 m	15,1 m
	3	12,87	11,0 m	15,6 m
	4	17,41	10,7 m	15,1 m

Multijet turbine sprinkler (p/n): 90139		35°-360°		
Bar		l/min		
2,0	1,5	5,68	11,0 m	15,6 m
	3	11,36	11,9 m	16,8 m
	4,5	15,90	11,3 m	16,0 m
	6	20,06	10,7 m	15,2 m
3,0	1,5	6,81	11,9 m	16,8 m
	3	12,87	12,5 m	17,7 m
	4,5	19,03	12,2 m	17,3 m
	6	24,60	11,9 m	16,8 m

Multijet turbine sprinkler (p/n): 90139