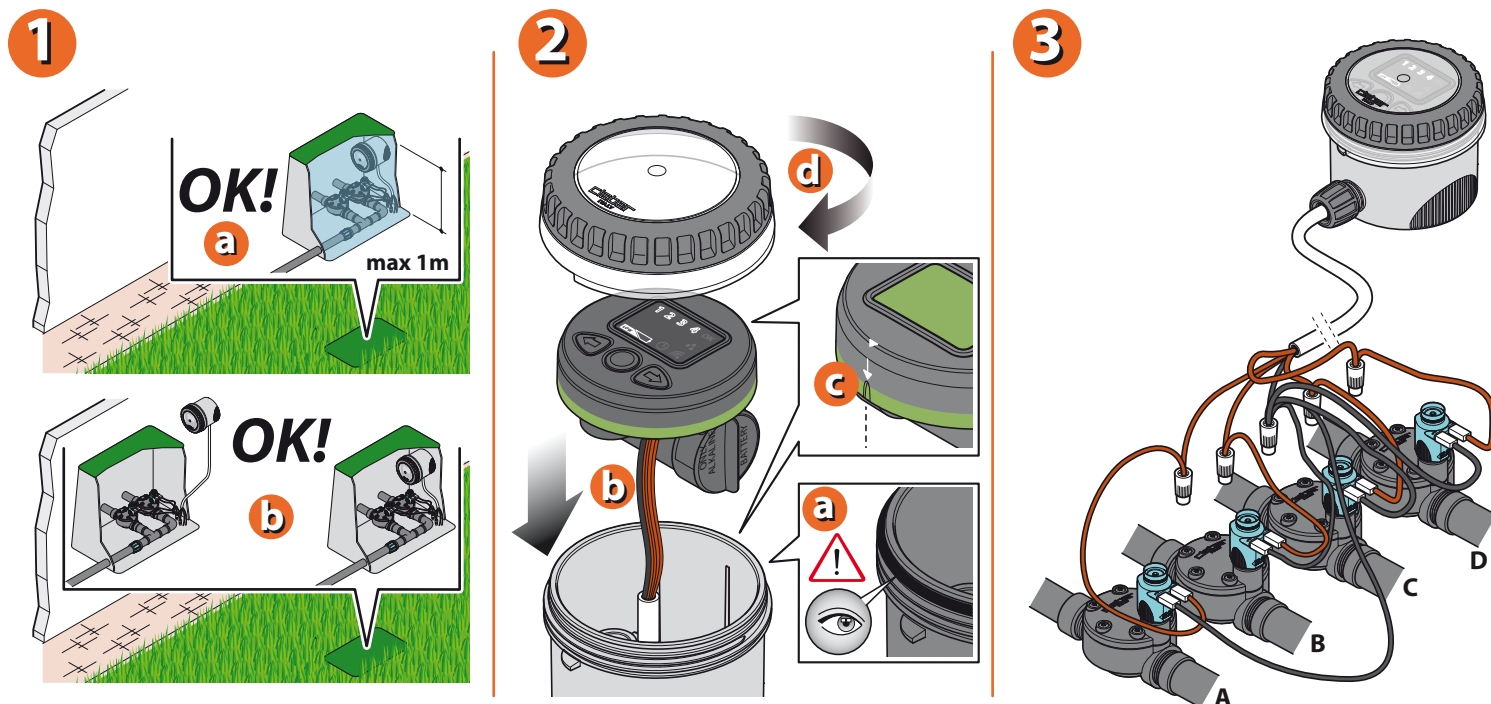
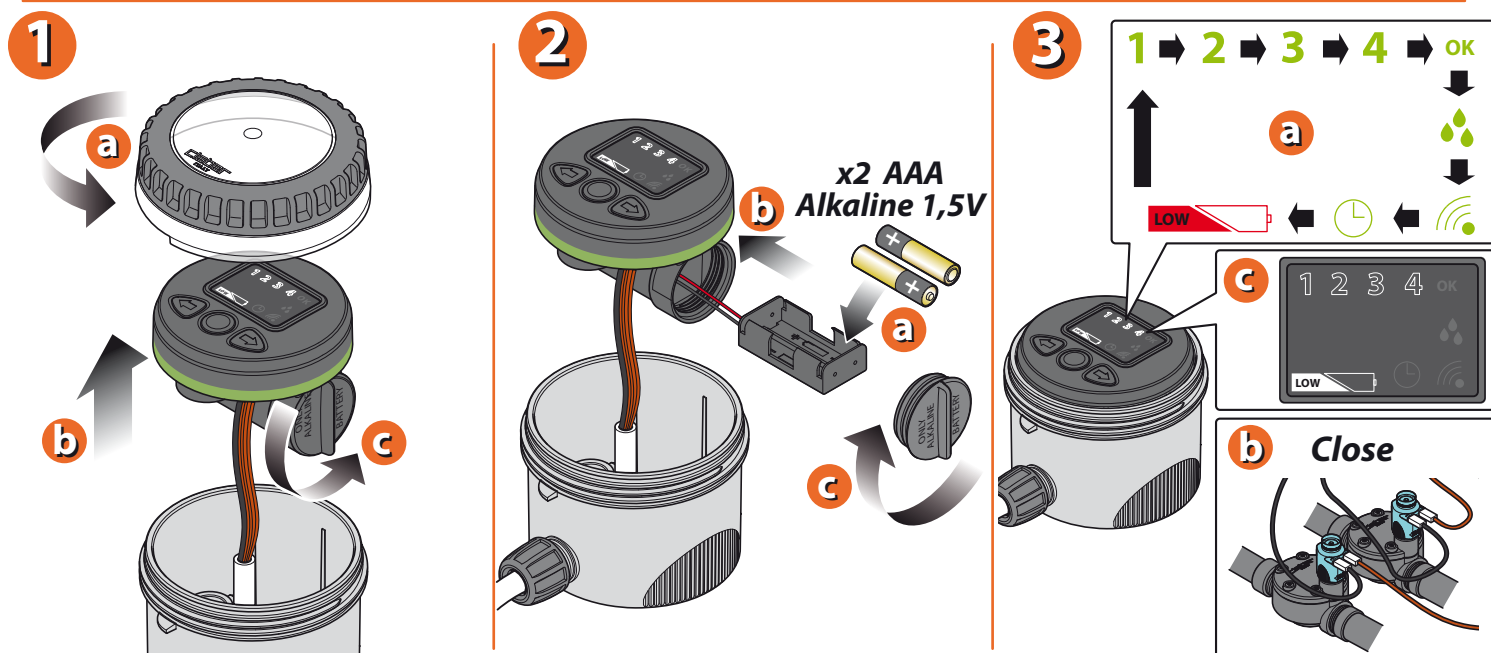


**INSTALLATION OF RF MODULE.** The RF module is fully watertight and will function even when installed permanently under water at a depth of up to one metre (ingress protection IP68). It can be located in the open air or in a cup underground, using the bracket provided. To ensure the control unit remains watertight, make certain that it is aligned with and fully inserted in its seat, and that the transparent cover is securely screwed on, with the seal properly positioned in its groove. The RF Module implements the selected watering cycles automatically by opening and closing a set of solenoid valves connected on the output side (maximum 4).




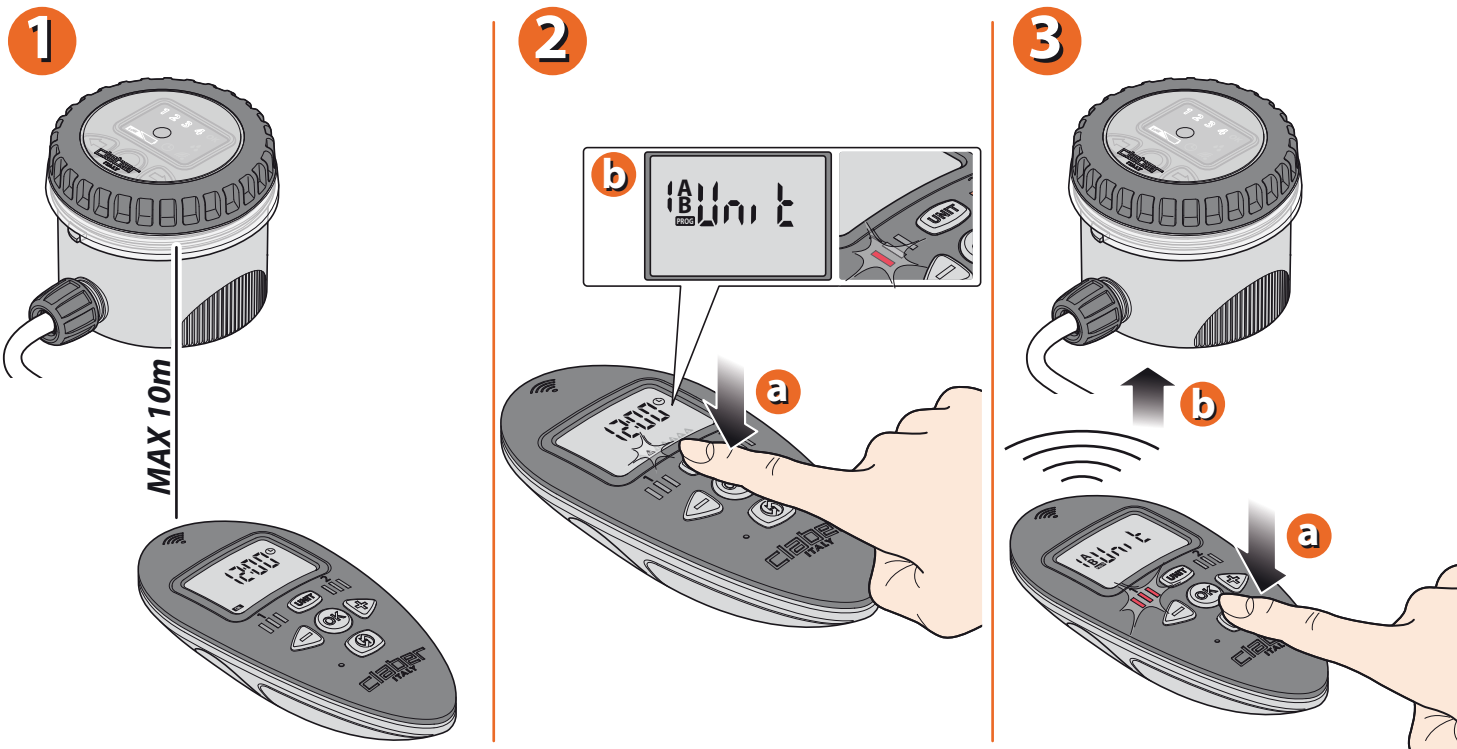
For Modulo RF (cod.): 90833

**RF UNIT. FITTING THE BATTERIES.** To fit new batteries or replace flat ones: Unscrew the transparent cover and remove the control unit. Unscrew the cap of the battery housing. Draw the battery holder out of the housing. Remove flat batteries, if in place, and fit the new batteries inside the holder, observing the correct polarity. Reposition the battery holder in the housing. Retighten the cap, checking that the seal is positioned correctly in its seat. Reposition the control unit as indicated and refit the transparent cover, checking that the seal is correctly seated in its groove. Use only 2 new 1.5V AAA alkaline batteries. Once the batteries are fitted, an initialization routine will take place (display Leds light up in sequence, valves close in sequence). Warning: 30 seconds after having fitted the batteries, or pressed any of the buttons, the Leds on the panel will go out. To refresh the display, press any button.




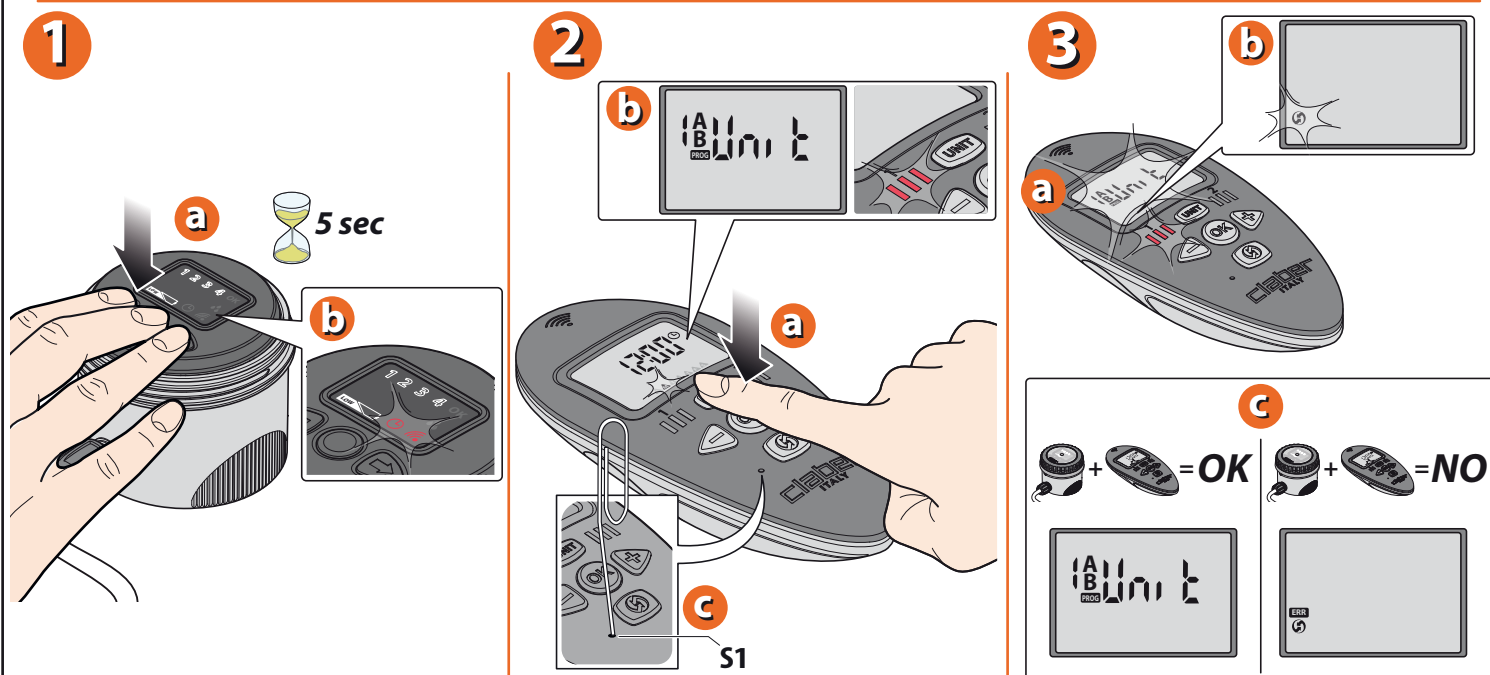
For Modulo RF (cod.): 90833

**Synchronization of time with the Telecontroller.** After replacing the batteries, proceed to synchronize the time with the Telecontroller: take up a position with the Telecontroller no more than 10 m from the RF Module, select the number of the RF Unit (Unit1 or Unit2) to be synchronized, using the **UNIT** button of the Telecontroller. Press the RF  button of the Telecontroller and wait for the operation to be completed.



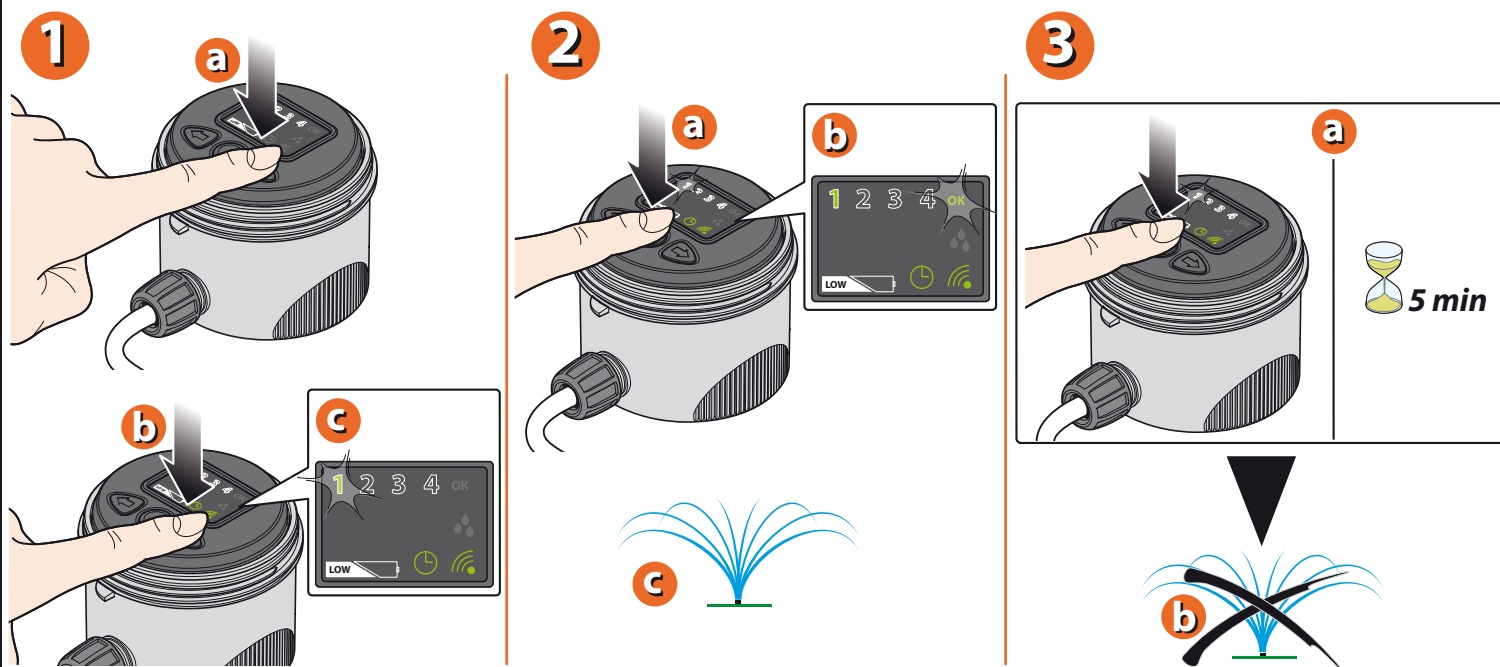
For Modulo RF (cod.): 90833

**Procedure for association of RF Module - Telecontroller.** Be sure to keep the components positioned NO MORE THAN a few metres from one another during the association procedure. Press the 3 buttons of the RF Module simultaneously and hold for at least 5 seconds, until the CLOCK ⌚ and RF  symbols turn red and start to blink (RF Module awaiting association with the Telecontroller). Press the **UNIT** button of the Telecontroller immediately to select the number of the RF Unit (Unit1 or Unit2) with which association is required. No later than one minute after the completion of step press the S1 button of the Telecontroller with the aid of a pointed object, such as a paper clip. This sets the association procedure in motion: the display of the Telecontroller will blink to indicate that the two components are attempting to establish wireless connection (radio frequency).



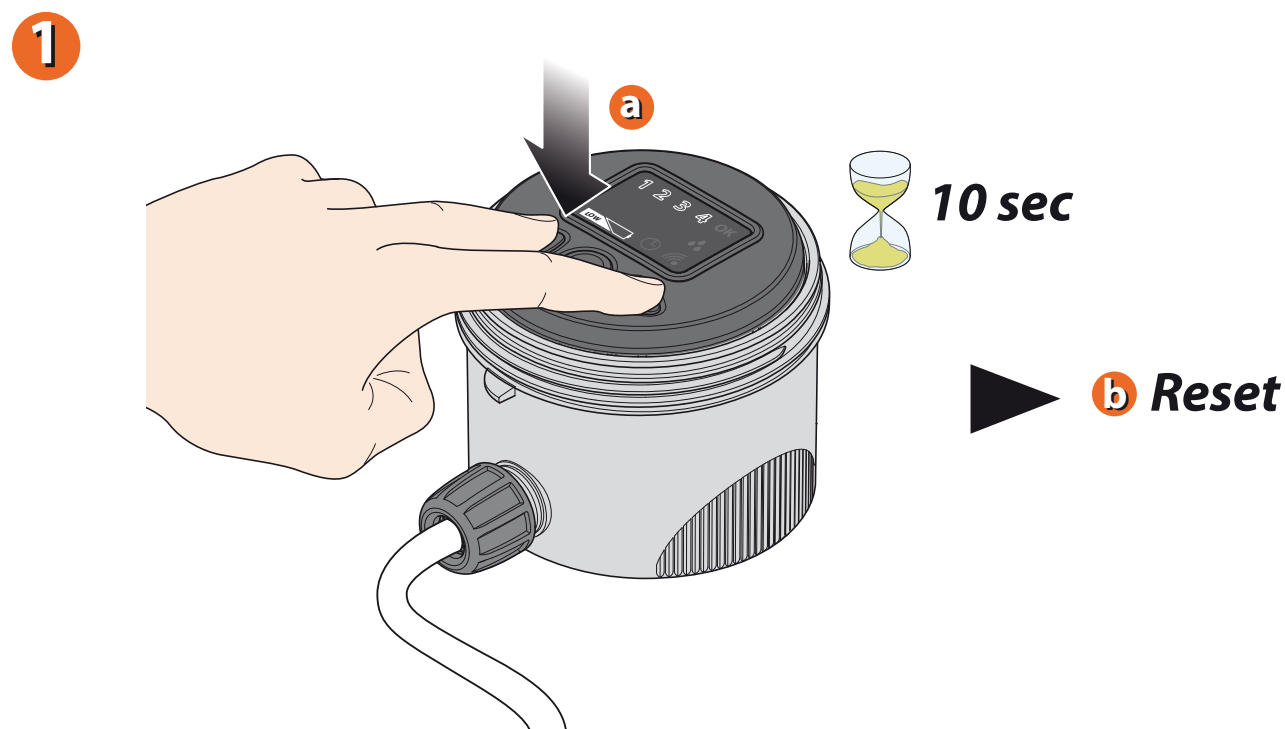
For Modulo RF (cod.): 90833

**Manual watering.** The user can open or close a solenoid valve manually, either locally, operating from the control panel of the RF Module, or remotely, from the Telecontroller. In the event that the panel of the RF Module is inactive, refresh the display by pressing any one of the panel buttons. Use the ◀ or ▶ buttons to select a solenoid valve (the blink of number 1, 2, 3 or 4 indicates the valve selected). Press the OK button to open the selected solenoid valve (when the valve is open, the OK symbol starts to blink and the corresponding number lights up, remaining permanently on). Press the OK button to close the open valve manually, or simply wait 5 minutes and the valve will be closed automatically by the timer function.



For Modulo RF (cod.): 90833

**RESET.** A RESET, which restores the factory settings for the product, has the effect of clearing all watering programs and the association with the RF Rain Sensor, whereas the association with the Telecontroller, if any, remains unaffected. To invoke the RESET, press the ◀ and ▶ buttons simultaneously and hold for 10 seconds, until the initialization cycle starts (display Leds light up in sequence, valves close in sequence).



For Modulo RF (cod.): 90833