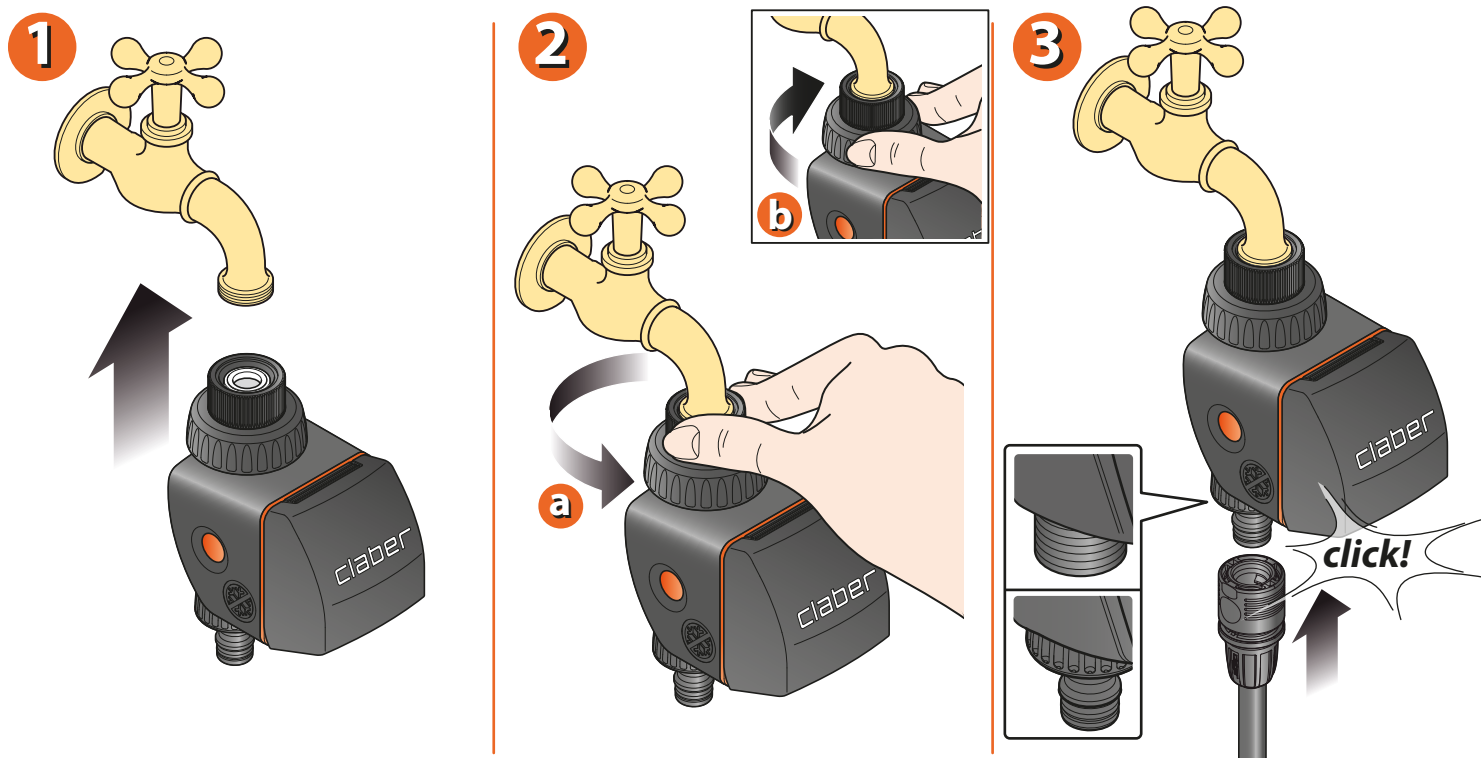
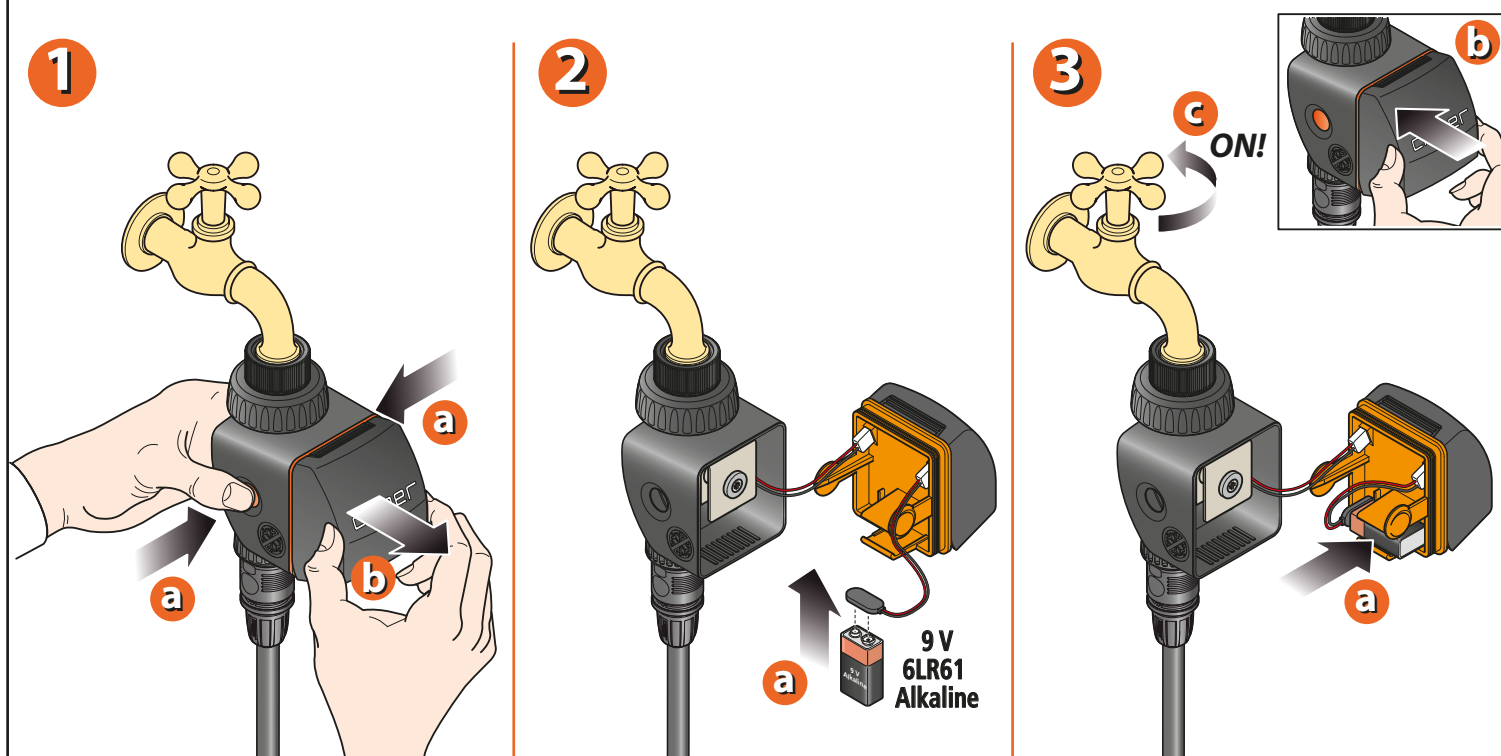


**INSTALLATION.** Attach the timer to a cold water tap, following these simple instructions.  
**Do not install the timer in a pit or valve box, below ground level or indoors.**  
**Do not use the timer with chemicals, or with any liquids other than water.**  
**Do not use the timer with water pressures lower than 0,2 bar (2,9 psi) or higher than 12 bar (174 psi).**



For Aquauno Select (p/n): 8423

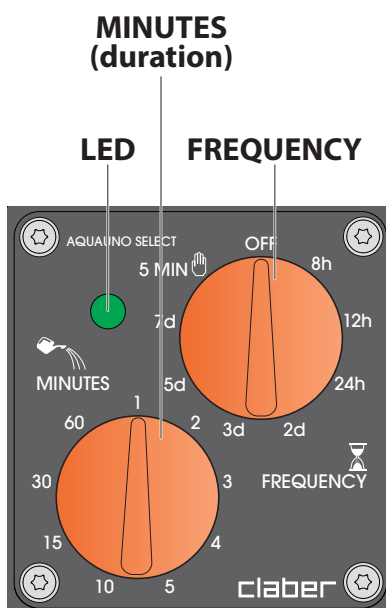
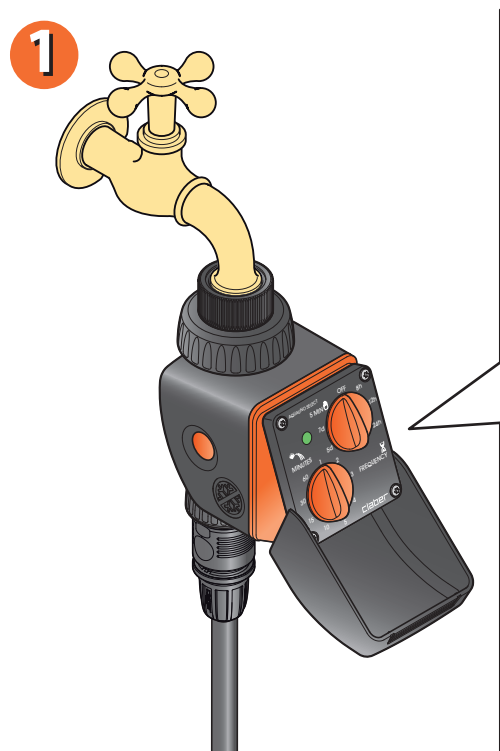
**FITTING THE BATTERY.** In order to function, the timer requires a single 9V Alkaline battery, type 6LR61, which must be replaced at the start of each watering season and will last for at least a full season.  
 To install or replace the battery, proceed as follows.



For Aquauno Select (p/n): 8423

**USE.** The timer will allow users to start and programme a watering cycle selecting the watering TIME (how much to water) and the frequency of watering (how often to water).

The selectable watering time and frequencies are factory set and cannot be changed.



Watering times (selector - MINUTES)	
how much to water	1-2-3-4-5-10-15-30-60 minutes
Frequency of watering (selector - FREQUENCY)	
how often to water	<div> OFF timer switched off - no watering </div> <div> 8h-12h-24h watering every 8-12-24 hours </div> <div> 2d-3d-5d-7d watering every 2-3-5-7 days </div> <div> 5 MIN (hand icon) manual watering </div>

For Aquauno Select (p/n): 8423

**USE.** The indicator LED on the timer provides important information:

1

LED - FAST blink (2 blinks per second)	➔ the timer is being programmed;
LED - SLOW blink (1 blink every 2 seconds)	➔ the timer is ready to start watering, or watering is in progress;
LED blinking at low brightness	➔ battery running low and should be replaced as soon as possible;
LED off	<div>➔ battery completely flat;</div> <div>➔ programming is not complete as only the "MINUTES" (duration) selector has been set: the timer will not perform any watering cycle automatically until programming has been completed;</div> <div>➔ the "FREQUENCY" selector is set at "OFF": the timer will not perform any watering cycle automatically until it is programmed again;</div> <div>➔ the "FREQUENCY" selector is set at "5 MIN (hand icon)" (manual) and the manual watering cycle has already finished: the timer will not perform any watering cycle automatically until it is programmed again.</div>

For Aquauno Select (p/n): 8423

**USE. Programming the timer.** Program the timer at the moment when watering is to start each day (for example, at 20:00 hours).

**1** - Set the WATERING TIME by turning the "minutes" selector to the appropriate preset time (for example, 10 minutes): the LED remains off to indicate that programming is incomplete (The timer will not perform any watering cycle automatically until programming has been completed).

**2** - Set the FREQUENCY by positioning the "FREQUENCY" selector (for example 12h): programming has now been completed the LED blinks fast for a few seconds, then SLOWLY (1 blink every 2 seconds).

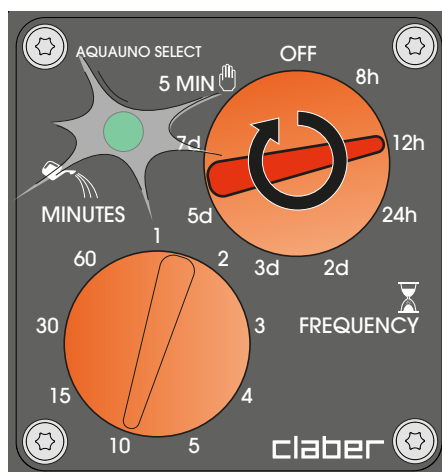
**3** - With programming complete, a watering cycle will start straight away.

**1**



(es.: 20:00 - 24 May)

**2**



(es.: 20:00 - 24 May)

**3**



**START**

(es.: 20:00 - 24 May)

For Aquauno Select (p/n): 8423

**USE. Programming the timer.**

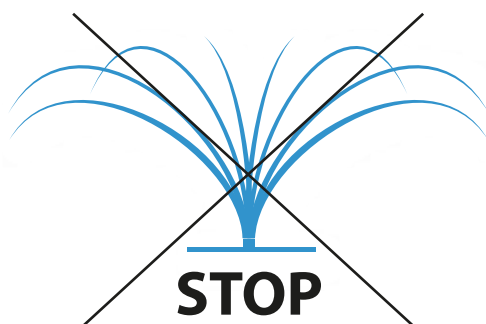
**1** - Watering will stop when the time set with the "minutes" selector has finished. (for example 10 minutes).

*When will subsequent watering cycles start?*

**2** - From the hour at which the timer has been programmed, or from the moment when a battery is fitted; subsequent watering cycles will start when the number of hours or days set with the "FREQUENCY" selector has elapsed (for example 12h).

When watering is in progress, and during the wait between one watering cycle and the next, the LED blinks SLOWLY (1 blink every 2 seconds) to indicate that the programmed cycles will be implemented correctly with the selected watering time and frequency.

**1**



**STOP**

(es.: 20:10 - 24 May)

**2**

**8:00 | 20:00**  
**Frequency: 12h**  
**Duration: 10 min**



**START**

(es.: 25 May onwards)

For Aquauno Select (p/n): 8423

**USE. Manual watering.** If an extra watering cycle is required during the wait between one programmed cycle and the next (at 19:00 hours, for example), a manual watering cycle of 5 minutes can be activated.

**1** - observe and remember the current position of the "FREQUENCY" selector, so that the previous settings of the timer can be restored at the end of the manual watering cycle.

**2** - Turn the "FREQUENCY" selector to the "5 MIN" position (there is no need to set the "minutes" selector as the duration of the manual watering cycle is factory set and cannot be changed).

**3** - A watering cycle of 5 minutes watering time will start immediately. It is not possible to extend the duration of a manual cycle (the time lapse of 5 minutes is factory set); the flow can however be terminated before the end of the five minutes by returning the "FREQUENCY" selector to its starting position (point 1).

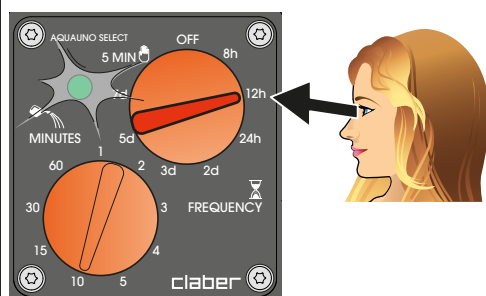
**1**

8:00 20:00

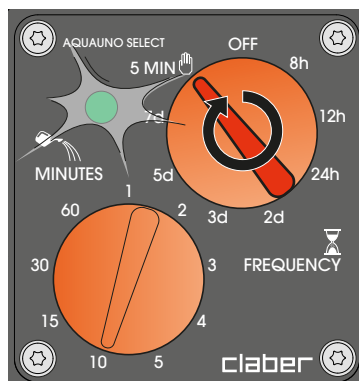

**START**

Duration: 10 min

Frequency: 12h



(es.: 19:00 - 13 August)

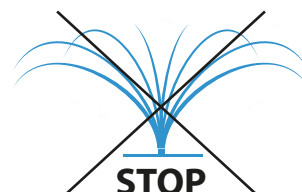
**2**


(es.: 19:00 - 13 August)

**3**

**START**

(es.: 19:00 - 13 August)


**STOP**

(es.: 19:05 - 13 August)

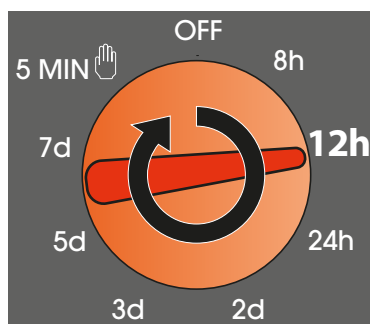
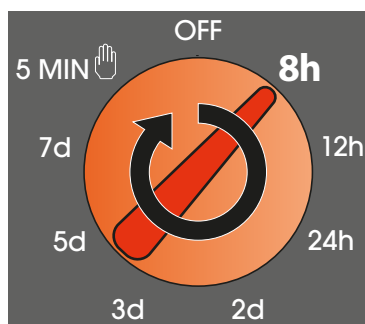
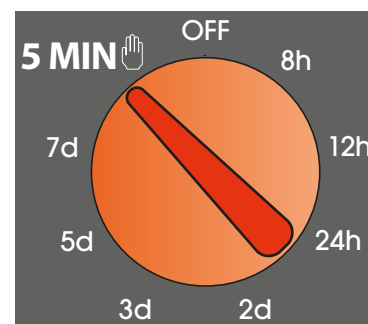
For Aquauno Select (p/n): 8423

**USE. Manual watering.** Once the cycle has been completed (or terminated early, if so desired) turn the "FREQUENCY" selector:

**4a - back to the previous position (point 1)**, the previous settings remain stored in the memory, and the watering cycles will continue to start up at the usual times. When turning the knob back to the previous frequency setting, do not pause for more than 3 seconds on any other frequency, as this will be interpreted as a new setting.

**4b - to a new frequency**, the previous setting will NOT remain stored in the memory: a watering cycle starts immediately, for the selected watering time, and subsequent cycles will then start following the number of hours or days programmed with the "FREQUENCY" selector.

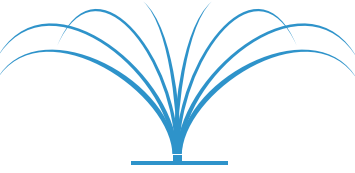


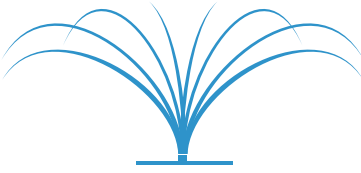
**4c - if the "FREQUENCY" selector remains in the "5 MIN" position**, the watering cycles programmed previously will not take place (status indicated by the LED, which stays dark).

**4a**

**4b**

**4c**


For Aquauno Select (p/n): 8423

### USE. Changing a watering programme. Changing the start time and/or the frequency of watering cycles.

- 1 - Wait for the new time at which watering is to start each day (for example 22:00).
- 2 - Position the "FREQUENCY" selector at "OFF" and wait for the LED to extinguish.
- 3 - Reposition the "FREQUENCY" selector on the new frequency required.
- 4 - After reprogramming, a watering cycle of the selected watering time starts immediately; subsequent cycles will then start following the number of hours or days set with the "FREQUENCY" selector.

<b>1</b>  <div style="background-color: red; color: white; padding: 5px; display: inline-block;">8:00</div> <div style="background-color: red; color: white; padding: 5px; display: inline-block;">20:00</div>   <b>START</b>  <div style="background-color: green; color: white; padding: 5px; display: inline-block;">Duration: 10 min</div> <div style="background-color: blue; color: white; padding: 5px; display: inline-block;">Frequency: 12h</div>  (es.: 13 August)	<b>2</b>    (es.: 22:00 13 August)	<b>3</b>    (es.: 22:00 13 August)	<b>4</b>  <div style="background-color: red; color: white; padding: 5px; display: inline-block;">6:00</div> <div style="background-color: red; color: white; padding: 5px; display: inline-block;">14:00</div> <div style="background-color: red; color: white; padding: 5px; display: inline-block;">22:00</div>   <b>START</b>  <div style="background-color: green; color: white; padding: 5px; display: inline-block;">Duration: 10 min</div> <div style="background-color: blue; color: white; padding: 5px; display: inline-block;">Frequency: 8h</div>  (es.: 14 August)
---	---	--	--

For Aquauno Select (p/n): 8423

### USE. Changing a watering programme. Changing the watering time of the cycle.

The watering time of the cycles can be changed during the cycle currently in progress or during the wait between one cycle and the next. During the wait between one cycle and the next, the user can:

- shorten or lengthen the selected watering time by repositioning the "minutes" selector: the change will take effect from the next cycle.

EXAMPLE: At 19:00 hours, I want to change the duration of a watering cycle programmed to start at 20:00, increasing it from 10 to 15 minutes.

<b>1</b>  <div style="background-color: black; color: white; padding: 5px; display: inline-block;">8:00</div> <div style="background-color: black; color: white; padding: 5px; display: inline-block;">20:00</div> <div style="background-color: blue; color: white; padding: 5px; display: inline-block;">Frequency: 12h</div> <div style="background-color: red; color: white; padding: 5px; display: inline-block;">Duration: 10 min</div>  (es.: 19:00)	<b>2</b>    (es.: 19:00)	<b>3</b>  <div style="background-color: black; color: white; padding: 5px; display: inline-block;">8:00</div> <div style="background-color: black; color: white; padding: 5px; display: inline-block;">20:00</div> <div style="background-color: blue; color: white; padding: 5px; display: inline-block;">Frequency: 12h</div> <div style="background-color: red; color: white; padding: 5px; display: inline-block;">Duration: 10 min</div>   <b>START</b>  (es.: 20:00 -> 20:15)
---	--	---

For Aquauno Select (p/n): 8423

**USE. Changing a watering programme. Changing the watering time of the cycle.**

The watering time of the cycles can be changed during the cycle currently in progress or during the wait between one cycle and the next. During the cycle currently in progress, the user can:

- shorten the selected watering time by repositioning the "minutes" selector: the watering cycle currently in progress will stop once the newly set time has elapsed or, if already completed, will stop when the "minutes" selector is repositioned.

**EXAMPLE:** At 20:00 hours, I want to change the duration of a watering cycle that has been in progress for 3 minutes, shortening it from 10 to 5 minutes.

**1**

(es.: 20:00 - 24 May)

**2**

(es.: 20:03 - 24 May)

**3****Frequency: 12h****Duration: 5 min**

The watering cycle stops  
5 minutes after the start.

(es.: 20:00 -&gt; 20:05 - 24 May)

For Aquauno Select (p/n): 8423

**USE. Changing a watering programme. Changing the watering time of the cycle.**

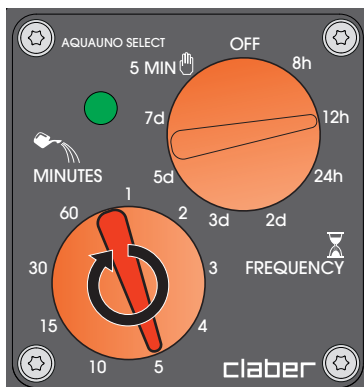
The watering time of the cycles can be changed during the cycle currently in progress or during the wait between one cycle and the next. During the cycle currently in progress, the user can:

- lengthen the watering time by repositioning the "minutes" selector: the change will take effect immediately.

**EXAMPLE:** At 20:00 hours, I want to change the duration of a watering cycle that has been in progress for 7 minutes, shortening it from 10 to 5 minutes.

**1**

(es.: 20:00 - 24 May)

**2**

(es.: 20:07 - 24 May)

**3****Frequency: 12h****Duration: 7 min**

The watering cycle stops when the  
selector is repositioned. The next  
watering cycle will last 5 minutes.

(es.: 20:00 -&gt; 20:05 - 24 May)

For Aquauno Select (p/n): 8423

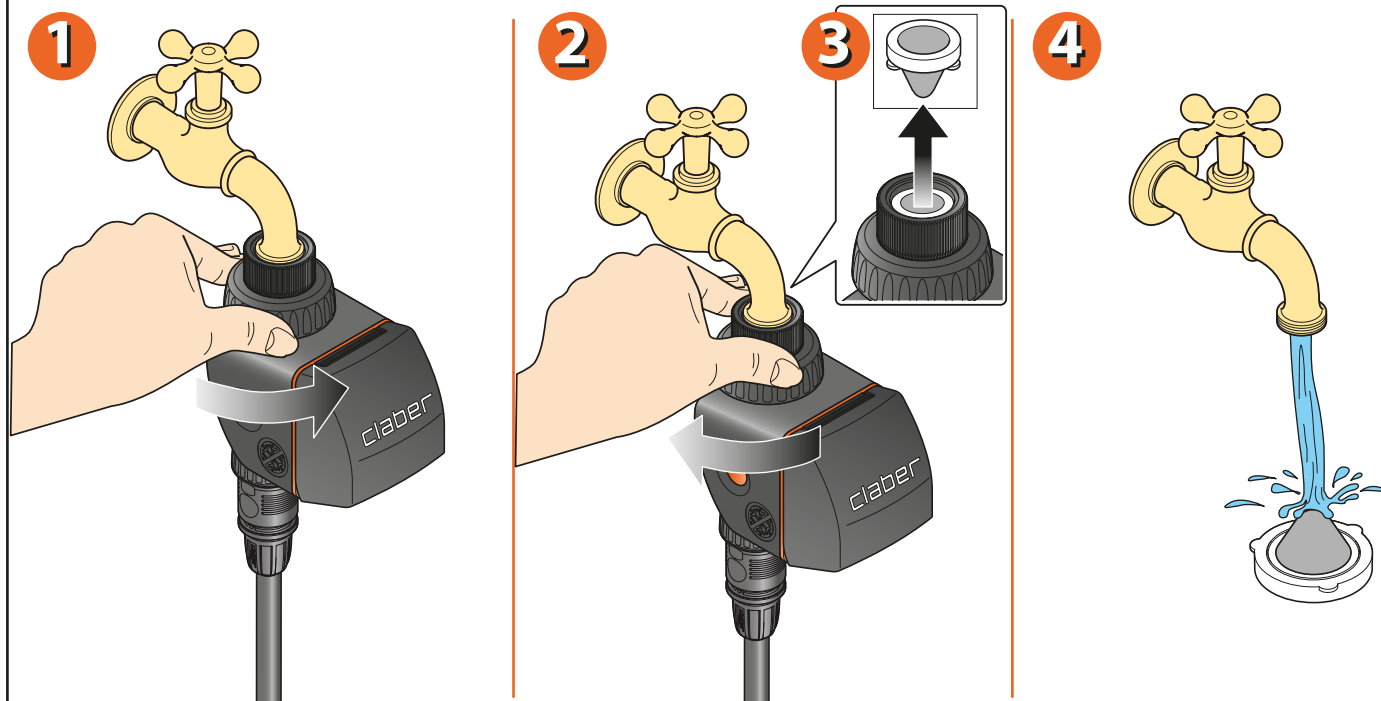
**CLEANING AND MAINTENANCE.** Wash the filter at the start of every season and inspect periodically.

**1** - Turn off the water tap and loosen the screw collar, turning anticlockwise.

**2** - Loosen the 3/4" screw collar of the tap connector, turning clockwise.

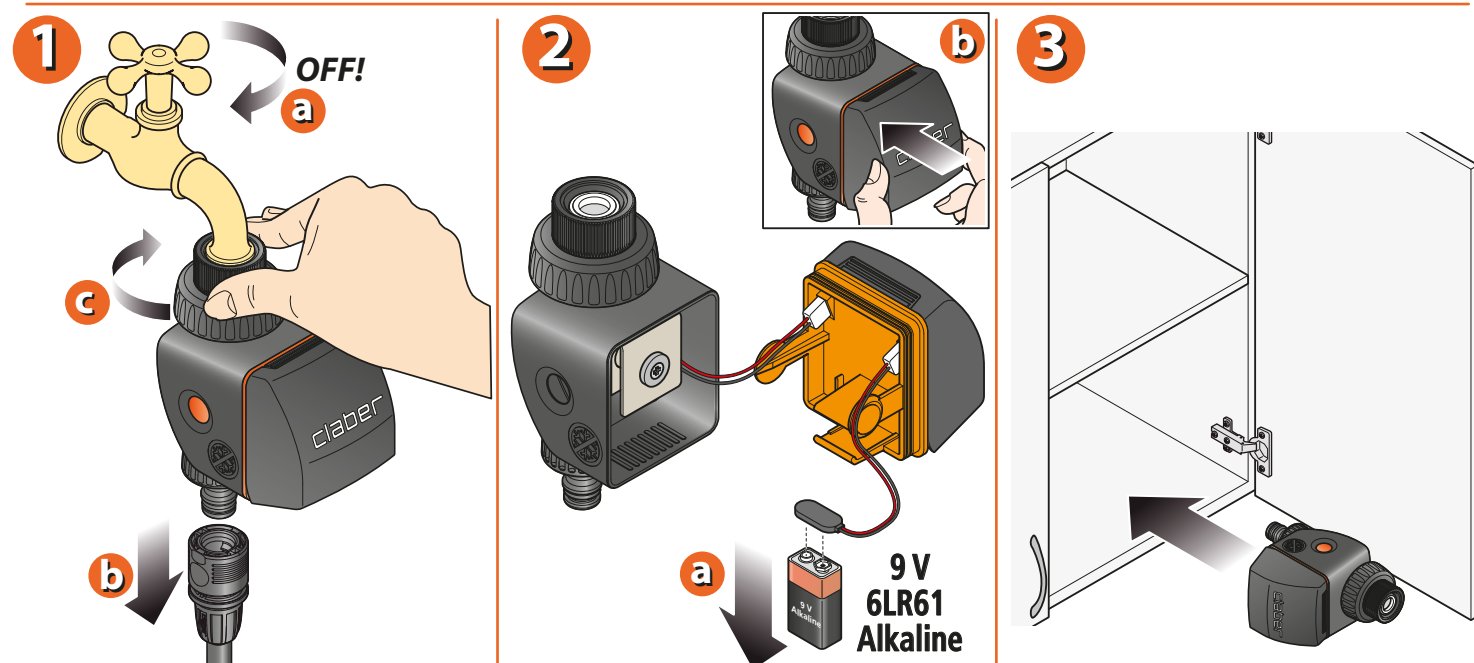
**3** - Remove the filter.

**4** - Rinse the filter clean under running water. After washing, reassemble all parts as before.



For Aquauno Select (p/n): 8423

**CLEANING AND MAINTENANCE.** During winter, and/or when the timer is not in use, always remove the battery and store in a dry place at a temperature no lower than 3 °C.



For Aquauno Select (p/n): 8423

For more information and further details, please consult the instruction manual supplied with the product.