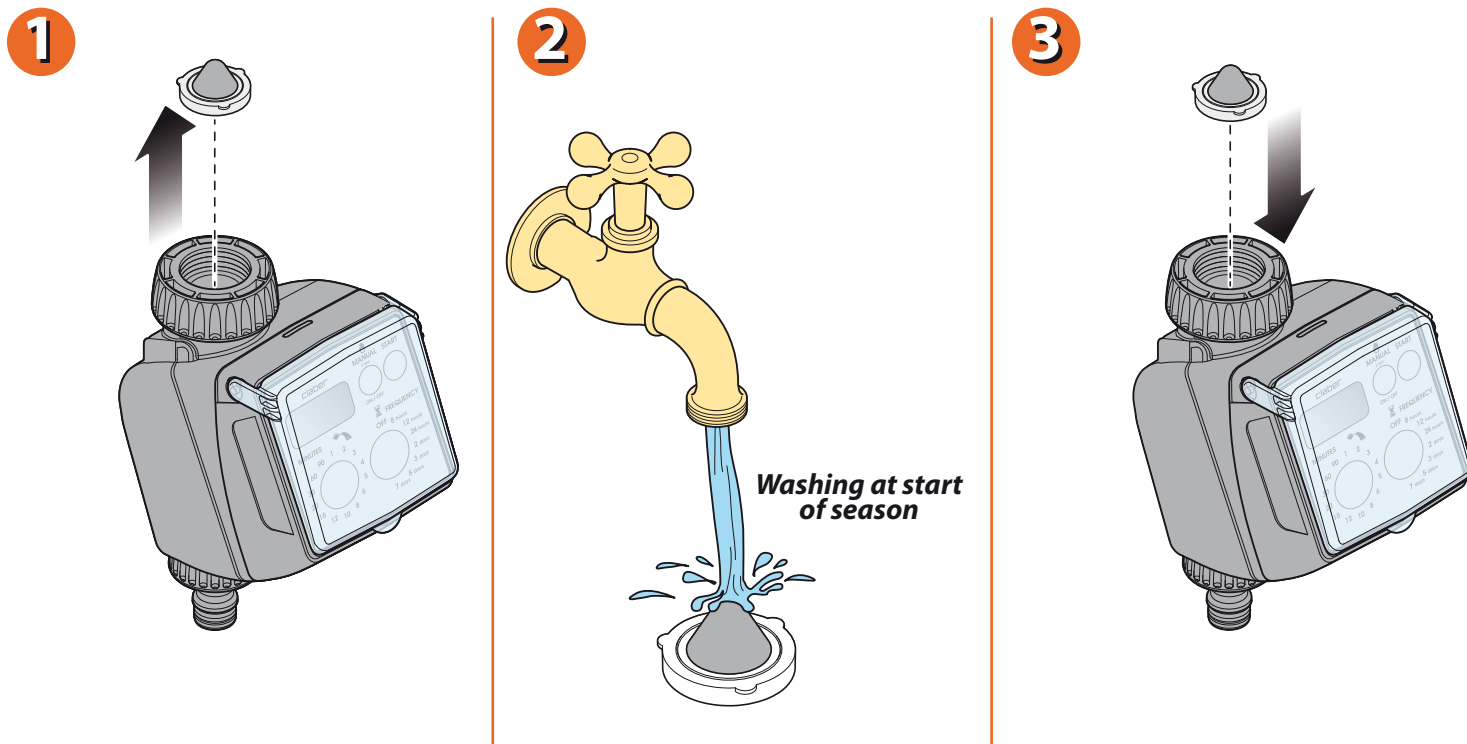
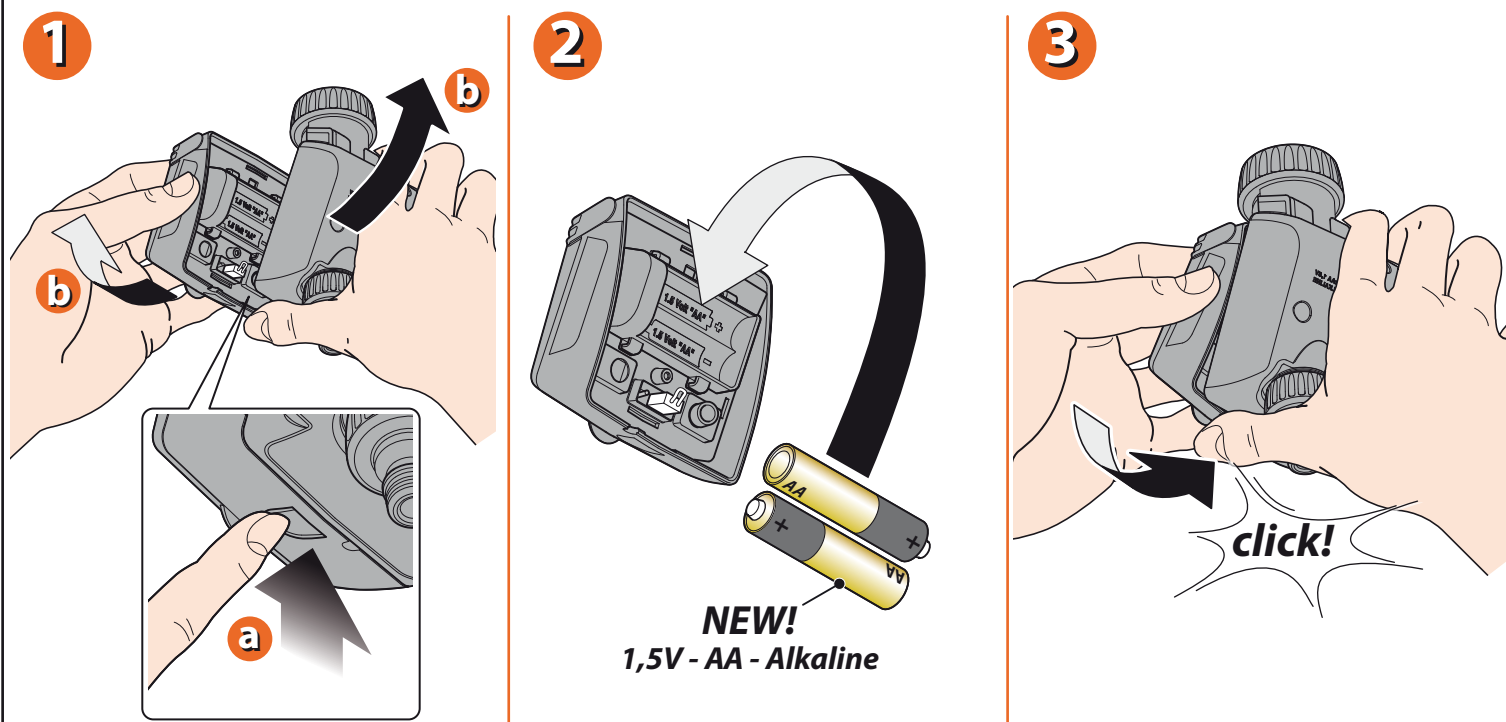


**CLEANING THE FILTER.** The timer is protected by a wire mesh filter that ensures long-lasting and trouble-free operation. The filter should be inspected periodically and washed at the beginning of every season. Simply remove the filter from the connector and rinse clean under running water.



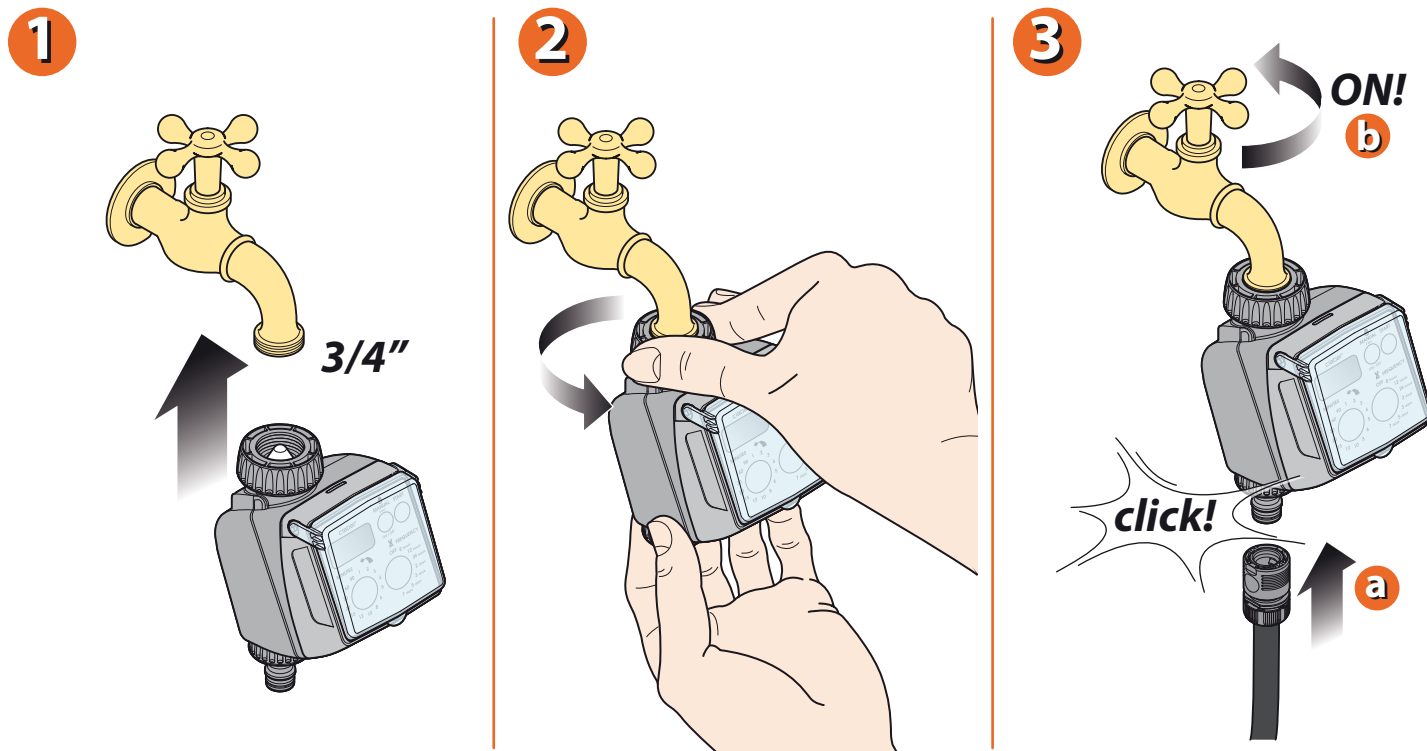
For Tempo Select (cod.): 8486

**FITTING/REPLACING THE BATTERIES.** To fit or replace the batteries, press the locking tab fully in to release the front part of the timer, which can then be detached. Fit 2 new batteries in the holder, observing the correct polarity. As long as the batteries are replaced within 2 minutes, the current settings will remain stored. Refit the front part of the timer to the back and press, ensuring that the locking tab clicks into place. Important: always replace the batteries at the beginning of each season!



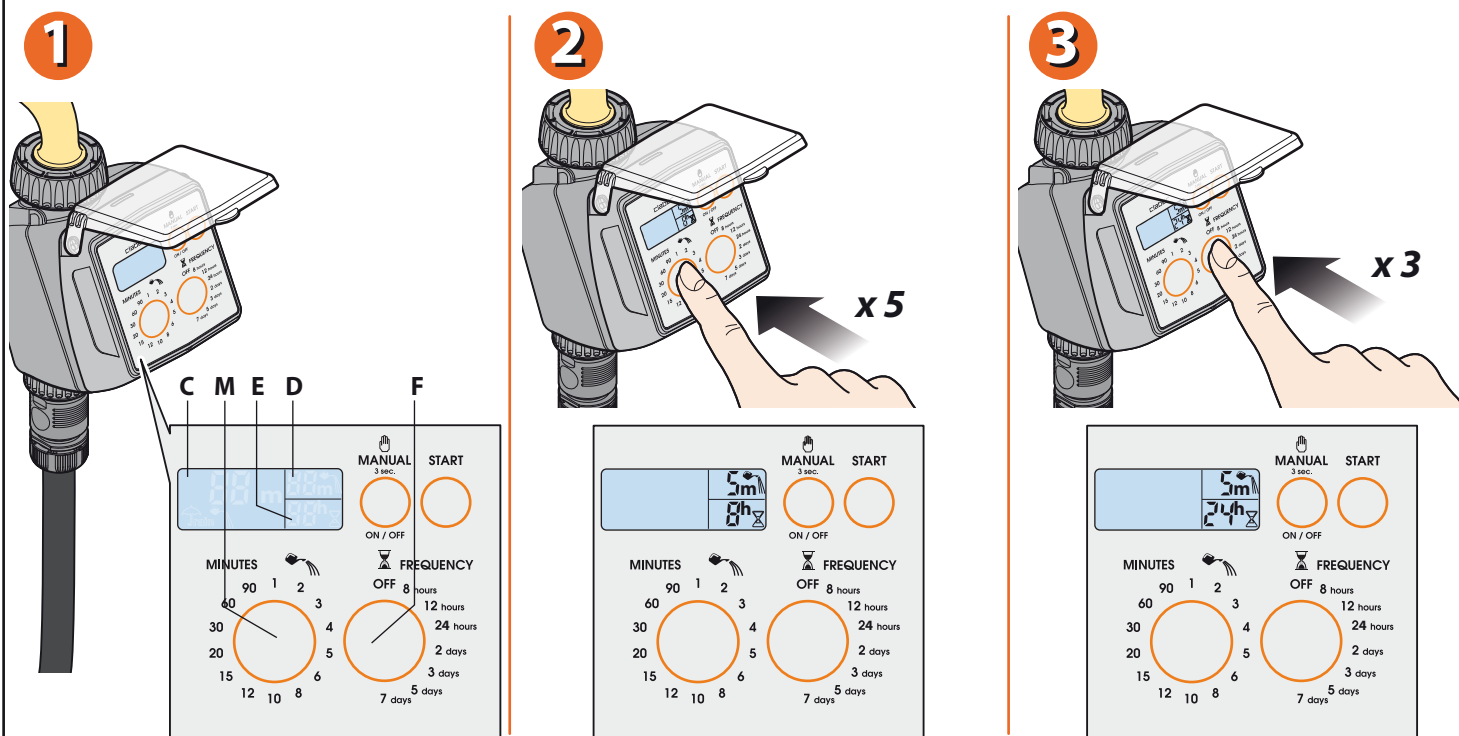
For Tempo Select (cod.): 8486

**INSTALLATION.** Fit the timer to a cold water tap, following these simple instructions. The spout of the tap should have a 3/4" male thread (if not, use an adapter). Screw the clamp collar of the 3/4" female fitting onto the tap. Caution: tighten the collar using hand pressure only. Do not use wrenches or other tools. Connect the watering line to the quick-click or threaded fitting, using the appropriate connector. Remember to turn on the water tap!





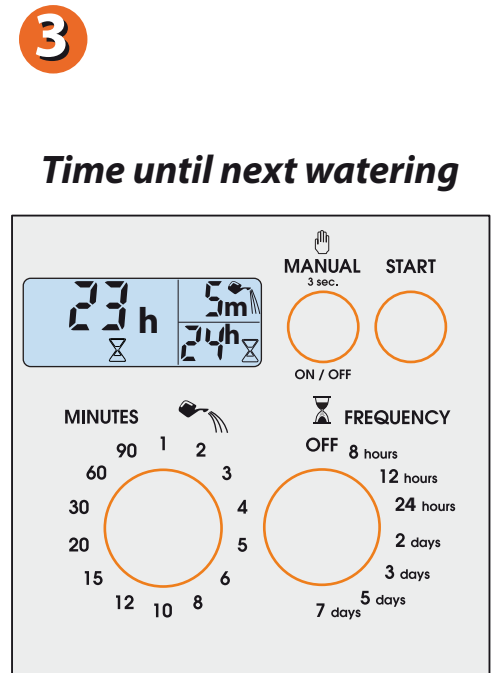
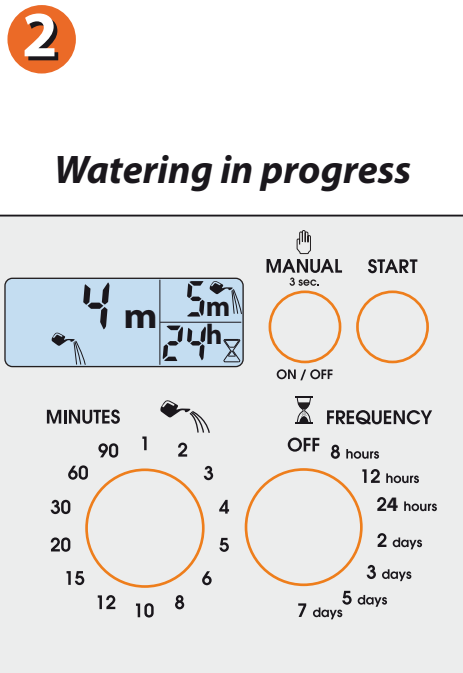
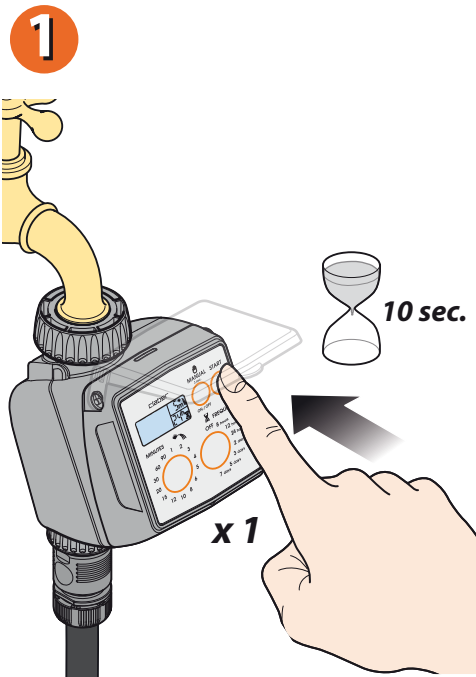
For Tempo Select (cod.): 8486

**SELECTION OF WATERING PROGRAMME.** Press any button once to light up the display. Press the "M" button once or repeatedly (e.g. 5 times) until the required value is displayed in field "D" (e.g. 5 min). Set the watering frequency (interval of time between successive watering cycles) by pressing the "F" button repeatedly until the required value is displayed in field "E" (e.g. 24h). The selectable intervals are: every 8, 12 or 24 hours, or every 2, 3, 4, 5 or 7 days.




For Tempo Select (cod.): 8486

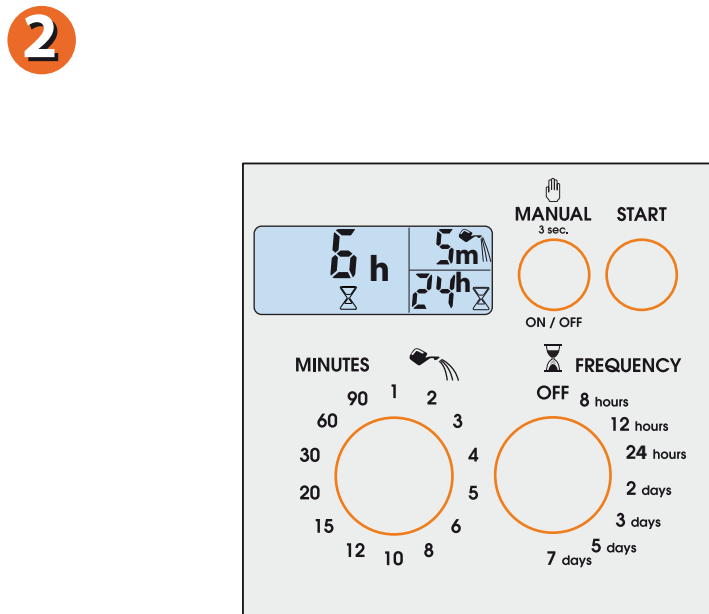
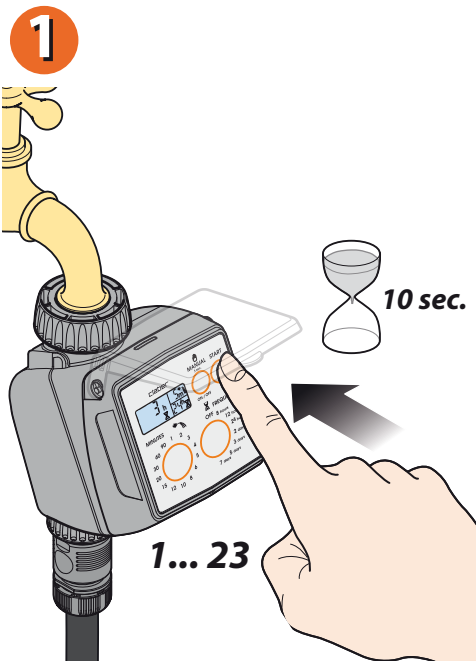
**Immediate start.** Within 10 seconds of selecting the programme, press the "START" button once only. Releasing the button, the message "0 h" blinks 3 times in the display, and the automatic watering cycle will start immediately. The  symbol appears in display field "C" indicating that watering is in progress, together with the time remaining until the end of the cycle. At the end of the watering cycle, display field "C" shows the  symbol together with time remaining until the start of the next watering cycle.




For Tempo Select (cod.): 8486

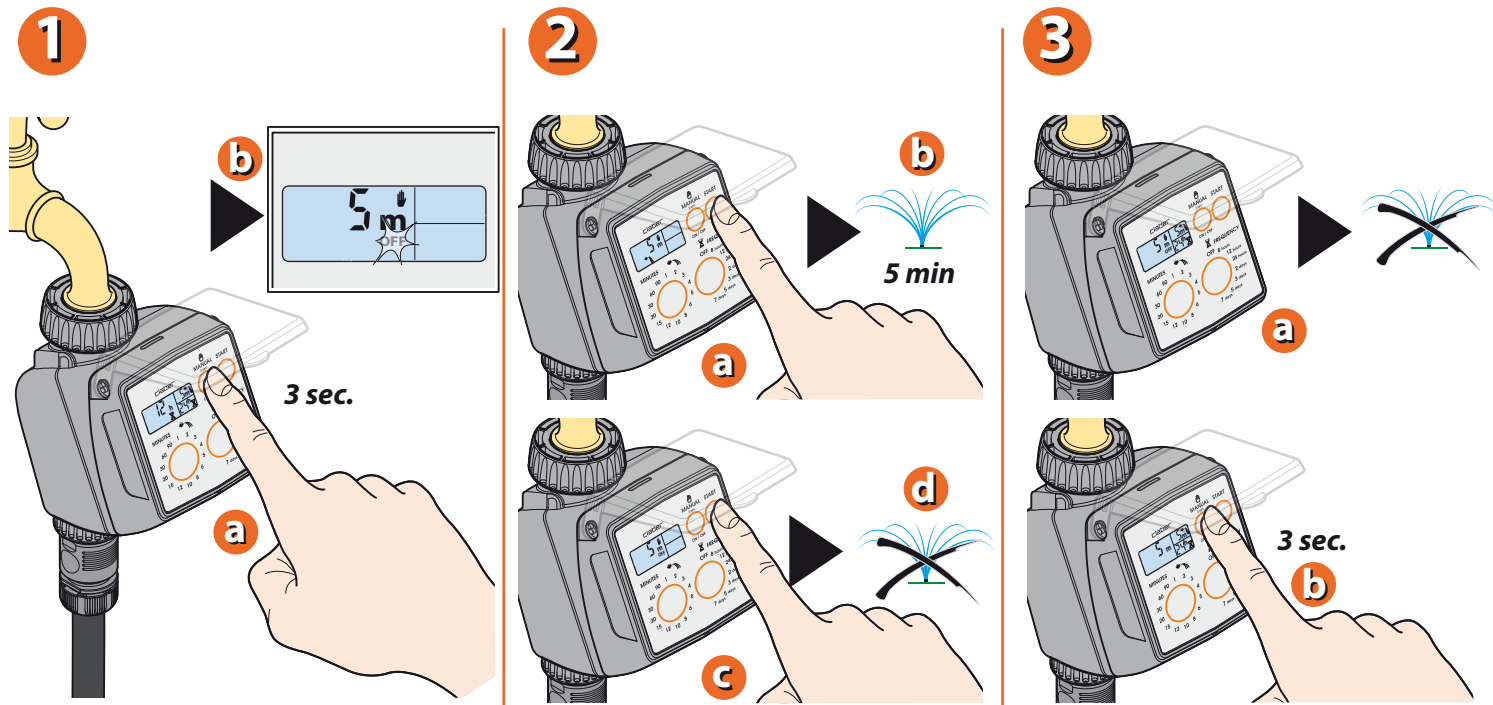
**Delayed start.** Within 10 seconds of selecting the programme, press the "START" button repeatedly until display field "C" shows the delay, between 1 and 23 hours, before the start of the automatic watering cycle (e.g. 6 hours). Release the button, and the number of hours will blink 3 times, after which the programme begins the countdown to the automatic start of the watering cycle, shown in display field "C" above the  symbol.

**Making changes to the watering programme.** Repeat the programming procedure as indicated in the "selection of watering programme" section (e.g. changing 5 to 10). The new programme will replace the previous one.



For Tempo Select (cod.): 8486

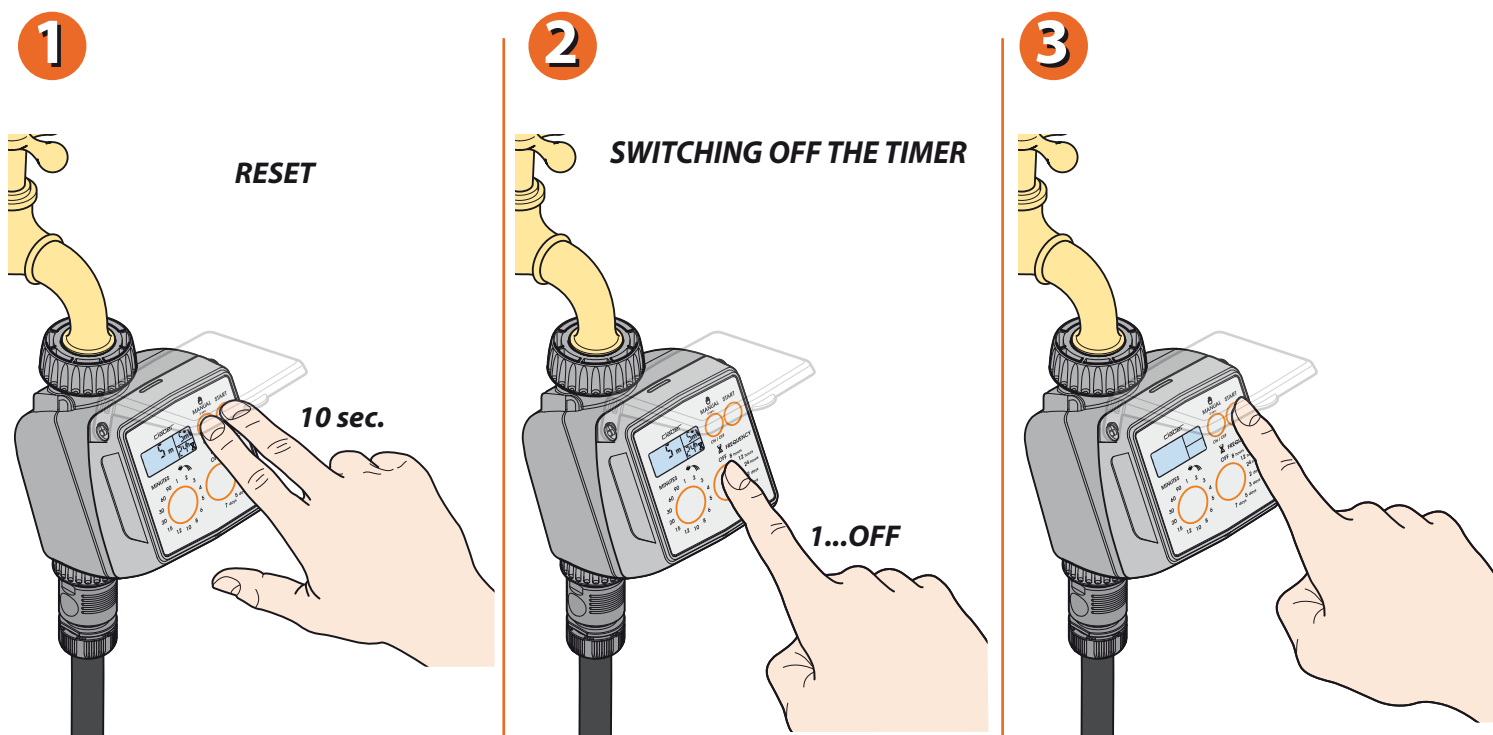
**MANUAL WATERING.** Press the "MANUAL" button and hold it for at least 3 seconds; the unit goes into manual mode with the valve off (OFF blinking). Pressing the "START" button, the line will be activated for 5 minutes (which cannot be changed by the user), confirmed by the  symbol. To stop watering before 5 minutes have elapsed, press the "START" button a second time. To quit the manual function, make certain that the valve is OFF, then press the "MANUAL" button and hold it for at least three seconds.



For Tempo Select (cod.): 8486

**RESET.** The factory settings of the timer can be restored at any given moment by pressing the MANUAL and START buttons simultaneously and holding them for at least 10 seconds.

**SWITCHING OFF THE TIMER.** If the timer needs to be switched off, for example to store it away during winter, press the "F" button once, or repeatedly until the "OFF" symbol appears, then press the "START" button.

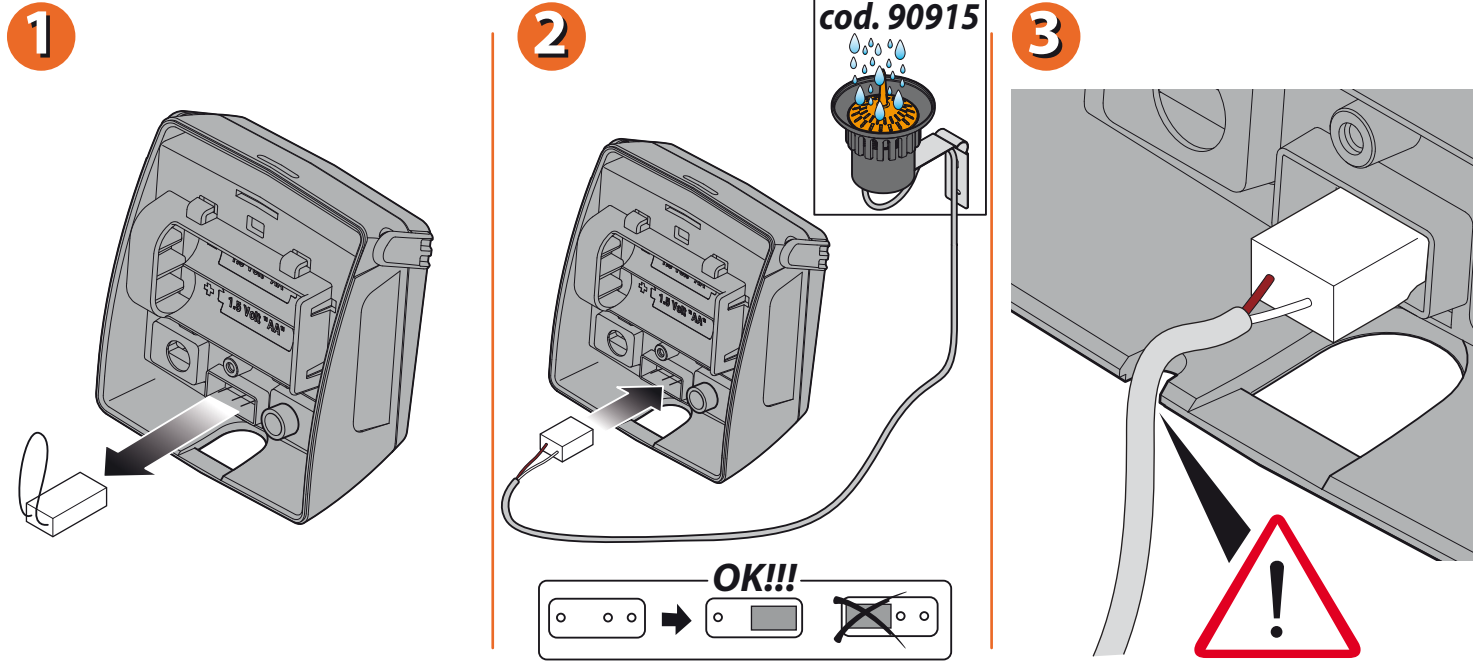


For Tempo Select (cod.): 8486

**Rain sensor.** The timer can be connected to a Rain Sensor, by wire or by radio. When the level of water in the Rain Sensor rises above 5 mm, the watering program will be suspended automatically, then resumed once the rainwater in the cup has evaporated.

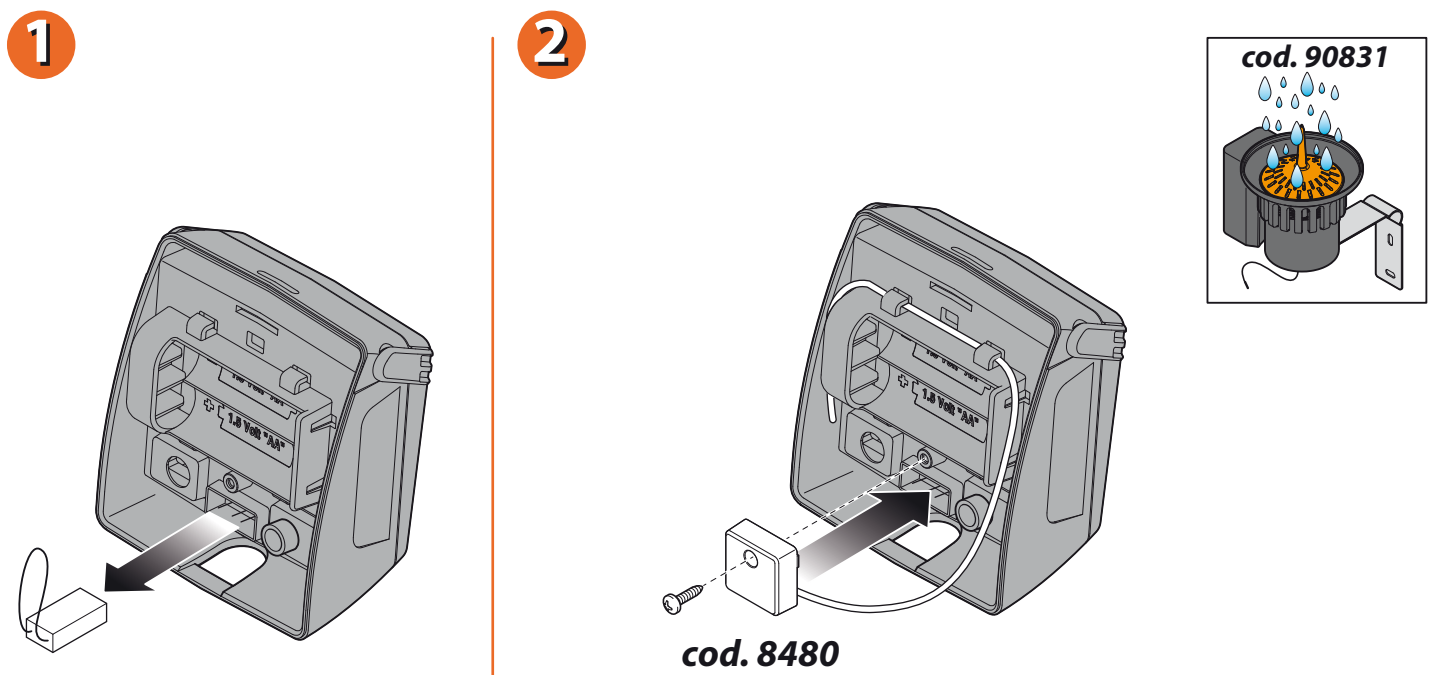
**Installation.** Remove the protective jumper from the rain sensor contacts (no tools are needed). If the Rain Sensor is not going to be used, the jumper must remain in place across the contacts.

**Wired Rain Sensor.** Fit the connector of the sensor lead. Check that the two-core cable enters the timer by way of the slot provided in the rear of the housing.



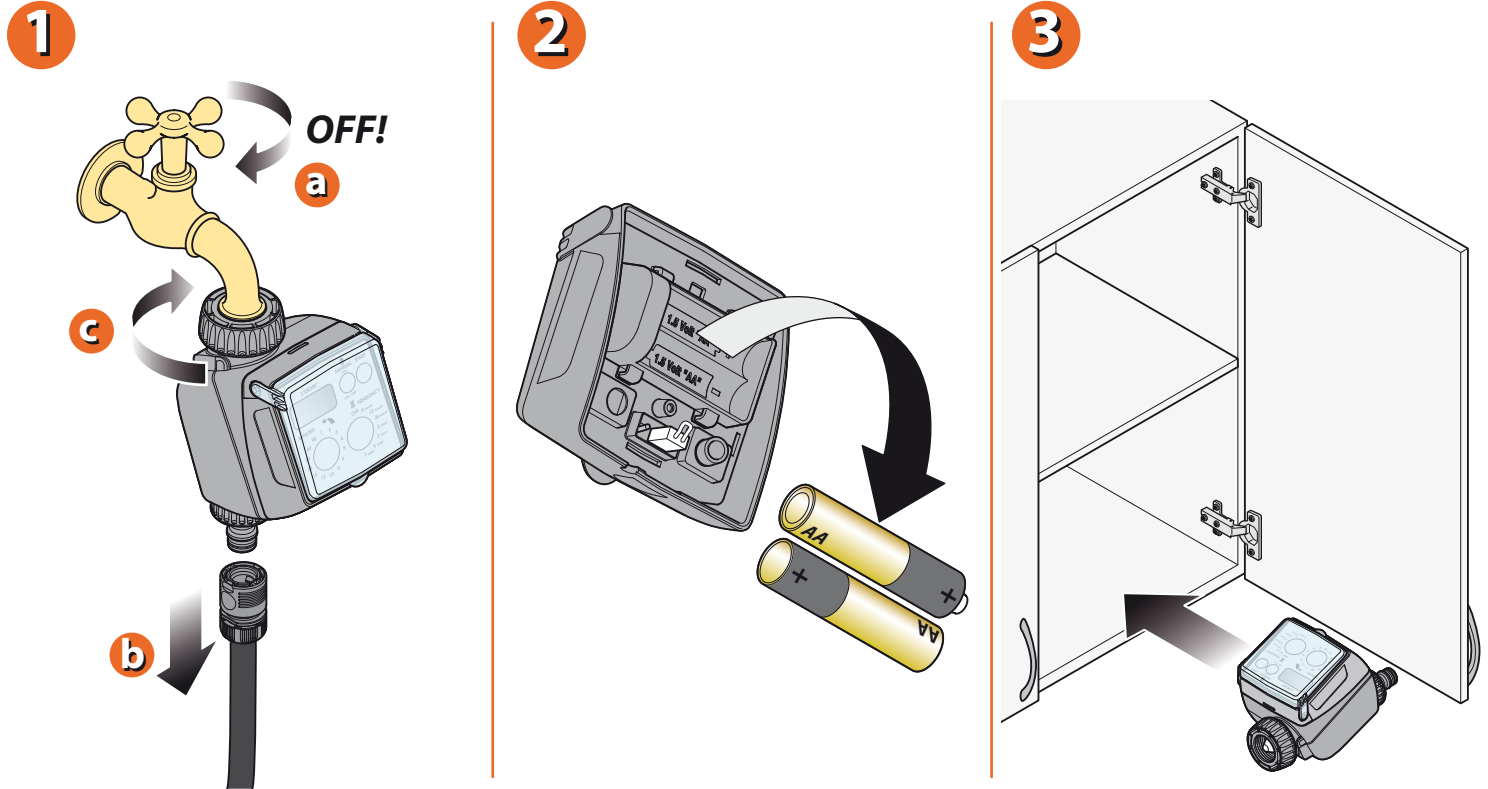
For Tempo Select (cod.): 8486

**RF Rain Sensor.** Install the RF Rain Sensor Interface, routing the wire antenna through the relative clips.



For Tempo Select (cod.): 8486

**PROTECTION IN WINTER.** At the end of the watering season and before winter, disconnect the timer from the tap, remove the batteries and store the device indoors, protected from frost and damp. This will ensure that the timer remains as good as new for many springs and summers to come!



For Tempo Select (cod.): 8486

For more information and further details, please consult the instruction manual supplied with the product.